



LARDEN ROAD  
W3

£500,000 Offers In Excess Of

Acton





# LARDEN ROAD, W3

## £500,000 OIEO



Open plan  
Reception Room



Modern Kitchen



Two Double  
Bedrooms



One Bathroom



On Street

A well-presented ground floor period maisonette situated on the Chiswick borders. Boasting two large double bedrooms, an open plan reception room with a modern kitchen, family bathroom and access to a secluded 44ft private garden. This fantastic property further benefits from a front garden, share of freehold and over 650sq ft of living space.

Larden Road is located in a sought after residential area, moments from the popular Wendell Park. Ideally situated for the many independent shops, restaurants and cafes on Askew Road, and within easy reach to a wider range of amenities on both Chiswick High Road and Uxbridge Road. Local transport links include Turnham Green (District & Piccadilly) and Acton Central (Overground) stations.

EPC RATING: C

LOCAL AUTHORITY: London Borough of Hammersmith & Fulham

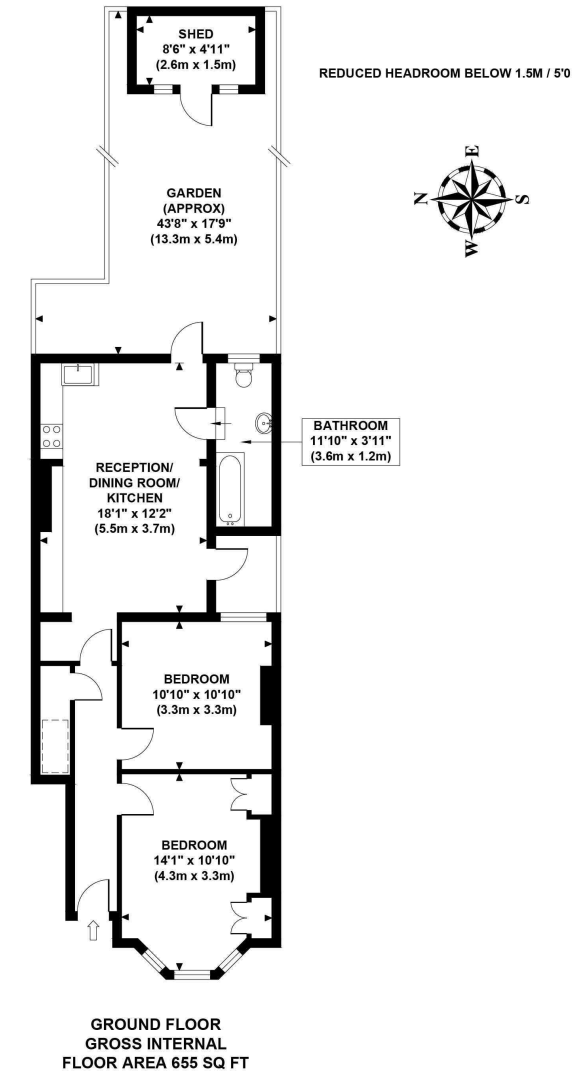
COUNCIL TAX BAND: D

TENURE: Share of Freehold

You may wish to instruct us about a related service, including: the sale and letting of residential and commercial property, the provision of mortgage and financial services, conveyancing and property management. Where you choose to use other services, Northfields or its employees may receive a fee or commission which will be disclosed to you.

## LARDEN ROAD

Approximate Gross Internal Area  
655 sq ft / 60.90 sq m  
(Excluding Shed)



Although every attempt has been made to ensure accuracy, all measurements are approximate and no responsibility is taken for any error, omission, or mid-statement. This floor plan is for illustrative purposes only and not to scale. Measured in accordance to RICS standards.  
GB PRO PHOTOS



## Your local independent award winning estate agents



### Shepherds Bush

127 Askew Road,  
Shepherds Bush W12 9AU  
Sales: 020 8740 8833  
E: sbsales@northfields.co.uk

020 8740 8833

[www.northfields.co.uk](http://www.northfields.co.uk)

**CONTACT**

*Us today*

TO FIND OUT

**MORE**