



# PLOT 30 - THE HEBDEN

## FOUR BEDROOM DETACHED HOME

This superb four bedroom home comprises four double bedrooms to the first floor with two ensembles and a dressing area to the master bedroom. The ground floor features a stunning

high specification kitchen-dining room with bi-fold doors opening onto the garden, a handy utility room and a downstairs WC. There's also a large separate living room and an integral garage.

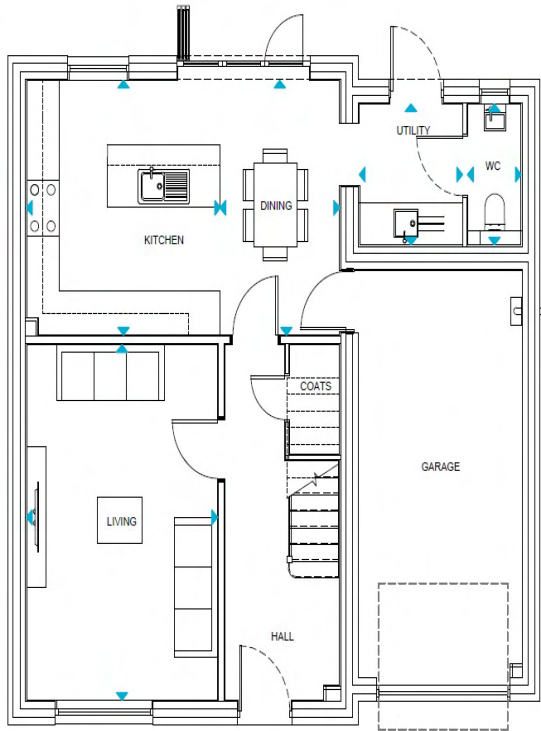
### KEY FEATURES

- Bi-folding doors
- Front and rear turfed garden
- Remote operated garage door
- Designer kitchen
- Integrated appliances
- Open-plan kitchen-dining room
- Spacious separate living room
- Two ensembles and house bathroom
- Handy utility & WC
- Four double bedrooms
- Dressing area
- Private drive



**WHARFEDALE**  
HOMES

07388 388147 or 01423 799690  
sales@wharfedalehomes.co.uk | www.wharfedalehomes.co.uk

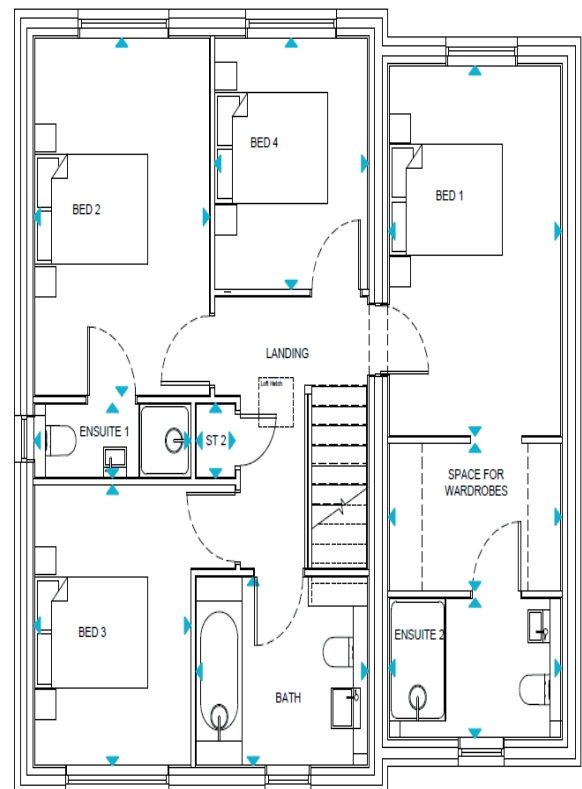


## GROUND FLOOR

Living	5080 X 3085 mm
Kitchen	3637 X 3598 mm
Dining	3638 X 2215 mm
Utility	2010 X 2910 mm

## FIRST FLOOR

Bedroom 1	4545 X 3050 mm
Dressing area	1813 X 3050 mm
Ensuite 1	1735 X 3050 mm
Bedroom 2	4394 X 3085 mm
Ensuite 2	925 X 2722 mm
Bedroom 3	3448 X 2760 mm
Bedroom 4	3094 X 2700 mm
Bathroom	2335 X 3025 mm



Information contained within this brochure is for guidance only. Wharfedale Homes Ltd operates a policy of continuous development and features may change. It should be noted that while artist's impressions, models and photography are as accurate as possible they are only representative. These particulars should not be relied upon as accurately describing any of the specific matters prescribed by any order made under consumer and business protection regulations. This information does not constitute a contract, part of a contract or a warranty. All measurements are scaled from plans and some may be varied during construction.



**WHARFEDALE**  
HOMES

07388 388147 or 01423 799690  
sales@wharfedalehomes.co.uk | www.wharfedalehomes.co.uk