



Websters  
estate agents



# Heathfield North, Twickenham, TW2 7QW

Mid Terrace 2 bedroom Victorian home with no onward chain in a popular residential area just 0.4 miles from Twickenham town centre and mainline train station and within 0.7 miles of Chase Bridge, Twickenham Academy and St Richard Reynolds Schools.

In need of some updating and currently offering 933 sq ft of well balanced living space over 3 floors with a useable loft room, potential to extend, reconfigure the layout and fully loft convert to create a bespoke 4 bedroom home (subject to Planning Permission and Building Regulations)

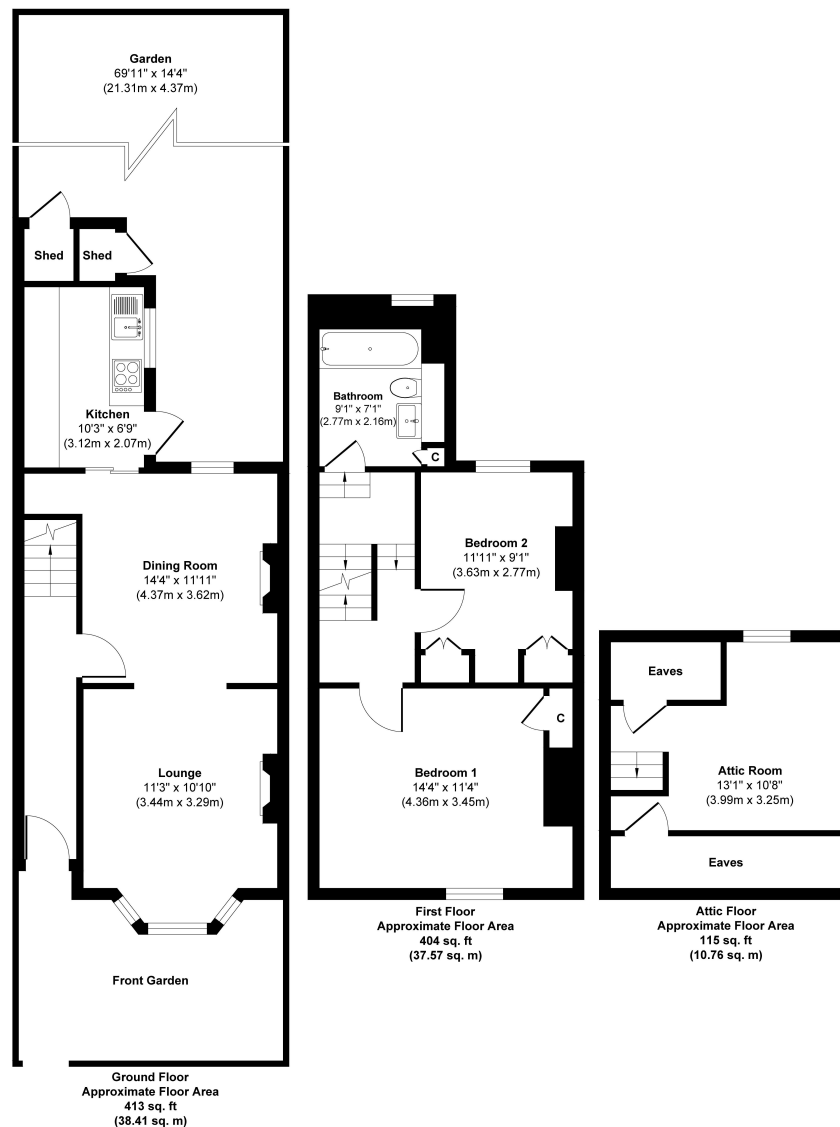
Entrance hallway leads to the dining room at the rear with a window overlooking the garden, open access to the bay fronted living room and a door opening into the kitchen. A door at the side opens onto the 70ft garden with paving, mature planting and shed storage. On the first floor are 2 double bedrooms, the family bathroom and a pull down ladder leading up to the loft room. Ideal as a study/occasional bedroom this useful room is fully decorated with a window overlooking gardens and has access to a large eaves storage cupboard.

Located 0.3 miles from Craneford playing fields, 0.2 miles from the A316 with direct access to M3/M25 and central London and 0.8 miles from Twickenham Green.

EPC Rating D

- Mid Terrace Victorian Home
- 2 Double Bedrooms and Upstairs Bathroom
- Useable Loft Room with Pull Down Ladder
- No Onward Chain
- Potential to Extend and Loft Convert (stpp)
- 0.4 Miles from Twickenham Station
- Within 0.7 Miles of Popular Schools





Approx. Gross Internal Floor Area 933 sq. ft / 86.74 sq. m

a Websters Estate Agents 36 Broad Street, Teddington, Middlesex TW11 8QY t 020 8614 6000 e sales@mywebsters.co.uk w mywebsters.co.uk

**Disclaimer**  
 These particulars, whilst believed to be accurate are set out as a general outline only for guidance and do not constitute any part of an offer or contract. Intending purchasers should not rely on them as statements of representation of fact, but must satisfy themselves by inspection or otherwise as to their accuracy. We have not carried out a detailed survey nor tested the services, appliances and specific fittings. Room sizes should not be relied upon for carpets and furnishings. The measurements given are approximate. No person in this firm's employment has the authority to make or give any representation or warranty in respect of the property.



