



Websters
estate agents

Hanworth Road,Whitton,TW4 5NS

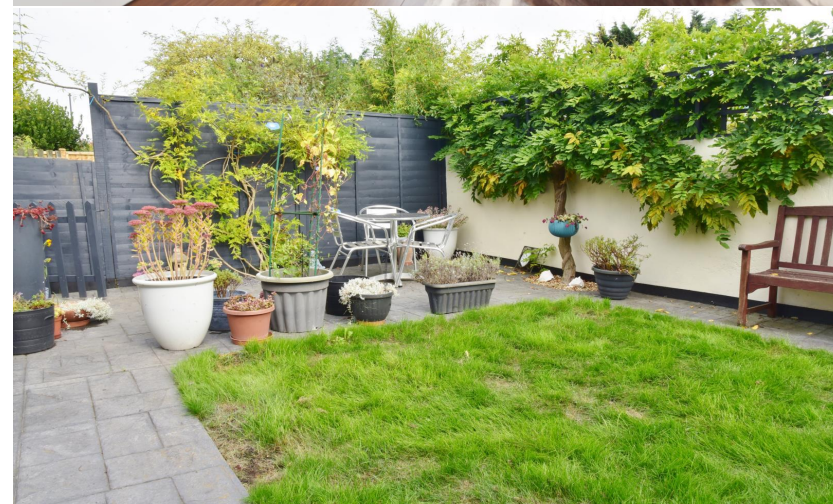
First Floor 2 double bedroom Maisonette set back from the road with a private rear garden. Situated less than 0.1 miles from local shops, 0.5 miles from popular Heathfield Primary School and just 1 mile from Whitton Town Centre and mainline train station.

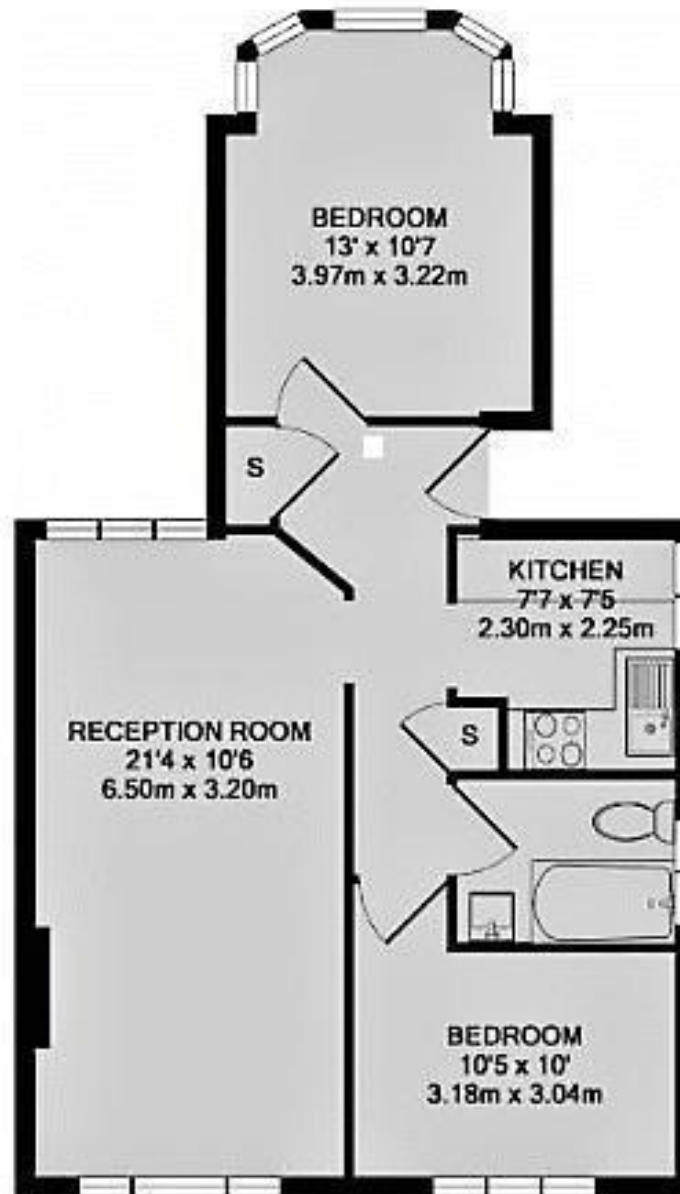
Offering 624 sq ft of living space and originally configured as 3 bedrooms with potential to create an occasional room in the loft space which is already insulated with a velux window, power and plumbing for central heating (may be subject to Council approval). Immaculately presented, this stylish property has been comprehensively refurbished by the current owners to an impressive standard with high specification fixtures, fittings and floorings, new boiler and central heating, double glazed windows and front door, cavity wall and loft insulation and modern decor throughout.

Private staircase at the side leads up to the front door with access to the spacious hallway. Doors lead to the dual aspect living/dining room, built in storage, the luxury recently fitted bathroom, the modern kitchen and 2 double bedrooms. To the rear of the property is the private gated garden with a lawn, paving and shed storage.

Located within 0.2 miles of public transport links towards Heathrow, Kingston and Richmond and 0.8 miles from the A316 with direct access to the M3/M25 and into central London. EPC Rating D

- First Floor 2 Bedroom Maisonette
- Private Rear Garden with Shed
- Immaculately Presented Throughout
- Available with a Brand New 178 Year Lease
- Living/Dining Room and Separate Kitchen
- Refurbished to Impressive Standard
- 0.1 Mile from Local Shops and Bus Stops





TOTAL APPROX. FLOOR AREA 612 SQ.FT. (56.9 SQ.M.)

a Websters Estate Agents 164 Heath Road, Twickenham, Middlesex TW1 4BN **t** 020 8892 3343 **e** sales@mywebsters.co.uk **w** mywebsters.co.uk

Disclaimer

These particulars, whilst believed to be accurate are set out as a general outline only for guidance and do not constitute any part of an offer or contract. Intending purchasers should not rely on them as statements of representation of fact, but must satisfy themselves by inspection or otherwise as to their accuracy. We have not carried out a detailed survey nor tested the services, appliances and specific fittings. Room sizes should not be relied upon for carpets and furnishings. The measurements given are approximate. No person in this firm's employment has the authority to make or give any representation or warranty in respect of the property.

