



Websters
estate agents

Millwood Road, Hounslow, TW3 2HQ

Semi Detached 4 bedroom home with driveway parking and a south facing garden with a purpose built studio/home office. Situated in a popular residential area 0.1 mile from Murray Park, 0.3 miles from Hounslow train station and 0.8 miles from Whitton town centre and train station.

With no onward chain and tastefully presented to offer 1651 sq ft of well balanced living space over 3 floors (inc garden room) with modern fixtures and fittings, built in storage, double glazed windows and doors, some new carpets and neutral decor throughout.

Entrance hallway leads to the bay fronted living room, the shower room and the open plan family room at the rear. This fabulous light filled room has a stylish fitted kitchen and adequate space for dining and seating. Folding doors open onto the garden with a deck, artificial lawn, mature planting, the studio room and gated side access.

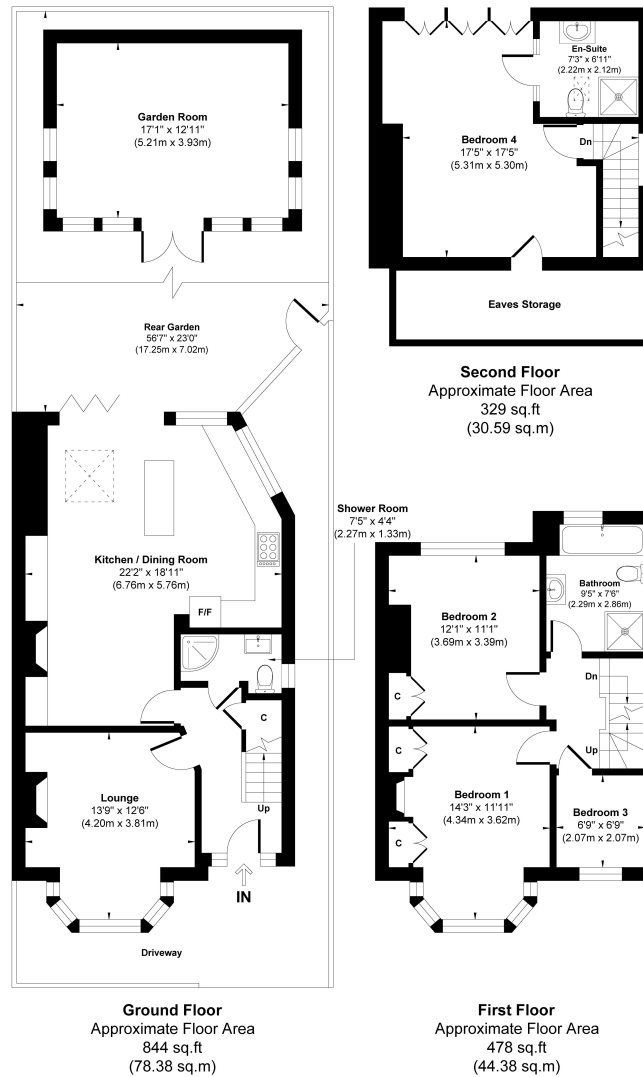
On the first floor are 3 bedrooms, the family bathroom and stairs up to the main bedroom with an en-suite shower room, eaves storage and a large juliet balcony.

Located within 0.8 miles of Nelson, Chase Bridge, St Edmunds and Turing House Schools and 0.9 miles from the A316 with direct access to the M3/M25 and central London
EPC Rating E

- Semi Detached 4 Bedroom Home
- South Facing Garden with Home Office/Studio
- No Onward Chain
- 1651 Sq Ft of Living Space over 3 Floors
- Driveway Parking and Gated Rear Access
- Within 0.8 Miles of Popular Schools
- 0.8 Miles from Whitton Station



Millwood Road, TW3



**Approx. Gross Internal Floor Area 1651 sq. ft / 153.35 sq. m
(Including Garden Room)**

This Plan is for Guidance only. Not drawn to scale unless stated. Window and door openings are approximate. The services, system and appliances shown have not been tested and no guarantee as to their operability and efficiency can be given. Whilst every care is taken in the preparation of this plan. Please check all dimensions, shapes and compass bearings before making decisions reliant upon them.
Produced by designimperial.com

a Websters Estate Agents 36 Broad Street, Teddington, Middlesex TW11 8QY **t** 020 8614 6000 **e** sales@mywebsters.co.uk **w** mywebsters.co.uk

Disclaimer

These particulars, whilst believed to be accurate are set out as a general outline only for guidance and do not constitute any part of an offer or contract. Intending purchasers should not rely on them as statements of representation of fact, but must satisfy themselves by inspection or otherwise as to their accuracy. We have not carried out a detailed survey nor tested the services, appliances and specific fittings. Room sizes should not be relied upon for carpets and furnishings. The measurements given are approximate. No person in this firm's employment has the authority to make or give any representation or warranty in respect of the property.

