

LAKESIDE DRIVE,
NW10

£525,000

Park Royal



**LAKESIDE DRIVE, PARK ROYAL,
NW10 £525,000**



19ft Reception Room



Open Plan Kitchen



Two Double Bedrooms



Two Bathrooms



Allocated Parking

An impressive high specification two bedroom first floor apartment with private southerly aspect balcony and secure allocated parking. This spacious 971 sq.ft apartment showcases a bright 19ft x 14ft reception room with contemporary open plan kitchen and access to a full width sunny balcony. The 24ft and 18ft double bedrooms both have en-suite bathrooms and there's an additional wc. As one of the largest flats in the development we advise an early inspection to avoid disappointment.

Pursuant of the Estate Agents Act 1979 we confirm that a relative of Northfields Estates has an interest in this property.

Bodiam Court is set in the prestigious Royal Waterside development featuring stylish apartments set in wonderful landscaped gardens with lakes and children's playground areas. The development is ideally located to take advantage of excellent transport links including Hanger Lane and Park Royal Underground stations and the A40/M40. A large variety of restaurants and leisure facilities including a cinema and gym located nearby.

EPC RATING: B

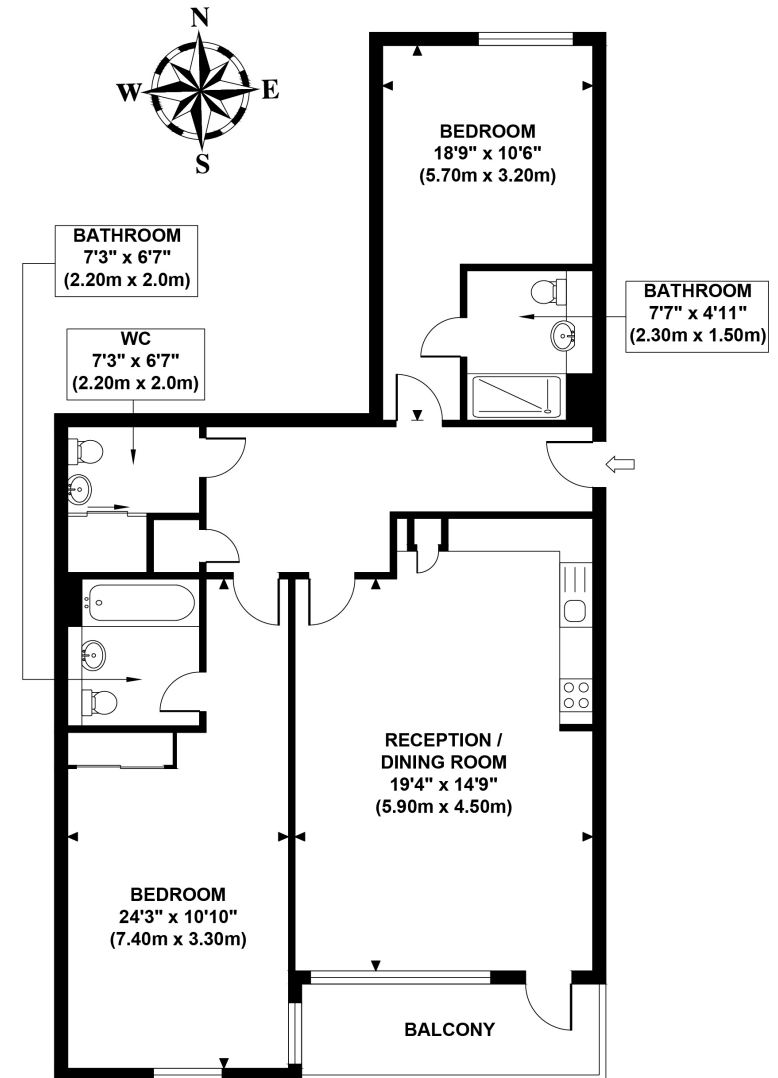
LOCAL AUTHORITY: London Borough of Ealing

COUNCIL TAX BAND: D

LENGTH OF LEASE: 999 years (less 3 days) commencing on 6 June 2013

You may wish to instruct us about a related service, including: the sale and letting of residential and commercial property, the provision of mortgage and financial services, conveyancing and property management. Where you choose to use other services, Northfields or its employees may receive a fee or commission which will be disclosed to you.

BODIAM COURT
Approximate Gross Internal Area
961 sq ft / 89.30 sq m



**FIRST FLOOR
GROSS INTERNAL
FLOOR AREA 961 SQ FT**

Although every attempt has been made to ensure accuracy, all measurements are approximate and no responsibility is taken for any error, omission, or mid-statement. This floor plan is for illustrative purposes only and not to scale. Measured in accordance to RICS standards.
GB PRO PHOTOS

Your local independent
award winning estate agents



awards by
THE SUNDAY TIMES
THE SUNDAY TIMES



awards by
THE SUNDAY TIMES
THE SUNDAY TIMES



awards by
THE SUNDAY TIMES
THE SUNDAY TIMES



awards by
THE SUNDAY TIMES
THE SUNDAY TIMES



awards by
THE SUNDAY TIMES
THE SUNDAY TIMES



awards by
THE SUNDAY TIMES
THE SUNDAY TIMES

Pitshanger

1 Albert Terrace

Ealing

London W5 1RL

Sales: 020 8998 3111

E: pitssales@northfields.co.uk

020 8998 3111

www.northfields.co.uk

CONTACT

Us today

TO FIND OUT

MORE