



Websters
estate agents
For Sale

Websters
estate agents

Lion Road, Twickenham, TW1 4JF

Mid Terrace 4 bedroom Victorian family home in a popular location just 0.2 miles from Twickenham Green, local shops, bars and restaurants and within 0.6 miles of Twickenham town centre and mainline train station.

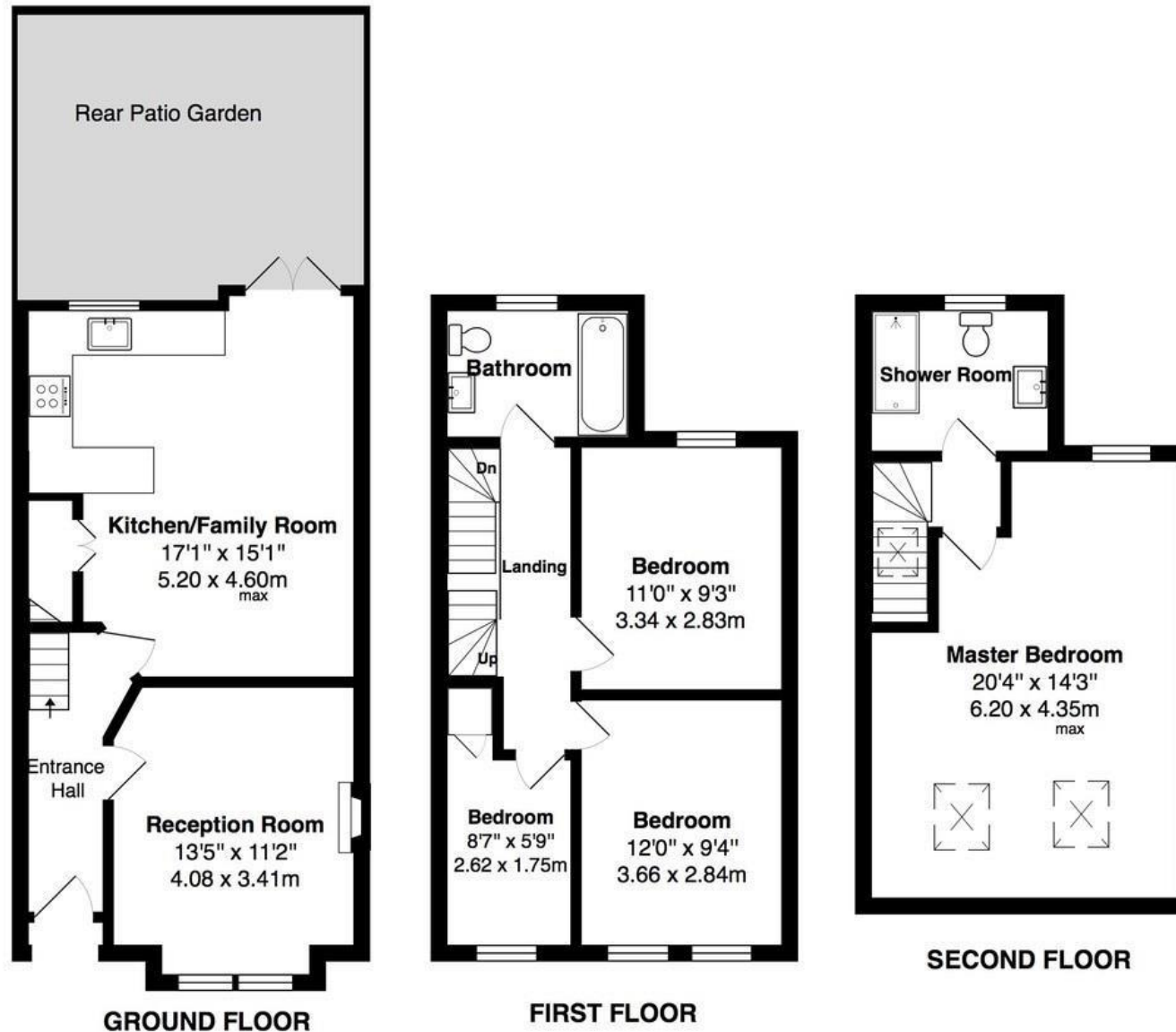
Loft converted and refurbished by the current owners to a high standard to offer 1195 sq ft of well balanced living space over 3 floors with quality fixtures and floorings, wood flooring in all rooms, sash style windows, charming period features and modern neutral decor throughout.

Entrance hallway leads to bay fronted living room and the kitchen/family room with space for seating and dining, storage cupboard and a stylish integrated kitchen. Double doors open onto the low maintenance paved rear garden. On the first floor are 3 bedrooms, the luxury family bathroom and stairs up to the shower room and the master bedroom.

Located less than 0.4 miles from Archdeacon Primary and St Richard Reynolds and just 0.6 miles from Trafalgar Primary School.
EPC Rating C

- Mid Terrace Victorian Family Home
- 4 Bedrooms and 2 Bathrooms
- Loft Converted and Refurbished
- Living Room and Kitchen/Family Room
- Popular Twickenham Location
- Close to Numerous Popular Schools
- 0.2 Miles from Twickenham Green





TOTAL FLOOR AREA approx.= 1,195 Sq.Feet (111 sq.metres)

a Websters Estate Agents 36 Broad Street, Teddington, Middlesex TW11 8QY

t 020 8614 6000

e sales@mywebsters.co.uk **w** mywebsters.co.uk

Disclaimer

These particulars, whilst believed to be accurate are set out as a general outline only for guidance and do not constitute any part of an offer or contract. Intending purchasers should not rely on them as statements of representation of fact, but must satisfy themselves by inspection or otherwise as to their accuracy. We have not carried out a detailed survey nor tested the services, appliances and specific fittings. Room sizes should not be relied upon for carpets and furnishings. The measurements given are approximate. No person in this firm's employment has the authority to make or give any representation or warranty in respect of the property.

