



Websters
estate agents
0203 0814 8888
mywebsters.co.uk

8am - 4pm
Temporary Waiting
Restrictions
No parking within
5 metres of this
streetlight
STREET LIGHTING
COLUMN
REPLACEMENT
12.5.2015

1
2

Websters
estate agents

Somerset Road, Teddington, TW11 8RY

Delightful sash bay fronted Victorian home on a popular Teddington residential road less than 0.3 miles from town centre shops and restaurants and within 0.9 miles of Waldegrave Girls School and numerous popular Primary and Junior Schools (just 100 metres to St Marys and St Peters).

In need of some modernisation and with potential to reconfigure the layout (subject to Planning Permission and Building Regulations).

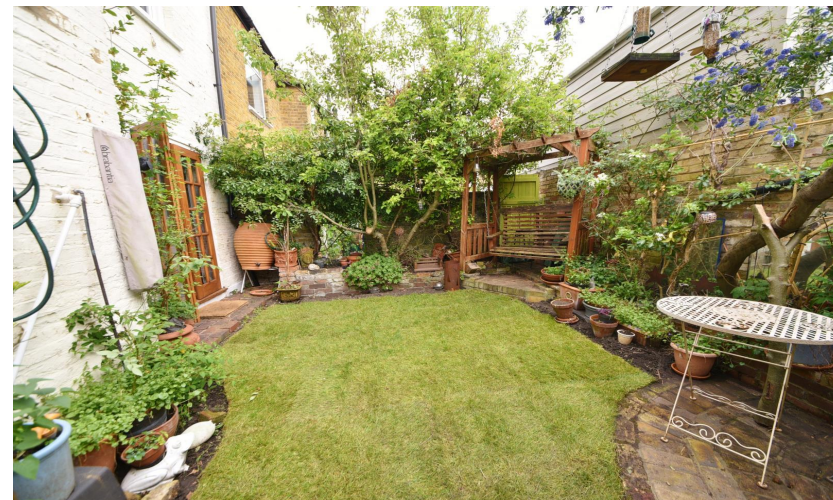
This charming double fronted period property offers 983sq ft of light filled and adaptable living space with large sash windows, feature fireplaces and a private south facing walled garden with rear gated access.

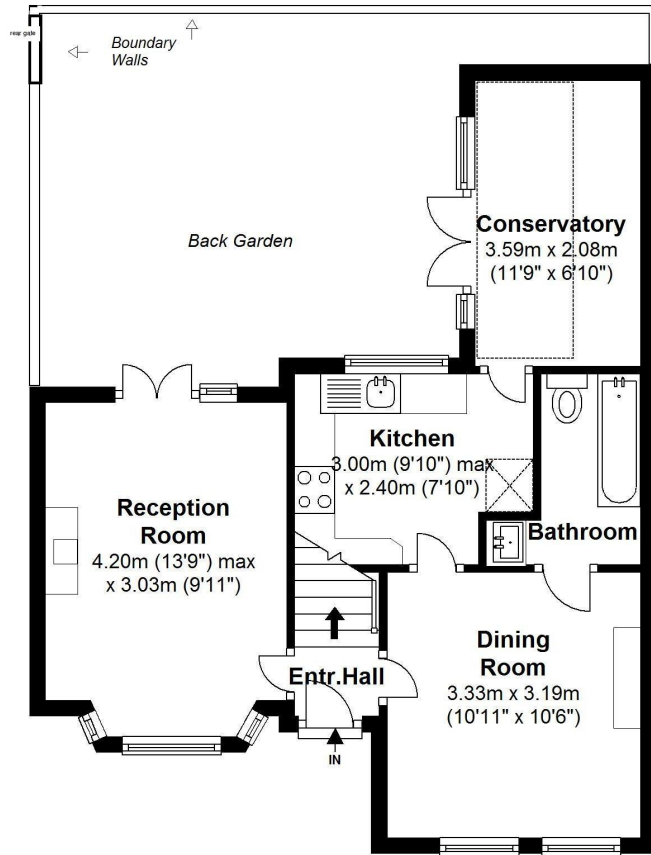
The entrance hallway leads to the dual aspect bay fronted living room with doors onto the garden and the separate dining room with doors to the bathroom and the kitchen at the rear. A further door leads into the garden room/conservatory and onto the garden. Upstairs are 3 good sized bedrooms and storage.

Located only 1 mile from Teddington Lock and the River Thames with fabulous towpath walks towards Hampton Court and Richmond, 0.5 miles from Teddington station and 0.8 miles from Bushy Park.

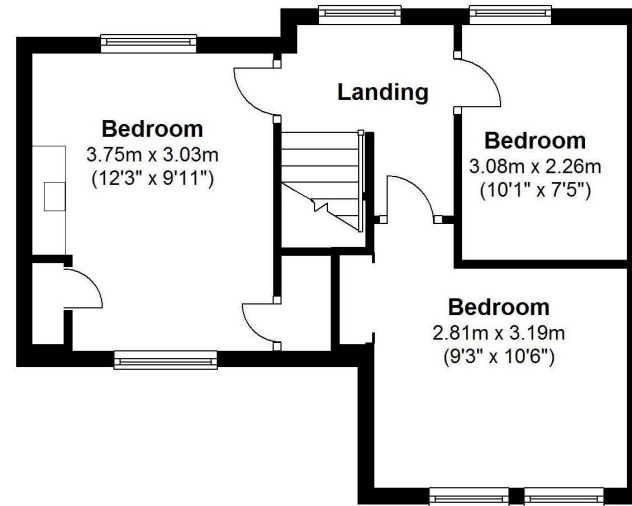
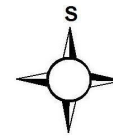
EPC Rating E

- Double Fronted Victorian Property
- In Need of Modernisation
- 3 Good Sized Bedrooms
- South Facing Walled Garden
- 2 Reception Rooms, Kitchen and Conservatory
- Potential to Reconfigure Layout
- 0.5 Miles from Teddington Station





Ground Floor



First Floor

Total Floor Area approx. = 983 Sq. Feet (91.29sq.metres)
Copyright epcertificate.com

