



10

8

12

Websters
estate agents

May Road, Twickenham, TW2 6QP

Mid Terrace 3 bedroom Victorian family home with a private west facing garden and no onward chain. Situated in a desirable residential area less than 100 metres from Twickenham Green, local shops, cafes and restaurants, 0.5 miles from Strawberry Hill train station and within 0.8 miles of Twickenham town centre and station.

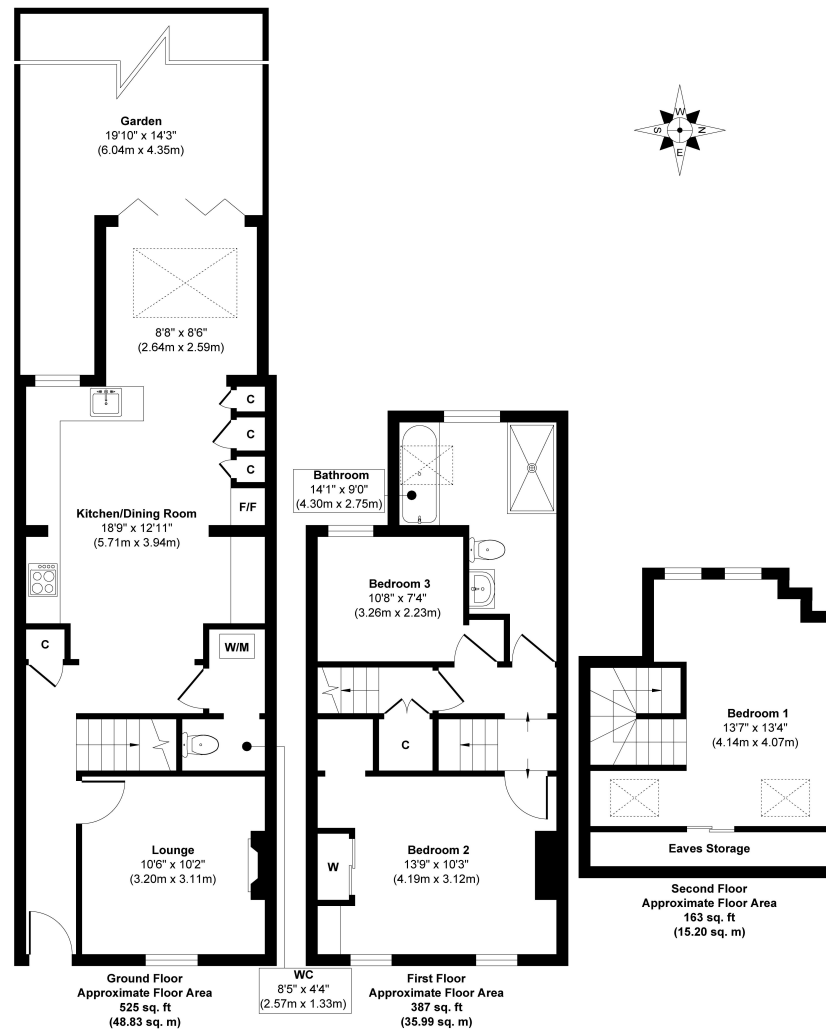
Extended and loft converted to an impressive standard to offer 1075 sq ft of well proportioned living space over 3 floors with high quality fixtures, fittings and floorings, double glazed windows and doors, a recently fitted energy efficient boiler and contemporary neutral decor throughout.

Entrance hallway opens into the living room and the open plan kitchen/family room with a stylish integrated kitchen, space for dining and seating and access to a w.c/utility room. Folding doors open onto the low maintenance rear garden. On the first floor are 2 bedrooms, the large family bathroom and a door to stairs leading up to the main bedroom with garden views and eaves storage.

Located 0.3 miles from Kneller Gardens with a bike/towpath track along the River Crane to Crane Park, within 0.3 miles of Archdeacon, Trafalgar and TPA Schools and 0.7 miles of St Richard Reynolds and Waldegrave Girls/Co-ed Sixth Form.
EPC Rating D

- Mid Terrace 3 Bedroom Victorian Home
- No Onward Chain
- 1075 Sq Ft of Living Space over 3 Floors
- Extended and Loft Converted
- West facing Garden
- Within 0.7 Miles of Popular Schools
- 0.5 Miles from Strawberry Hill Station





Approx. Gross Internal Floor Area 1075 sq. ft / 100.02 sq. m

a Websters Estate Agents 36 Broad Street, Teddington, Middlesex TW11 8QY

t 020 8614 6000

e sales@mywebsters.co.uk w mywebsters.co.uk

Disclaimer

These particulars, whilst believed to be accurate are set out as a general outline only for guidance and do not constitute any part of an offer or contract. Intending purchasers should not rely on them as statements of representation of fact, but must satisfy themselves by inspection or otherwise as to their accuracy. We have not carried out a detailed survey nor tested the services, appliances and specific fittings. Room sizes should not be relied upon for carpets and furnishings. The measurements given are approximate. No person in this firm's employment has the authority to make or give any representation or warranty in respect of the property.

