



Northfields

THE ORCHARD  
W4

£310,000 Offers In Excess Of

Chiswick





## THE ORCHARD ,W4

£310,000 Offers In Excess Of



Bright Reception Room



Separate Kitchen



One Double Bedroom



One Bathroom



1st come 1st served

A generous purpose built, one double bedroom flat with a separate kitchen in a well maintained building offering over 340sq ft of living space.

With laminate flooring and plenty of natural light throughout this delightful apartment offers convenient living in a desirable location with the added benefit of being chain free.

There is parking within the communal gardens and the transport links of Turnham Green Station (District line) are within a short walk. Chiswick High Road offers an abundance of shopping, restaurants and cafes just moments from this appealing flat.

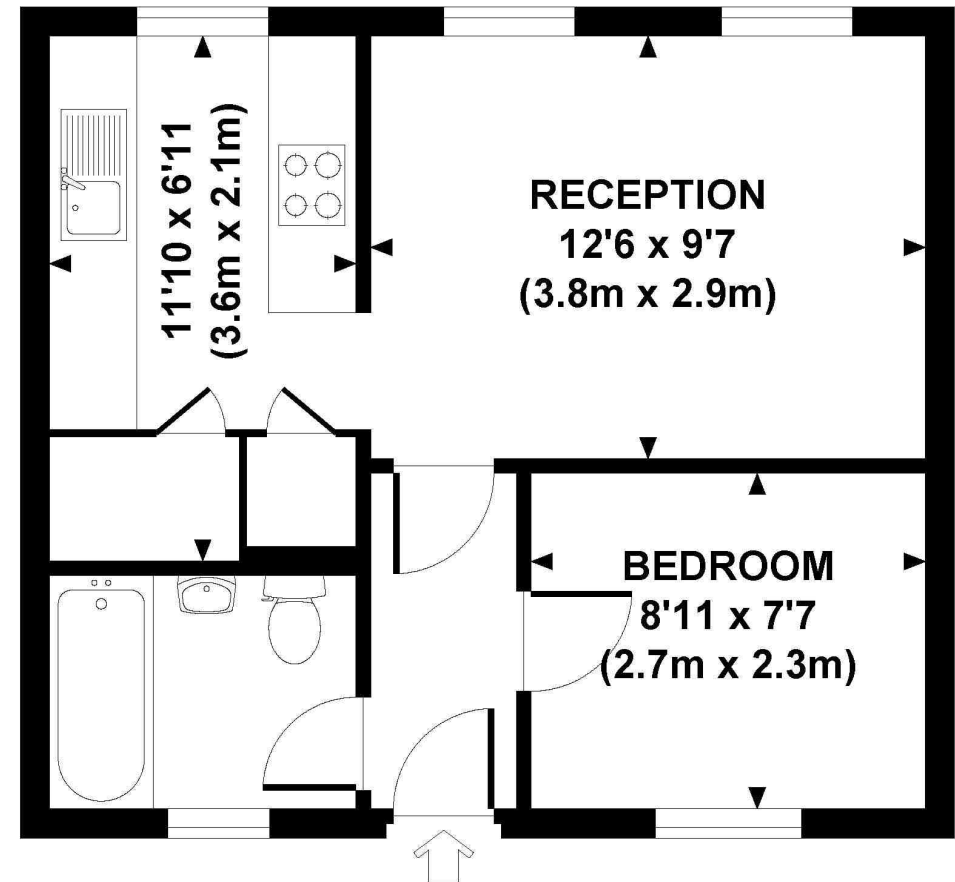
EPC RATING: E

LOCAL AUTHORITY: London Borough of Ealing

COUNCIL TAX BAND: C

TENURE: 125 years from 19 January 2015

You may wish to instruct us about a related service, including: the sale and letting of residential and commercial property, the provision of mortgage and financial services, conveyancing and property management. Where you choose to use other services, Northfields or its employees may receive a fee or commission which will be disclosed to you.



**SECOND FLOOR  
GROSS INTERNAL  
FLOOR AREA 342 SQ FT**

Your local independent  
award winning estate agents



Shepherds Bush

127 Askew Road,  
Shepherds Bush W12 9AU  
Sales: 020 8740 8833  
E: sbsales@northfields.co.uk

020 8740 8833

[www.northfields.co.uk](http://www.northfields.co.uk)

CONTACT

*Us today*

TO FIND OUT

MORE