



Websters
estate agents

Colonial Avenue, Twickenham, TW2 7EE

Mid Terrace Victorian Cottage in a quiet residential location with an 80ft west facing garden 0.1 mile from Murray Park and less than 0.6 miles from Whitton and Hounslow mainline train stations.

In need of complete refurbishment this charming property currently offers 926 sq ft of living space over 2 floors with period features, original flooring and recently fitted sash style double glazed windows.

With vacant possession and no chain and potential to extend and loft convert (subject to Planning Permission and Building Regulations) to create a bespoke and contemporary family home.

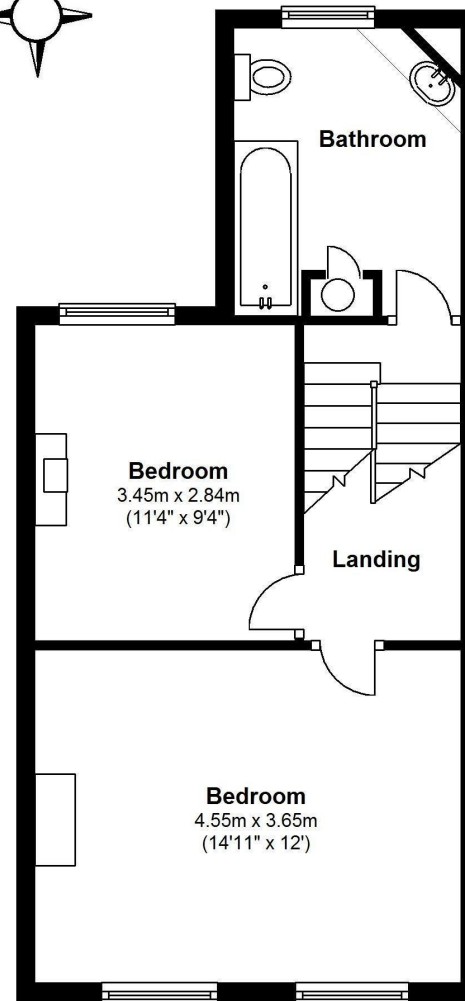
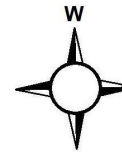
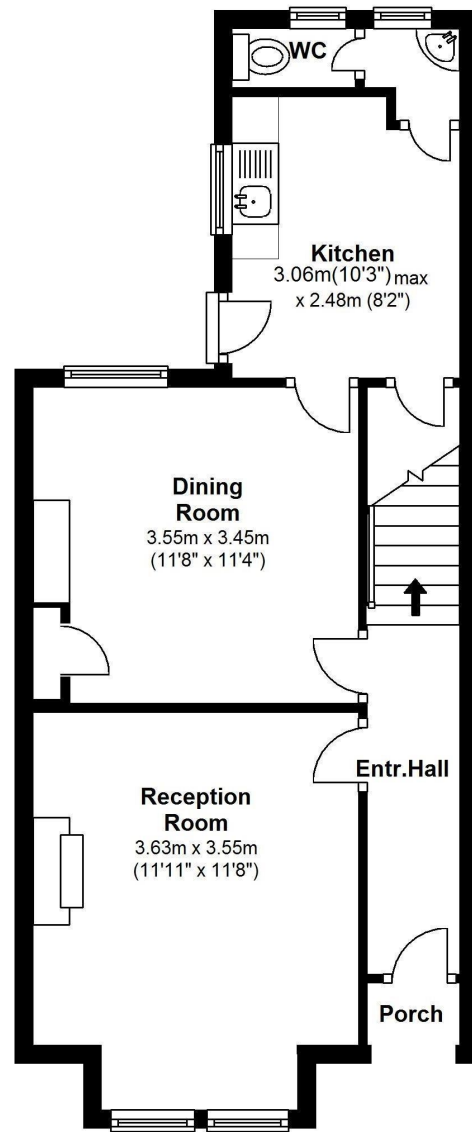
Entrance hallway leads to the bay fronted living room and the dining room. A door leads into the kitchen area with access to understairs storage, a w.c and directly onto the 80ft west facing garden with a secure rear gated entrance.

On the first floor are 2 double bedrooms, the family bathroom and hatch access to loft storage

Located 0.4 miles from Whitton Town Centre and less than 0.7 miles from highly regarded Chase Bridge, Nelson and St Edmunds Primary Schools.
EPC Rating E

- Mid Terrace Victorian Cottage
- In Need of Complete Refurbishment
- Potential to Extend and Loft Convert (stpp)
- Vacant Possession and No Chain
- 2 Bedrooms and Upstairs Bathroom
- 926 Sq Ft of Living Space over 2 Floors
- 0.6 Miles from Whitton Mainline Station





Site Plan
(Not to Scale)

Ground Floor

First Floor

Total Floor Area approx. = 926 Sq.Ft (86 sq.metres)

