



010

Websters  
estate agents

# Beech Way, Twickenham, TW2 5JS

Semi Detached 3 bedroom home with side access to the private garden with a garden room/home office. Situated in a popular residential area just 0.2 miles from Crane Park, 0.3 miles from local shops, the A316 with direct access to the M3/M25 and central London and 0.9 miles from Whitton town centre and mainline train station.

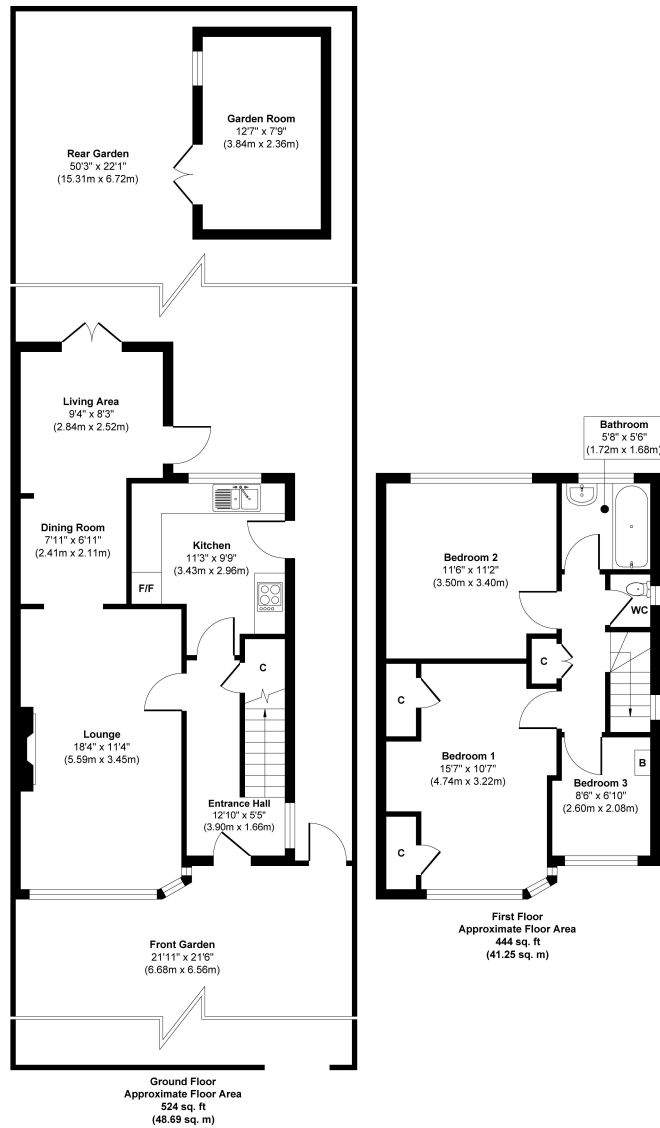
Tastefully presented to offer 968 sq ft of well balanced living space over 2 floors with modern fixtures and fittings, parquet flooring downstairs, double glazed windows and doors and potential to extend, re-configure the layout and loft convert (subject to Planning Permission and Building Regulations)

Entrance hallway leads to the bay fronted living room, the dining/sitting area and the separate fitted kitchen. Doors open onto the garden with a patio, lawn, mature planting, shed storage, garden room and gated side access. On the first floor are 3 bedrooms, the bathroom, separate w.c and hatch access to loft storage.

Located 0.7 miles from Heathfield and Bishop Perrin Primary and less than 0.9 miles from Turing House and Waldegrave Girls School/Co-ed Sixth Form.  
EPC Rating

- Semi Detached 3 Bedroom Home
- 968 Sq Ft of Living Space over 2 Floors
- Potential to Extend and Loft Convert (stpp)
- Garden with Gated Side Access
- Parquet Flooring Downstairs
- Popular Residential Area
- Within 0.7 Miles of Popular Schools





Approx. Gross Internal Floor Area 968 sq. ft / 89.94 sq. m

a Websters Estate Agents 36 Broad Street, Teddington, Middlesex TW11 8QY

t 020 8614 6000

e sales@mywebsters.co.uk w mywebsters.co.uk

**Disclaimer**

These particulars, whilst believed to be accurate are set out as a general outline only for guidance and do not constitute any part of an offer or contract. Intending purchasers should not rely on them as statements of representation of fact, but must satisfy themselves by inspection or otherwise as to their accuracy. We have not carried out a detailed survey nor tested the services, appliances and specific fittings. Room sizes should not be relied upon for carpets and furnishings. The measurements given are approximate. No person in this firm's employment has the authority to make or give any representation or warranty in respect of the property.

