



Northfields

SPENCER ROAD
TW7

£875,000

Isleworth



Spencer Road Isleworth

SPENCER ROAD, TW7

£875,000



Reception Room



Kitchen



Five Bedrooms



Bathroom



Off street parking

A beautifully presented four/five bedroom family home situated on a prime residential road within a short walk of Osterley & East Hounslow tube station. The property has fantastic ground floor living areas making entertaining family and friends very desirable. Externally the property features gated off street parking for two cars, a larger than usual private rear garden with a outhouse.

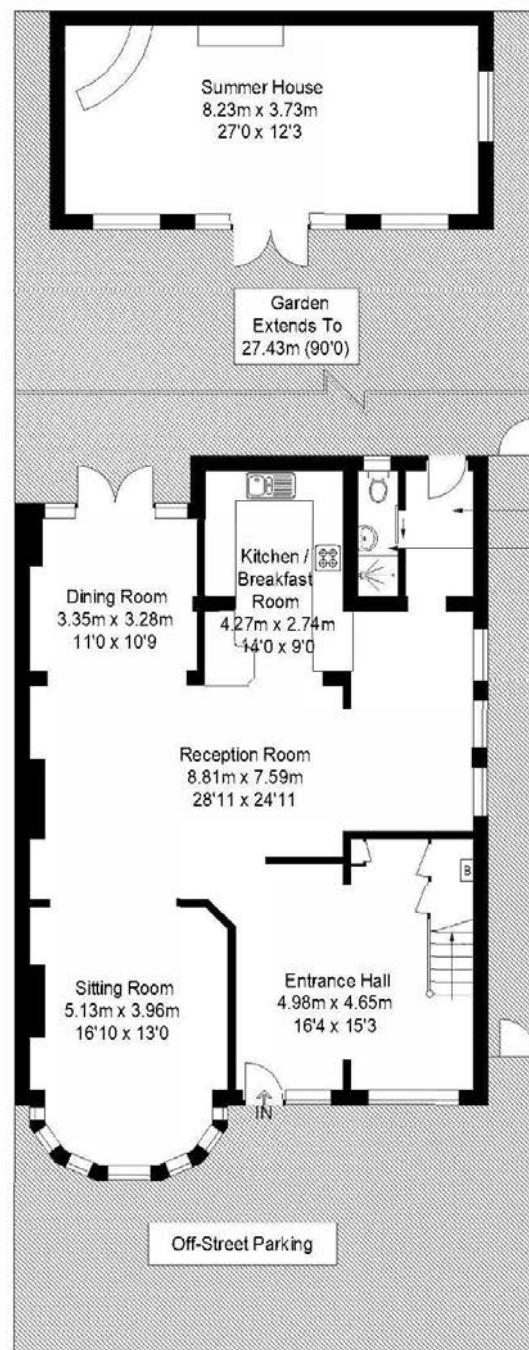
Spencer Road is well placed for easy access to Isleworth BR Mainline station, Osterley Tube & Hounslow East tube (Piccadilly Line). The shops and amenities of Isleworth are within easy walking distance and St Margaret's & Richmond town centres are also close by.

EPC RATING: F

LOCAL AUTHORITY: Hounslow

COUNCIL TAX BAND: G

You may wish to instruct us about a related service, including: the sale and letting of residential and commercial property, the provision of mortgage and financial services, conveyancing and property management. Where you choose to use other services, Northfields or its employees may receive a fee or commission which will be disclosed to you.



Ground Floor
1195 sq ft / 111.0 sq m

Approximate Gross Internal Area
2031 sq ft / 188.7 sq m
Summer House = 337 sq ft / 31.3 sq m
Total = 2368 sq ft / 220.0 sq m
External Garden / Off-Street Parking
1290 sq ft / 119.8 sq m



First Floor
836 sq ft / 77.7 sq m

Cube Property Marketing © 2019
Illustration for identification purposes only,
measurements are approximate, not to scale.

Your local independent award winning estate agents



Northfields

130-132 Northfield Avenue,
Ealing W13 9RT
Sales: 020 8840 6666
E: nasales@northfields.co.uk

020 8840 6666

www.northfields.co.uk

CONTACT

Us today

TO FIND OUT

MORE