



25

27

Chudleigh Road, Twickenham ,TW2 7QP

Attractive semi detached 4 bedroom house in a highly regarded residential location with driveway parking and a south facing garden. Situated 0.3 miles from Twickenham mainline station and only 200 metres from the A316 with direct access to the M3/M25 and into central London.

Tastefully presented throughout with light neutral decor and a spacious period feel. This lovely home offers 1354 sq ft of living space over 3 floors with potential to extend/alter the layout at the rear (subject to Planning Permission and Building Regulations).

Entrance hallway leads to the bay fronted living room, w.c and the kitchen/dining room. This light filled room has a stylish fitted kitchen, dining area and doors into the rear conservatory. Double doors open onto the south facing sun deck with steps down to the astroturf garden with mature planting, bbq seating area, shed and side access.

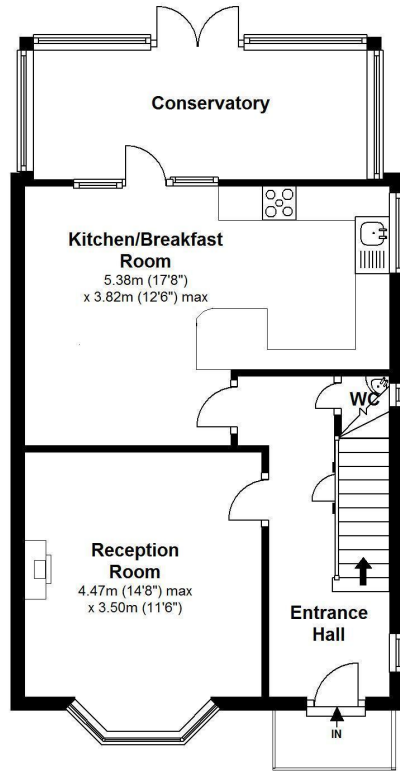
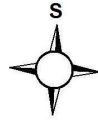
On the first floor are 3 bedrooms with built in storage and the family bathroom with stairs up to the master bedroom with en-suite shower facilities and eaves storage.

Located 0.7 miles from Church Street shops, bars and restaurants and within 1 mile of Orleans Park School/Sixth Form and numerous highly regarded Richmond Borough primary and junior schools.

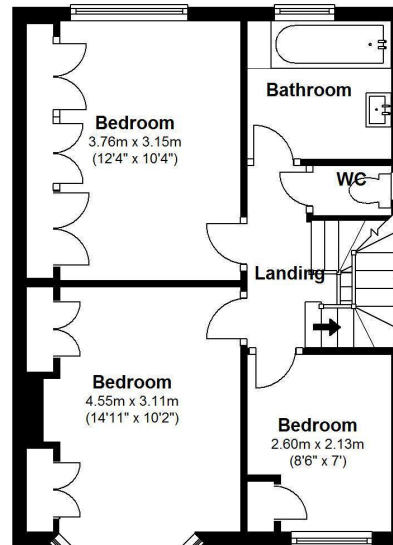
EPC Rating D

- Semi Detached Family House
- 4 Bedrooms and 2 Bathrooms
- Living Room and Separate Kitchen/Dining Room
- 1354 Sq Ft of Living Space over 3 Floors
- South Facing Garden with Side Access
- Driveway Parking Space
- 0.3 Miles from Twickenham Mainline Station

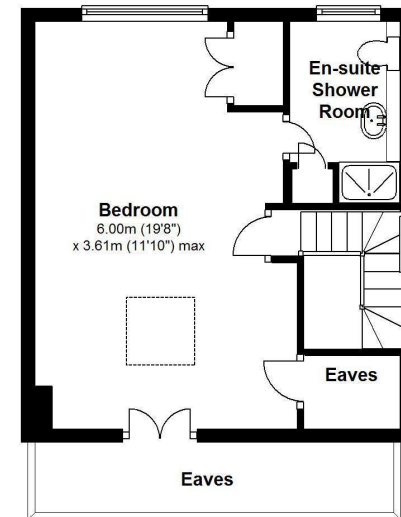




Ground Floor



First Floor



Second Floor

Total Floor Area approx.= 1,354 Sq.Feet(125.78sq.metres)

Copyright epcertificate.com

