



Northfields

MIDHURST ROAD
W13

£975,000

Northfields



MIDHURST ROAD, W13

£975,000



Reception Room



Kitchen Diner



Four Bedrooms



Two Bathrooms



Residents Permit

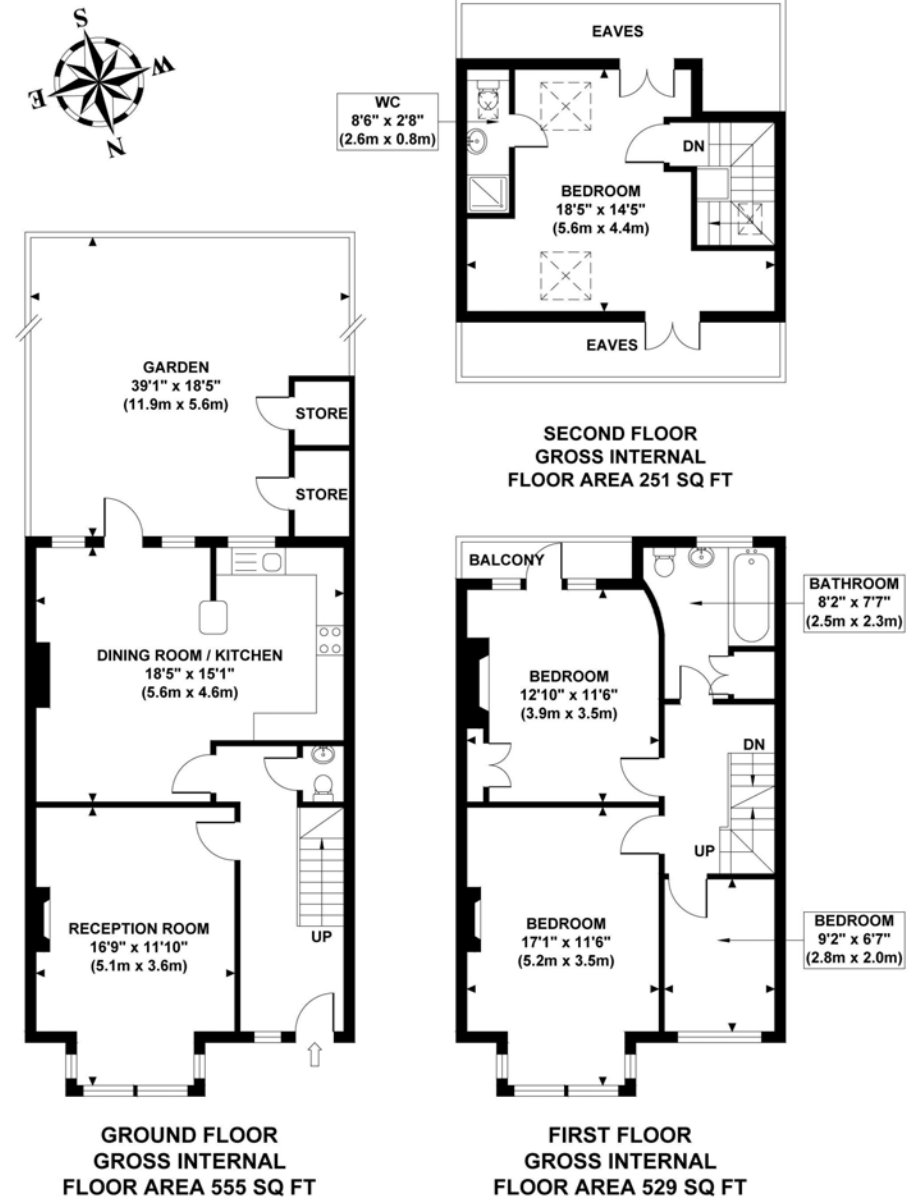
A charming and beautifully presented extended four bedroom house which has further potential to create more space subject to planning and building regulation consents. This wonderful home is set in the heart of Northfields and further benefits from a front family room, kitchen dining room, private front & rear garden, downstairs cloakroom, balcony, family bathroom and ensuite shower room in the loft.

Tucked into a highly sought-after family enclave between Northfield Avenue & Boston Manor Road this property benefits from a variety of transport & shopping facilities and also falls into the catchment area for the much coveted Fielding Primary School & Elthorne Park High School.

EPC RATING: TBC
LOCAL AUTHORITY: Ealing
COUNCIL TAX BAND: E

You may wish to instruct us about a related service, including: the sale and letting of residential and commercial property, the provision of mortgage and financial services, conveyancing and property management. Where you choose to use other services, Northfields or its employees may receive a fee or commission which will be disclosed to you.

MIDHURST ROAD
Approximate Gross Internal Area
1335 sq ft / 124.0 sq m



Although every attempt has been made to ensure accuracy, all measurements are approximate and no responsibility is taken for any error, omission, or mid-statement. This floor plan is for illustrative purposes only and not to scale. Measured in accordance to RICS standards.
GB PRO PHOTOS

Your local independent
award winning estate agents



Northfields

130-132 Northfield Avenue,
Ealing W13 9RT
Sales: 020 8840 6666
E: nasales@northfields.co.uk

020 8840 6666

www.northfields.co.uk

CONTACT

Us today

TO FIND OUT

MORE