



**BROMYARD AVENUE
W3**

£191,250 45% Share

Acton



BROMYARD AVENUE, W3

£191,250 - 45% Share



Reception Room



Kitchen



Two Bedrooms



One Bathroom



Parking Bay

* 100% Share Also Available at £425,000 *

This is a two-bedroom, second-floor flat with allocated parking, boasting a spacious open-plan reception room with a modern kitchen and a stylish family bathroom with a white suite and overhead shower.

This property is decorated in neutral tones and flooded with natural light throughout.

Bromyard House is a prestigious, well-managed development with a 24hr Concierge and communal gardens.

With East Acton Station (Central Line), Acton Central Overground Station, multiple bus routes to Shepherds Bush, and the shopping centres of Chiswick and Ealing close by this property is situated in a convenient location perfect for busy professionals.

* Rent with 45% share £407.15 * subject to change

EPC RATING: D

LOCAL AUTHORITY: Ealing

COUNCIL TAX BAND: E

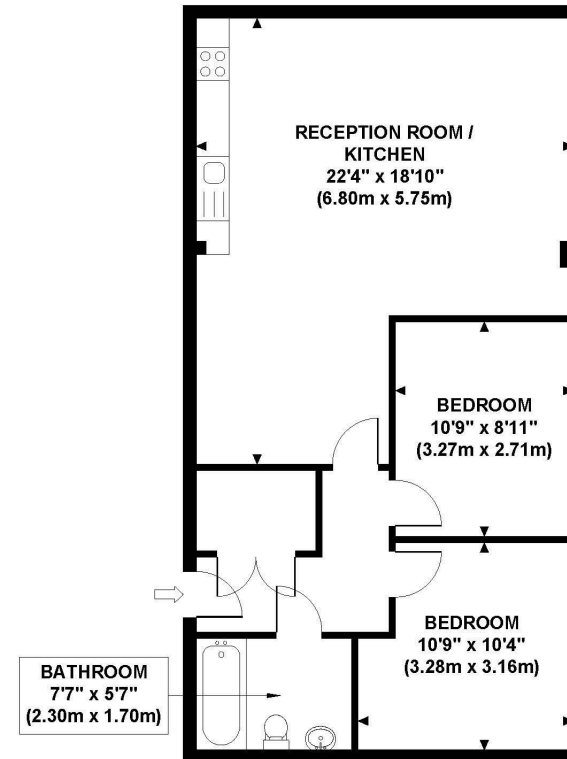
TENURE: 125 Years from 1st January 2004

You may wish to instruct us about a related service, including: the sale and letting of residential and commercial property, the provision of mortgage and financial services and/or conveyancing. Where you choose to use other services, Northfields or its employees may receive a fee or commission which will be disclosed to you.

Under The Consumer Protection from Unfair Trading Regulations 2008, these particulars are a guide and act as information only. All details are given in good faith and are believed to be correct at the time of printing. Northfields give no representation as to their accuracy and potential purchasers or tenants must satisfy themselves by inspection or otherwise as to their correctness. No employee of Northfields has authority to make or give any representation or warranty in relation to this property.

BROMYARD HOUSE

Approximate Gross Internal Area
691 sq ft / 64.20 sq m



SECOND FLOOR
GROSS INTERNAL
FLOOR AREA 691 SQ FT

Although every attempt has been made to ensure accuracy, all measurements are approximate and no responsibility is taken for any error, omission, or mid-statement. This floor plan is for illustrative purposes only and not to scale. Measured in accordance to RICS standards.
GB PRO PHOTOS

Your local independent award winning estate agents



Shepherds Bush

127 Askew Road,
Shepherds Bush W12 9AU
Sales: 020 8740 8833
E: sbsales@northfields.co.uk

020 8740 8833

www.northfields.co.uk

CONTACT

Us today

TO FIND OUT

MORE