



Northfields

MOUNT PARK ROAD
W5

£550,000

Ealing



MOUNT PARK ROAD, W5

£550,000



Large Reception Room



Separate Kitchen



Two Bedrooms



One Bathroom



Garage

This immaculately presented two bedroom apartment is situated on the top floor of a well-maintained building. This property offers an eat-in kitchen as well as the rare benefit of a private garage. The attention to detail with the décor throughout is of an exceptionally high standard.

The parquet flooring and the modern kitchen and bathroom demonstrates that no expense has been spared. The rooms are generously proportionated throughout and offering multiple storage options, including fitted wardrobes in both bedrooms that also benefit from west facing aspects. In addition you have a dedicated utility cupboard which conveniently houses a washer/drier and plenty of space to air clothes.

This property showcases a beautifully spacious reception room, perfect for family gatherings and entertaining. This room is further complimented by the tree-lined views of the Montpelier area and the spectacular architecture of St. Peter's Church.

Located on one of Ealing's prime and most sought after areas, Mount Park Road is on the doorstep of Montpelier Primary School & St. Benedict's School, which has received an outstanding Ofsted rating. With Ealing Broadway being only a short walk away, you have plenty of choice for shopping and dining as well as fantastic transport links on your doorstep. These include the imminent arrival of Crossrail, Central Line, District Line and National Rail.

EPC RATING: D

LOCAL AUTHORITY: London Borough of Ealing

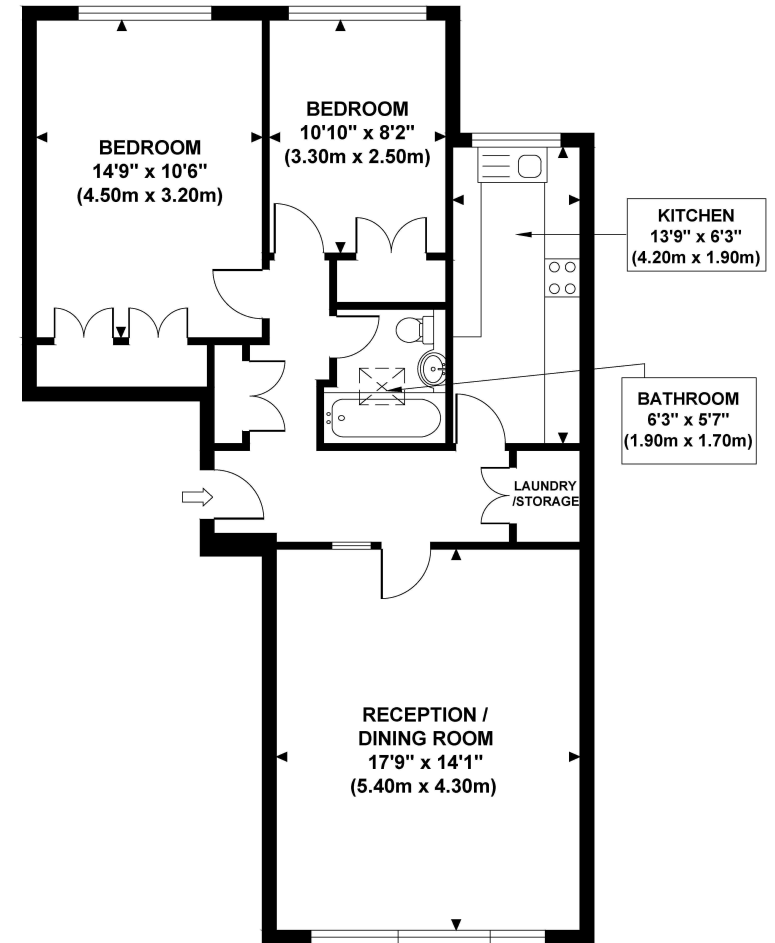
COUNCIL TAX BAND: D

LENGTH OF LEASE: 159 years from 1 January 1972

You may wish to instruct us about a related service, including: the sale and letting of residential and commercial property, the provision of mortgage and financial services, conveyancing and property management. Where you choose to use other services, Northfields or its employees may receive a fee or commission which will be disclosed to you.

PARKWOOD

Approximate Gross Internal Area
770 sq ft / 71.5 sq m



THIRD FLOOR
GROSS INTERNAL
FLOOR AREA 770 SQ FT

Although every attempt has been made to ensure accuracy, all measurements are approximate and no responsibility is taken for any error, omission, or mid-statement. This floor plan is for illustrative purposes only and not to scale. Measured in accordance to RICS standards.

Your local independent
award winning estate agents



Ealing Broadway

20 New Broadway
Ealing W5 2XA
Sales: 020 8280 9600
E: ebsales@northfields.co.uk

020 8280 9600

www.northfields.co.uk

CONTACT

Us today

TO FIND OUT

MORE