



Websters  
estate agents



# Denmark Road, Twickenham, TW2 5EN

Mid Terrace 2 double bedroom Victorian home in a popular residential location just 0.4 miles from Twickenham Green and local shops and only 0.5 miles from Fulwell and Strawberry Hill train stations.

Well balanced 730 sq ft of living space over 2 floors with modern fixtures, fittings and flooring, charming period features, double glazed windows and doors and potential to extend at the side on the ground floor and reconfigure the layout (subject to Building Regulations and Planning Permission)

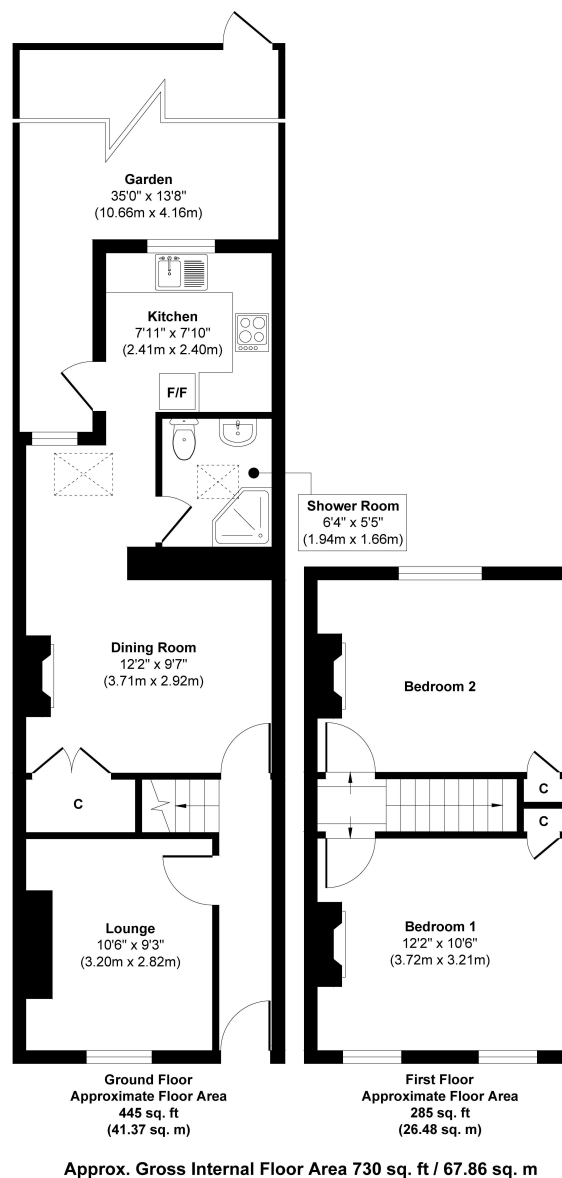
Entrance hallway leads to the living room and the dining room at the rear with access to the fitted kitchen and the shower room. A door at the side opens onto the 35ft garden with a patio, lawn, shed storage and gated rear access. On the first floor are 2 double bedrooms and hatch access to loft storage.

Located 0.2 miles from St James Primary, 0.4 miles from Stanley, Trafalgar and Archdeacon Primary Schools and just 0.1 mile from Waldegrave Girls School/Co-ed Sixth Form.

EPC Rating D

- Mid Terrace Victorian Home
- 2 Double Bedrooms
- 730 Sq Ft of Living Space over 2 Floors
- 35 Ft Garden with Rear Access
- Potential to Extend/Reconfigure Layout (stpp)
- 0.4 Miles from Twickenham Green
- Within 0.4 Miles of Popular Schools





**a** Websters Estate Agents 36 Broad Street, Teddington, Middlesex TW11 8QY

**t** 020 8614 6000

**e** sales@mywebsters.co.uk **w** mywebsters.co.uk

**Disclaimer**

These particulars, whilst believed to be accurate are set out as a general outline only for guidance and do not constitute any part of an offer or contract. Intending purchasers should not rely on them as statements of representation of fact, but must satisfy themselves by inspection or otherwise as to their accuracy. We have not carried out a detailed survey nor tested the services, appliances and specific fittings. Room sizes should not be relied upon for carpets and furnishings. The measurements given are approxiamte. No person in this firms employment has the authority to make or give any representation or warranty in respect of the property.



