



Websters
estate agents

Hampton Road, Twickenham, TW2 5QJ

Third Floor 2 double bedroom Apartment in a highly regarded, well maintained development with secure entry phone system, lift access to all floors, communal gardens and residents parking. Situated just 0.2 miles from Twickenham Green, local shops, cafes and restaurants and with easy access to public transport towards Richmond, Kingston and Heathrow.

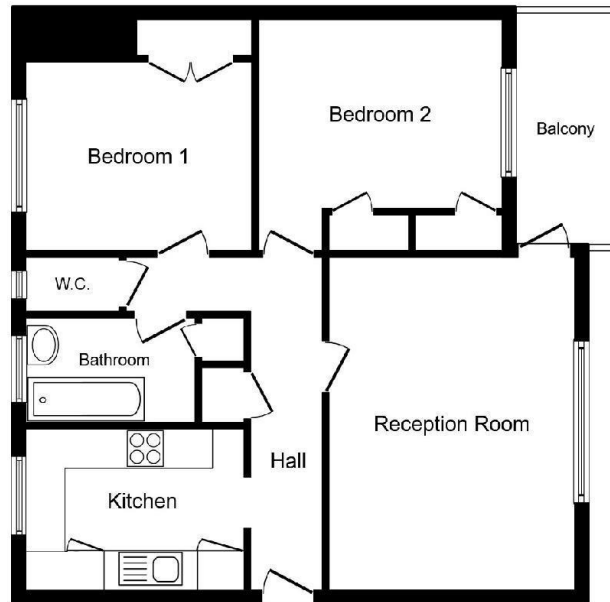
With no onward chain, a brand new Lease and offering 731 sq ft of well proportioned living space with modern fixtures, fittings and floorings, large double glazed windows and doors, built in storage, a private balcony and ground floor storage cupboard and neutral decor throughout.

Entrance hallway leads to the 2 bedrooms both with built in wardrobes, the bath/shower room, the separate w.c, the kitchen and the separate living/dining room with a door onto the balcony.

Located less than 0.5 miles from Strawberry Hill Village and Station and just 0.8 miles from Twickenham town centre and Thames riverside Radnor Gardens
EPC Rating D

- Third Floor 2 Double Bedroom Apartment
- Communal Gardens and Residents Parking
- New Lease and No Onward Chain
- Entry Phone Access and Lifts to All Floors
- Living/Dining Room with Private Balcony
- 0.5 Miles from Strawberry Hill Station
- 0.2 Miles from Twickenham Green





35 Carpenters Court, TW2 5QJ Third Floor

Approx size: 68 Sq m/731 sq ft

a Websters Estate Agents 36 Broad Street, Teddington, Middlesex TW11 8QY

t 020 8614 6000

e sales@mywebsters.co.uk **w** mywebsters.co.uk

Disclaimer

These particulars, whilst believed to be accurate are set out as a general outline only for guidance and do not constitute any part of an offer or contract. Intending purchasers should not rely on them as statements of representation of fact, but must satisfy themselves by inspection or otherwise as to their accuracy. We have not carried out a detailed survey nor tested the services, appliances and specific fittings. Room sizes should not be relied upon for carpets and furnishings. The measurements given are approximate. No person in this firm's employment has the authority to make or give any representation or warranty in respect of the property.

