



Websters
estate agents

Harrowdene Gardens, Teddington, TW11 0DL

Ground Floor 1 double bedroom flat in the popular Harrowdene Gardens development with direct access to gardens, a private garage and no onward chain. Situated just 0.5 miles from Teddington town centre shops, cafes, restaurants and 0.3 miles from the mainline train station.

Tastefully presented to offer 461 sq ft of living space with modern fixtures, fittings and flooring, large double glazed windows and doors and neutral decor throughout.

Entrance hallway leads to the double bedroom, the bathroom, the spacious living room with access to the modern fitted kitchen and a door opening onto the communal gardens.

Located just 0.3 miles from Bushy Park and less than 0.9 miles from Teddington Footbridge across the Thames with access to Ham Lands and towpath walks towards Richmond and Hampton Court.

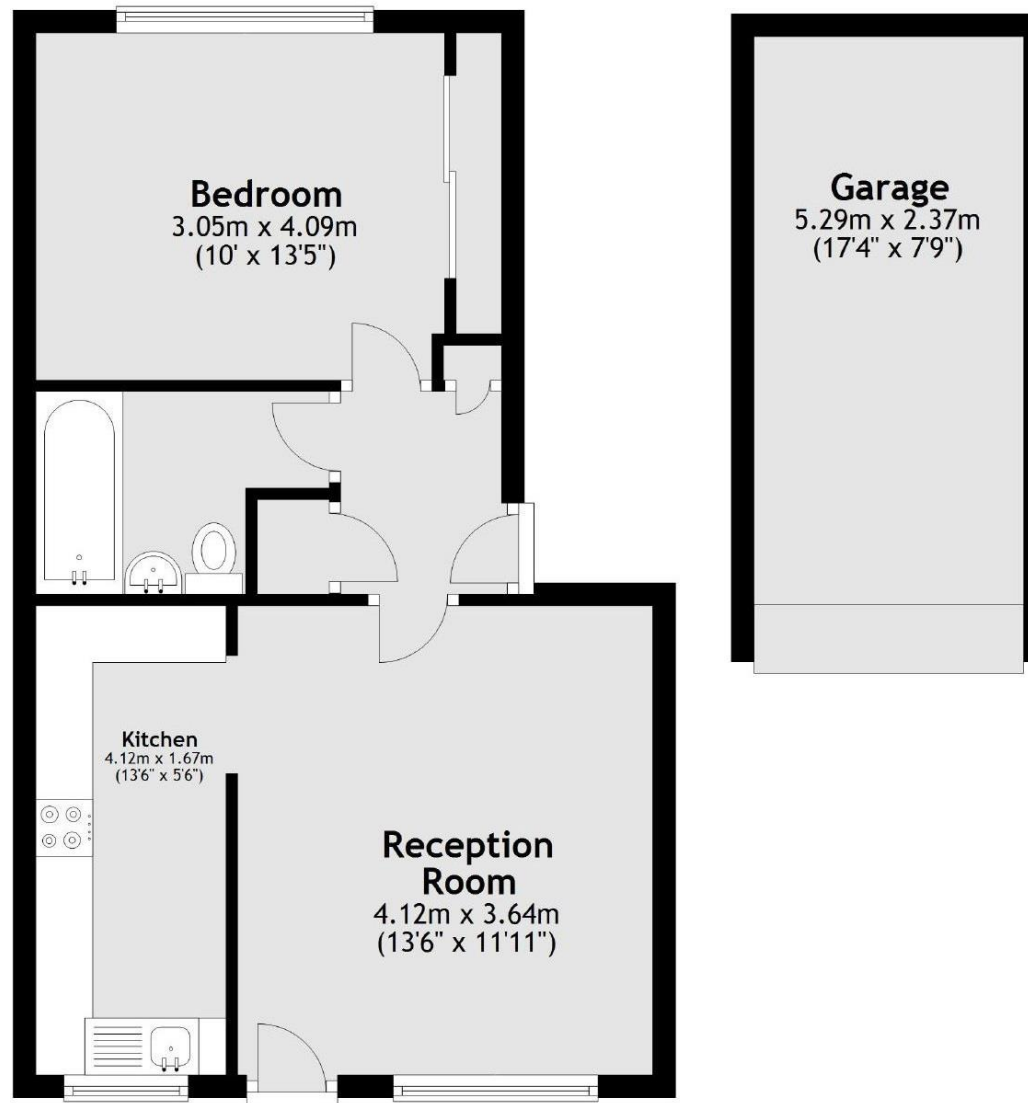
EPC Rating C

- Ground Floor 1 Bedroom Apartment
- Direct Access to Communal Gardens
- No Onward Chain
- Private Garage and Residents Parking
- Spacious Living Room and Modern Kitchen
- 0.5 Miles from Teddington Town Centre
- 0.3 Miles from Teddington Train Station



Main area: Approx. 42.9 sq. metres (461.6 sq. feet)

Plus garages, approx. 12.5 sq. metres (134.7 sq. feet)



Ground Floor

a Websters Estate Agents 36 Broad Street, Teddington, Middlesex TW11 8QY

t 020 8614 6000

e sales@mywebsters.co.uk **w** mywebsters.co.uk

Disclaimer

These particulars, whilst believed to be accurate are set out as a general outline only for guidance and do not constitute any part of an offer or contract. Intending purchasers should not rely on them as statements of representation of fact, but must satisfy themselves by inspection or otherwise as to their accuracy. We have not carried out a detailed survey nor tested the services, appliances and specific fittings. Room sizes should not be relied upon for carpets and furnishings. The measurements given are approximate. No person in this firm's employment has the authority to make or give any representation or warranty in respect of the property.

