



1 Grenville Mews, Hampton, TW12 1BE

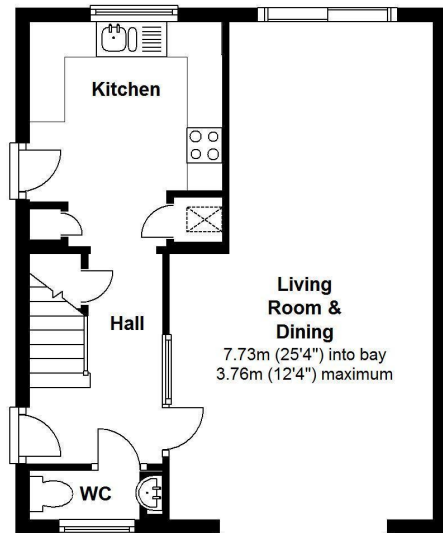
An impressive 3 bedroom semi detached Neo Georgian house forming part of a small mews development.

This well kept home has a spacious through lounge opening onto the garden, a modern fitted kitchen and a downstairs W.C. Upstairs are 3 three good sized bedrooms with built in wardrobes and a luxury family bathroom. There is driveway parking for several cars with access to a single garage. Potential for an extension to the side (subject to planning). A lovely feature of he property is the secluded south east facing rear garden.

Grenville Mews is situated just off Uxbridge Road and is yards from bus stops and only 400 yards from Sainsbury's and David Lloyd Health Club & Golf Course.

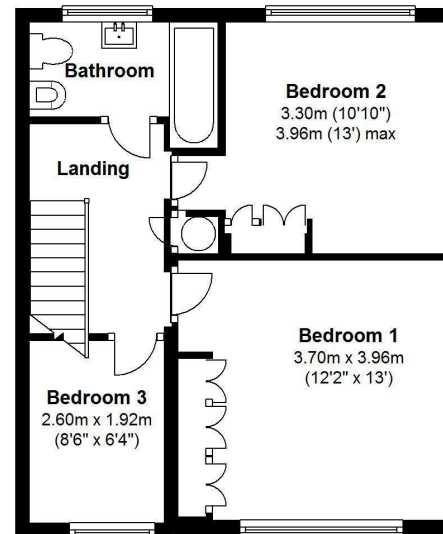
- Semi Detached House
- 3 Bedrooms
- Neo Georgian
- 25ft Through Lounge
- Tastefully Presented
- Double Glazed
- Driveway & Single Garage
- South East Facing Garden





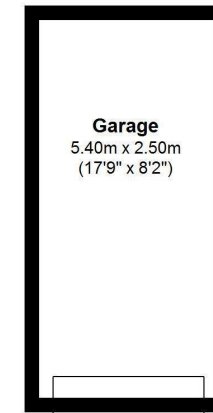
Ground Floor

Approx. 454 Sq. Feet (42.18 sq. metres)



First Floor

Approx. 443 Sq. Feet (41.18 sq. metres)



Garage detached
Approx. 145 Sq. Feet

Total Floor area approx. 897 Sq. Feet (83.36 sq. metres) excluding garage.

Disclaimer

These particulars, whilst believed to be accurate are set out as a general outline only for guidance and do not constitute any part of an offer or contract. Intending purchasers should not rely on them as statements of representation of fact, but must satisfy themselves by inspection or otherwise as to their accuracy. We have not carried out a detailed survey nor tested the services, appliances and specific fittings. Room sizes should not be relied upon for carpets and furnishings. The measurements given are approximate. No person in this firm's employment has the authority to make or give any representation or warranty in respect of the property.

