



**JOSLINGS CLOSE  
W12**

£86,250 \*25% SHARE\*

**Shepherds Bush**







# JOSLINGS CLOSE, W12

## £86,250 25% Share

# JOSLINGS CLOSE

Approximate Gross Internal Area  
521 sq ft / 48.40 sq m



15ft Reception Room



Separate Kitchen



One Bedroom



One Bathroom



Allocated Parking

This is an immaculately presented one-bedroom apartment with allocated parking and a private balcony with over 510 sq ft of living accommodation.

With wooden floors throughout and fresh white walls, the apartment is bright and spacious with a separate modern fitted kitchen that provides ample storage and integrated appliances.

The flat is well located in a quiet enclave but ideally situated for a wealth of amenities on the Uxbridge Road and easily accessible to Westfields with bus links available to Central London, Shepherds Bush and Ealing Broadway.

*We have been advised that the current rent with 25% share is £650 per month and Service Charge is £1,824.00 per annum. Further confirmation is required via the housing association.*

EPC RATING: C

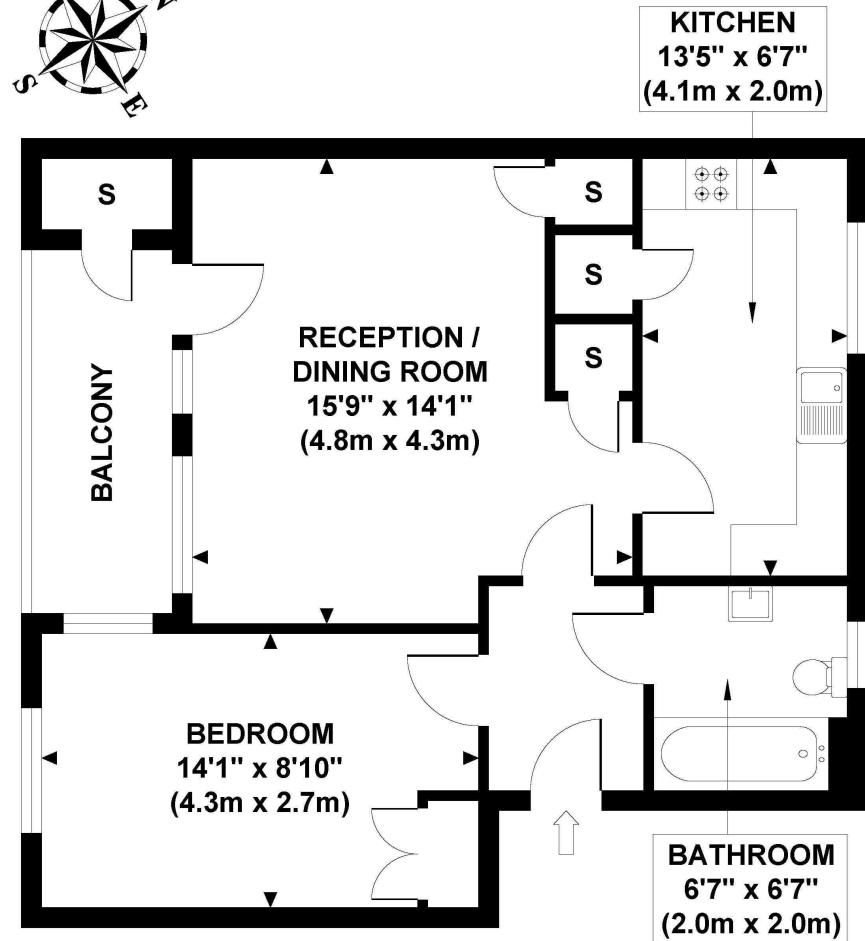
LOCAL AUTHORITY: London Borough of Hammersmith and Fulham

COUNCIL TAX BAND: D

TENURE: 99 Years from 24th June 2005

You may wish to instruct us about a related service, including: the sale and letting of residential and commercial property, the provision of mortgage and financial services and/or conveyancing. Where you choose to use other services, Northfields or its employees may receive a fee or commission which will be disclosed to you.

Under The Consumer Protection from Unfair Trading Regulations 2008, these particulars are a guide and act as information only. All details are given in good faith and are believed to be correct at the time of printing. Northfields give no representation as to their accuracy and potential purchasers or tenants must satisfy themselves by inspection or otherwise as to their correctness. No employee of Northfields has authority to make or give any representation or warranty in relation to this property.



**FIRST FLOOR  
GROSS INTERNAL  
FLOOR AREA 521 SQ FT**

Although every attempt has been made to ensure accuracy, all measurements are approximate and no responsibility is taken for any error, omission, or mid-statement. This floor plan is for illustrative purposes only and not to scale. Measured in accordance to RICS standards. GB PRO PHOTOS

Your local independent  
award winning estate agents



Shepherds Bush

127 Askew Road,  
Shepherds Bush W12 9AU  
Sales: 020 8740 8833  
E: sbsales@northfields.co.uk

020 8740 8833

www.northfields.co.uk

MORE

TO FIND OUT

*Us today*

CONTACT