



Websters
estate agents

Brinsworth Close, Twickenham, TW2 5BS

Mid Terrace 2 double bedroom home with a west facing garden in a popular residential cul-de-sac. Situated within 0.6 miles of Archdeacon, Trafalgar, St James and Waldegrave Girls/Co-ed Sixth Form and 0.7 miles from Strawberry Hill Station.

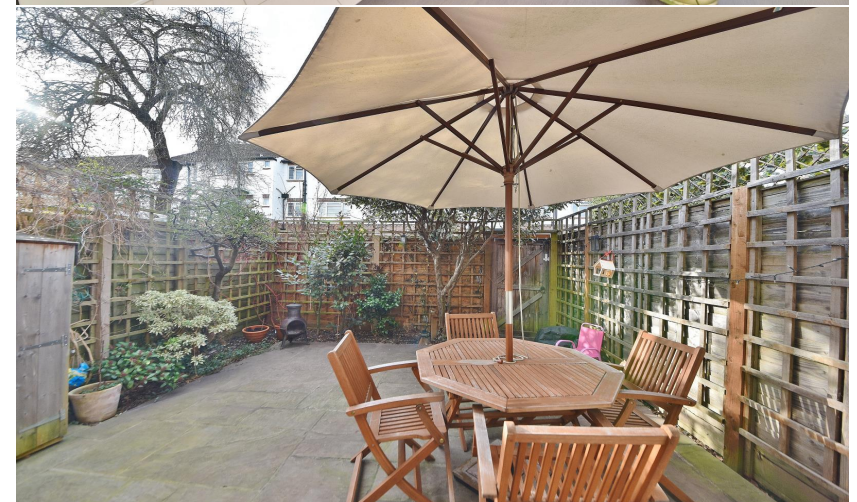
Tastefully presented to offer 819 Sq ft of well proportioned living space over 2 floors with high specification fixtures, fittings and floorings, double glazed windows and doors, neutral decor and potential to loft convert to create a bedroom with en-suite bathroom (subject to Planning Permission and Building Regulations)

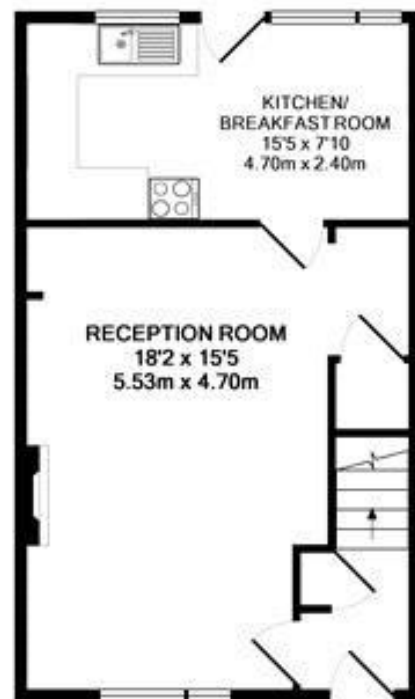
Entrance lobby leads to the living room with sapce for seating and dining and a door into the kitchen/breakfast room at the rear. This light filled room has a tiled floor, stylish fitted kitchen, seating area and doors onto the low maintenance garden with shed storage and gated rear access. On the first floor are 2 double bedrooms, the family bathroom and hatch access to loft storage.

Located 0.3 miles from Twickenham Green, local shops, cafes and restaurants aand 0.5 miles from Crane Park with bike and walking tracks along the River Crane towards Hanworth and Twickenham.

EPC Rating D

- Mid Terrace 2 Double Bedroom Home
- West Facing Garden
- Immaculately Presented
- Potential to Loft Convert (stpp)
- Desirable Cul-de-Sac Location
- Within 0.6 Miles of Popular Schools
- 0.7 Miles from Strawberry Hill Station





GROUND FLOOR
APPROX. FLOOR
AREA 38.0 SQ.M.
(409 SQ.FT.)



1ST FLOOR
APPROX. FLOOR
AREA 38.0 SQ.M.
(409 SQ.FT.)

BRINSWORTH CLOSE, TWICKENHAM, TW2 5BS
TOTAL APPROX. FLOOR AREA 76.0 SQ.M. (819 SQ.FT.)



a Websters Estate Agents 36 Broad Street, Teddington, Middlesex TW11 8QY

t 020 8614 6000

e sales@mywebsters.co.uk **w** mywebsters.co.uk

Disclaimer

These particulars, whilst believed to be accurate are set out as a general outline only for guidance and do not constitute any part of an offer or contract. Intending purchasers should not rely on them as statements of representation of fact, but must satisfy themselves by inspection or otherwise as to their accuracy. We have not carried out a detailed survey nor tested the services, appliances and specific fittings. Room sizes should not be relied upon for carpets and furnishings. The measurements given are approximate. No person in this firm's employment has the authority to make or give any representation or warranty in respect of the property.

