



M

MADELEY RESIDENCES



FLOOR PLANS



M

MADELEY RESIDENCES

FLAT SEVEN
FIRST & SECOND FLOOR

KITCHEN / DINING
4.09m x 2.57m/13'5" x 8'5"

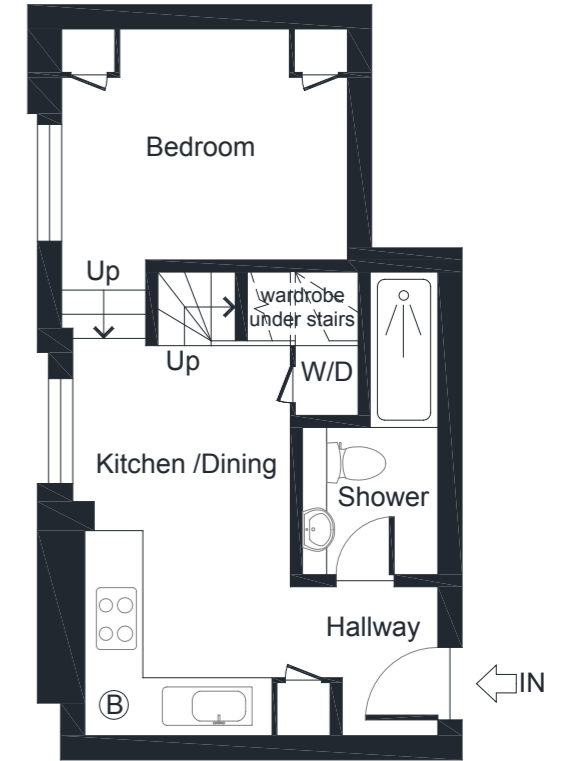
LIVING
5.10m x 3.30m/16'9" x 10'7"

BEDROOM
3.00m x 2.44m/9'10" x 8'0"

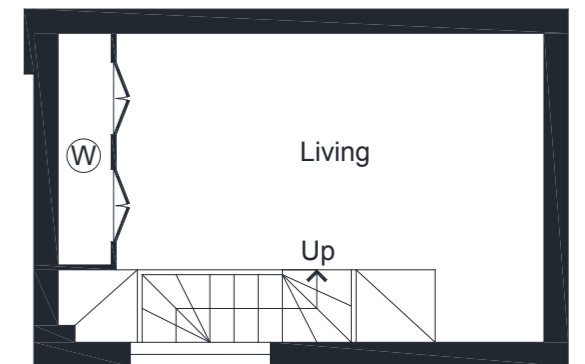
SHOWER
3.18m x 1.42m/10'5" x 4'8"

HALLWAY
1.55m x 1.52m/5'1" x 5'0"

APPROX.
GROSS INTERNAL
FLOOR AREA
43 SQM / 460 SQ FT



FIRST FLOOR



SECOND FLOOR

luxgrove.homes

M

MADELEY RESIDENCES

FLAT EIGHT FIRST & SECOND FLOOR

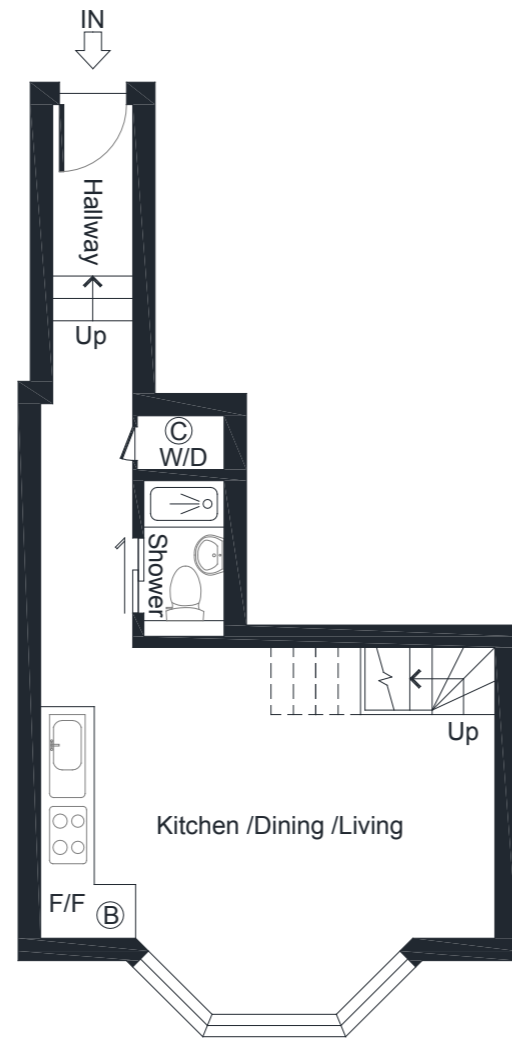
KITCHEN / LIVING / DINING
5.16m x 3.3m/16'9" x 10'8"

BEDROOM
5.16m x 3.3m/16'9" x 10'8"

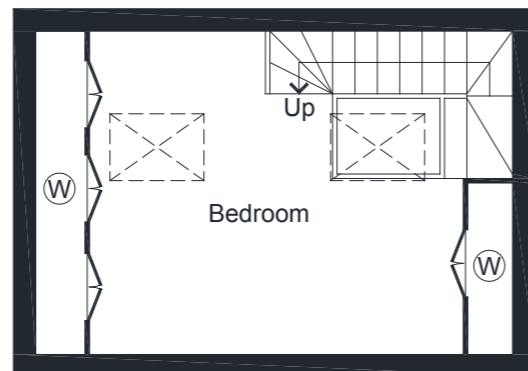
SHOWER
1.78m x 0.91m/5'10" x 3'0"

HALLWAY
6.17m x 1.04m/20'3" x 3'5"

APPROX.
GROSS INTERNAL
FLOOR AREA
43 SQM / 462 SQ FT



FIRST FLOOR



SECOND FLOOR

M

MADELEY RESIDENCES

FLAT NINE FIRST FLOOR

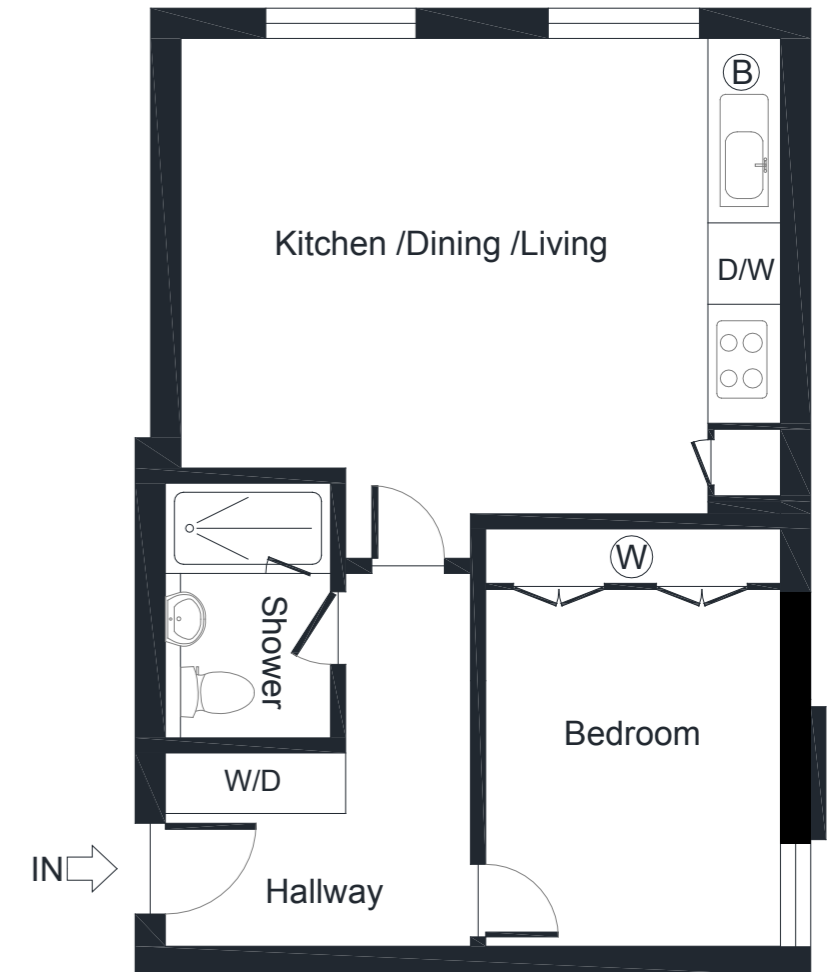
KITCHEN / LIVING / DINING
5.03m x 3.99m/16'6" x 13'1"

BEDROOM
3.51m x 2.46m/11'6" x 8'1"

SHOWER
2.13m x 1.40m/7'0" x 4'7"

HALLWAY
1.63m x 1.52m/5'4" x 5'0"

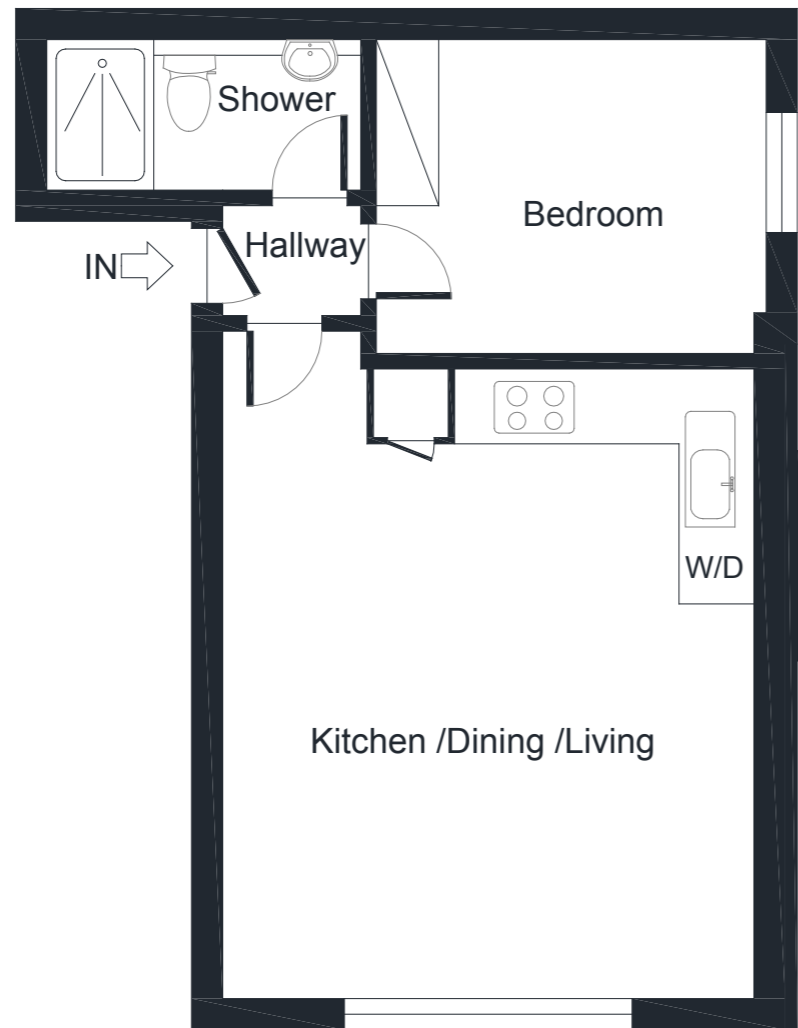
APPROX.
GROSS INTERNAL
FLOOR AREA
39 SQM / 419 SQ FT



luxgrove.homes

M

MADELEY RESIDENCES



FLAT TEN FIRST FLOOR

KITCHEN / LIVING / DINING
5.44m x 4.32m/17'10" x 14'2"

BEDROOM
3.18m x 2.57m/10'5" x 8'5"

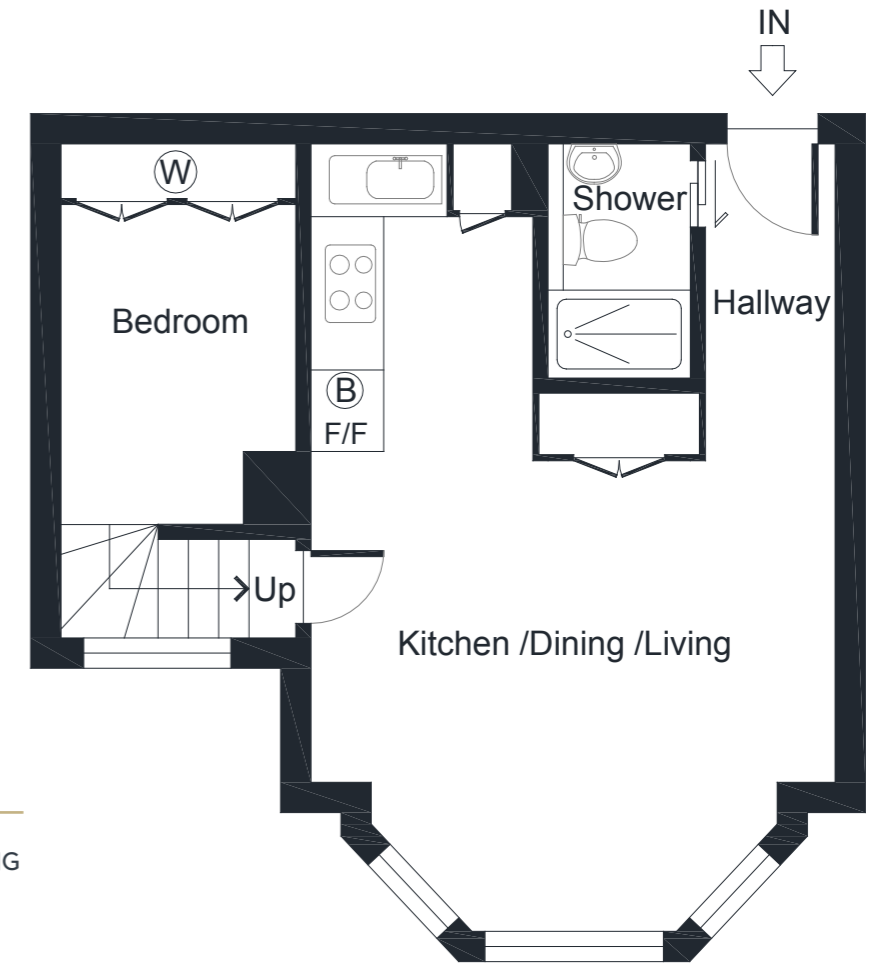
SHOWER
2.57m x 1.22m/8'5" x 4'0"

HALLWAY
1.12m x 0.89m/3'8" x 2'11"

APPROX.
GROSS INTERNAL
FLOOR AREA
36 SQM / 385 SQ FT

M

MADELEY RESIDENCES



FLAT ELEVEN FIRST FLOOR

KITCHEN / LIVING / DINING
6.60m x 4.39m/21'8" x 14'5"

BEDROOM
3.18m x 1.96m/10'5" x 6'5"

SHOWER
1.96m x 1.19m/6'5" x 3'11"

HALLWAY
2.67m x 1.09m/8'9" x 3'7"

APPROX.
GROSS INTERNAL
FLOOR AREA
36 SQM / 384 SQ FT

luxgrove.homes

M

MADELEY RESIDENCES



FLAT TWELVE SECOND FLOOR

KITCHEN

2.57m x 1.65m/8'5" x 5'5"

LIVING ROOM

4.39m x 3.86m/14'5" x 12'8"

BEDROOM

2.57m x 2.34m/8'5" x 7'8"

BATHROOM

2.13m x 1.24m/7'0" x 4'1"

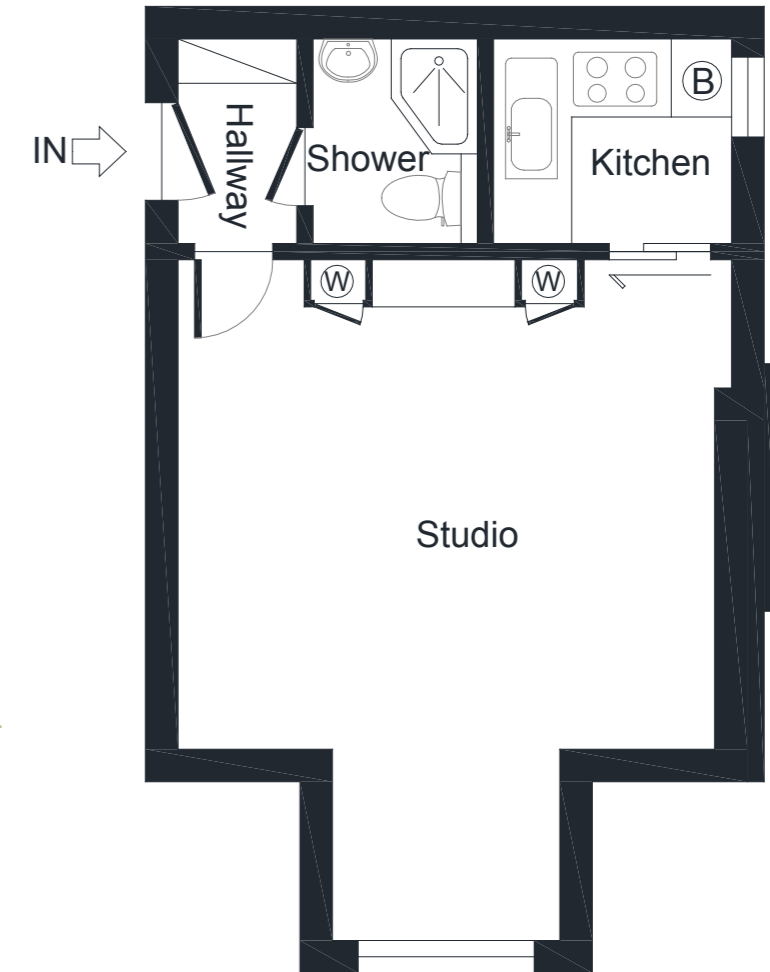
HALLWAY

2.69m x 1.02m/8'10" x 3'4"

**APPROX.
GROSS INTERNAL
FLOOR AREA
36 SQM / 389 SQ FT**

M

MADELEY RESIDENCES



FLAT THIRTEEN SECOND FLOOR

STUDIO

5.31m x 4.32m/17'5" x 14'2"

KITCHEN

1.85m x 1.60m/6'1" x 5'3"

SHOWER

1.60m x 1.27m/5'3" x 4'2"

HALLWAY

1.60m x 0.91m/5'3" x 3'0"

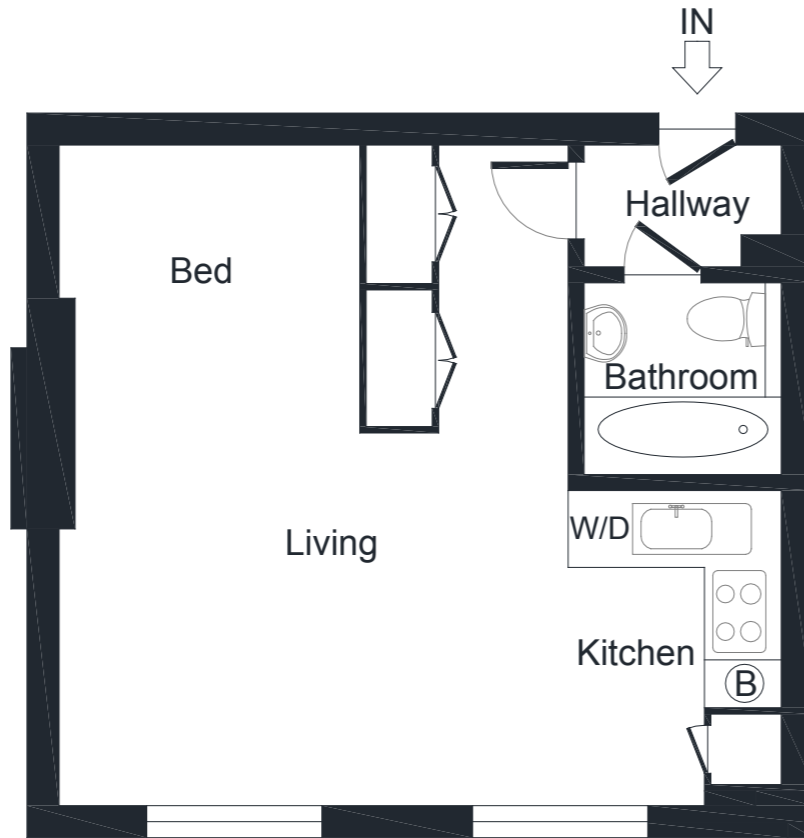
**APPROX.
GROSS INTERNAL
FLOOR AREA
28 SQM / 301 SQ FT**

luxgrove.homes

INFO@LUXGROVE.COM

M

MADELEY RESIDENCES



FLAT FOURTEEN

SECOND FLOOR

STUDIO
5.74m x 5.23m/18'10" x 17'2"

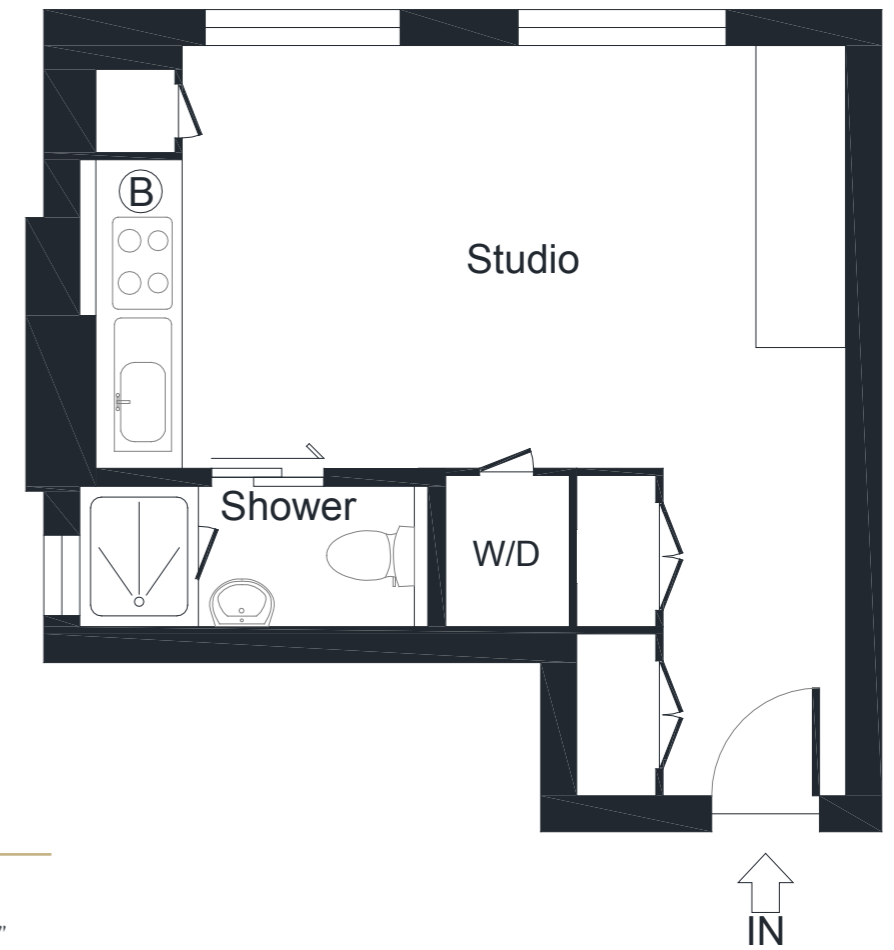
BATHROOM
1.57m x 1.52m/5'2" x 5'0"

HALLWAY
1.57m x 0.97m/5'2" x 3'2"

APPROX.
GROSS INTERNAL
FLOOR AREA
30 SQM / 323 SQ FT

M

MADELEY RESIDENCES



FLAT FIFTEEN

SECOND FLOOR

STUDIO
5.31m x 5.31m/17'5" x 17'5"

SHOWER
2.46m x 0.99m/8'1" x 3'3"

APPROX.
GROSS INTERNAL
FLOOR AREA
24 SQM / 262 SQ FT

luxgrove.homes

M

MADELEY RESIDENCES

SPECIFICATION

- Curated and designed by top interior designers Studio Iro
- Built in joinery including bespoke wardrobes, vanity units and TV units (to selected flats)
- Bespoke, fully integrated kitchens. Kitchens equipped with integrated appliances, Smeg sinks and taps with composite stone worktops and splashbacks
- Luxurious marble bathrooms fitted with designer sanitary ware, frameless glass shower screens, built in vanity units
- New double-glazed sash windows throughout
- Energy efficient Vaillant boilers and gas central heating
- Wiring for fibre Virgin broadband
- Wiring for Sky +
- Isolated acoustic structures for improved sound insulation between apartments
- Waterproofing membrane to all walls and floors to help protect against the risk of water damage between apartments

Help to Buy available on selected units.

The photos in this brochure are from another recent development by the developer and are not actual shots of this property. These photos are for illustrative purposes only.

MISREPRESENTATION ACT: These particulars are not to be considered as a formal offer, they are for information only and give a general idea of the property. They are not to be taken as forming any part of a resulting contract, nor to be relied upon as statements or representations of fact. Whilst every care has been taken in their preparation, no liability can be accepted for their inaccuracy. Intending purchasers must satisfy themselves by personal inspection or otherwise as to the correctness of these particulars which are issued on the understanding that all negotiations are conducted through the developer or its agent. In view of our continuing aim to improve our developments the detailed specification and/or layouts may change.



luxgrove.homes

INFO@LUXGROVE.COM

M

MADELEY RESIDENCES

luxgrove.homes