



Seymour Lodge

Seymour Lodge
Private

Websters
estate agents

Seymour Road, Hampton Wick, KT1 4HY

Ground Floor 1 bedroom apartment in a well maintained development with a Share of Freehold, secure entry phone access and communal gardens. Situated just 0.1 mile from Hampton Wick Village shops and train station, 0.4 miles from Kingston town centre and 0.7 miles from Kingston mainline train station.

With no onward chain and tastefully presented to offer 588 sq ft of well balanced living space with modern fixtures, fittings and floorings, large double glazed windows and doors and neutral decor throughout.

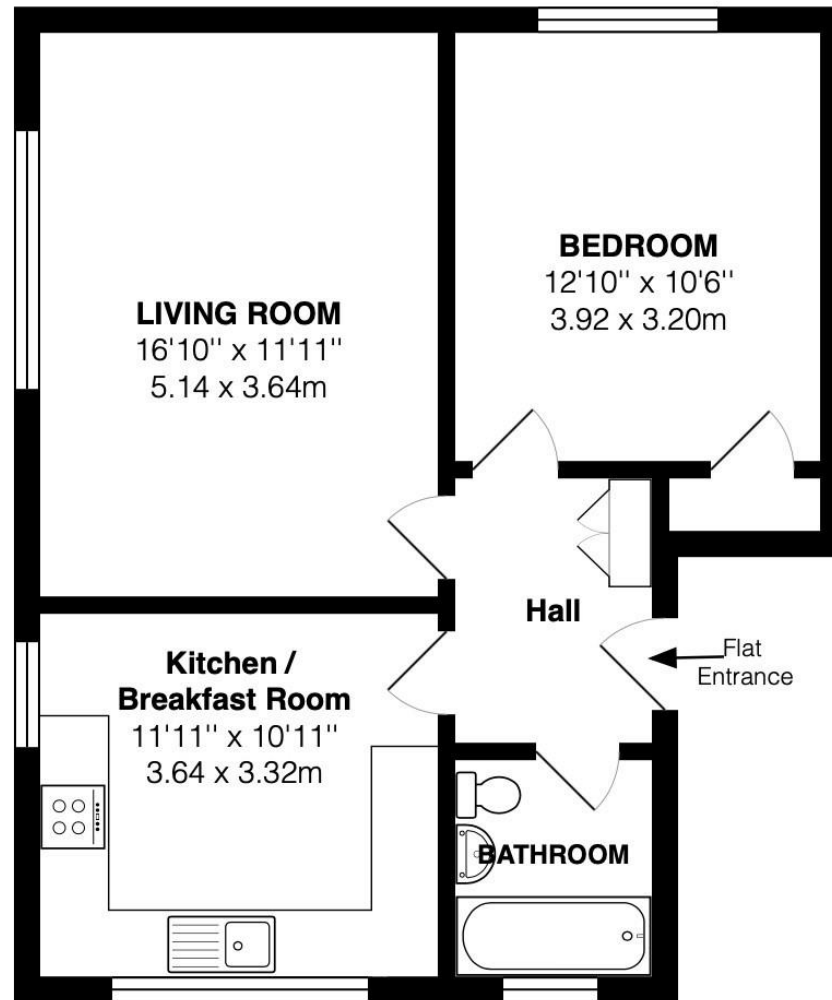
Entrance hallway leads to the double bedroom with built in storage, the bathroom, the spacious living/dining room and the separate fitted kitchen/breakfast room.

Located less than 0.4 miles from Bushy Park, Home Park and the River Thames with towpath walks towards Hampton Court Palace and Richmond upon Thames.

EPC Rating D

- Ground Floor 1 Bedroom Apartment
- Share of Freehold and No Chain
- Communal Gardens
- 588 Sq Ft of Living Space
- Living Room and Separate Kitchen/Breakfast Room
- Tastefully Presented Throughout
- 0.1 Mile from Hampton Wick Station





TOTAL FLOOR AREA approx.= 588 Sq.Feet (54.66 sq.metres)

a Websters Estate Agents 36 Broad Street, Teddington, Middlesex TW11 8QY t 020 8614 6000 e sales@mywebsters.co.uk w mywebsters.co.uk

Disclaimer
These particulars, whilst believed to be accurate are set out as a general outline only for guidance and do not constitute any part of an offer or contract. Intending purchasers should not rely on them as statements of representation of fact, but must satisfy themselves by inspection or otherwise as to their accuracy. We have not carried out a detailed survey nor tested the services, appliances and specific fittings. Room sizes should not be relied upon for carpets and furnishings. The measurements given are approximate. No person in this firm's employment has the authority to make or give any representation or warranty in respect of the property.

