



Websters
estate agents

Strafford Road ,Twickenham,TW1 3AE

Second Floor 2 double bedroom apartment in an attractive detached property with a Share of Freehold, secure access and use of communal bike and basement storage. Situated in a popular residential area less than 0.4 miles from Twickenham town centre, mainline train Station, Church Street and Thames Riverside with a walking/bike track past Marble Hill Park to Richmond.

Immaculately presented to offer 808 sq ft of well proportioned living space with a stylish recently fitted kitchen, modern fixtures and fittings, wood style flooring, double glazed windows, a study room and hatch access to loft storage.

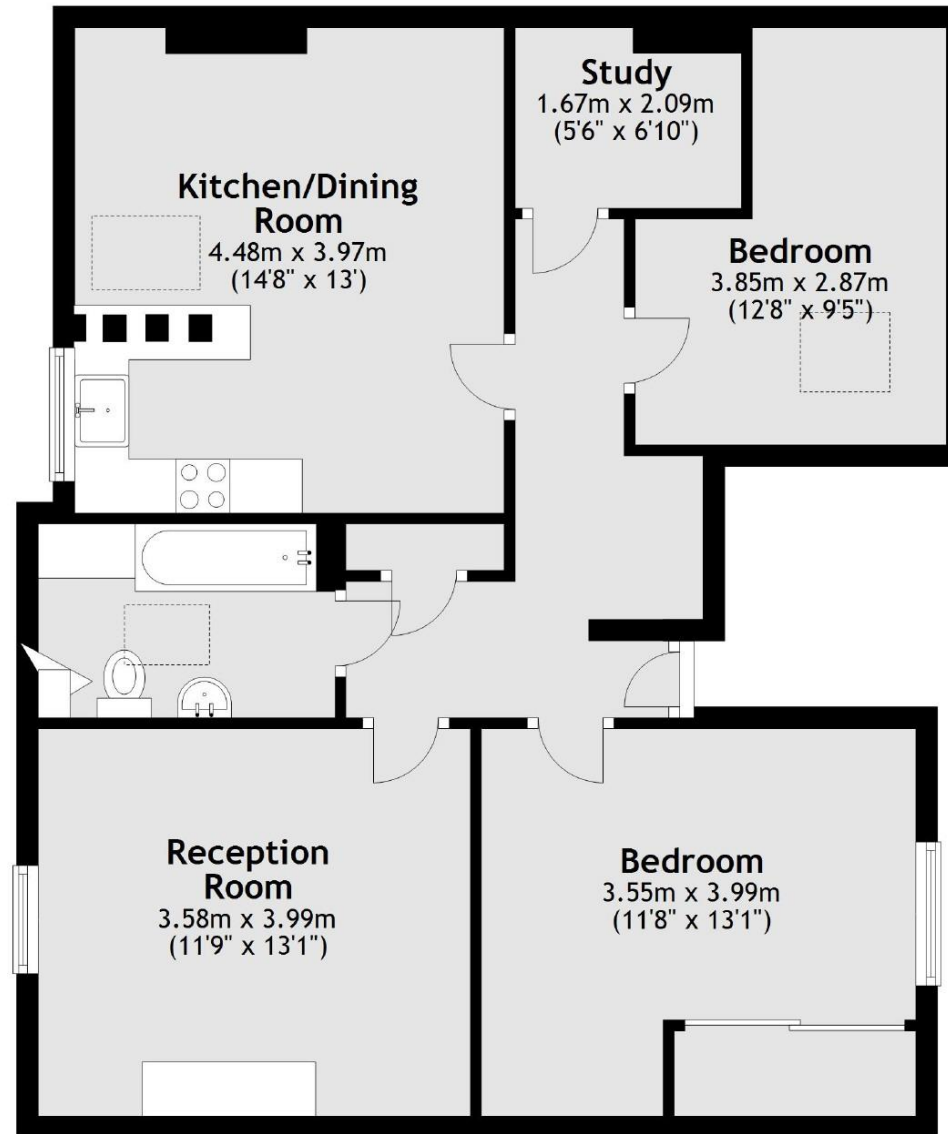
The spacious entrance hallway with storage leads to the 2 bedrooms, the study room, the family bathroom, the kitchen/dining room and the separate living room.

Located 0.2 miles from St Mary's and Orleans Schools and just 0.5 miles from St Margarets Village shops, cafes, restaurants and train station.
EPC Rating C

- Second Floor 2 Double Bedroom Apartment
- 808 Sq Ft of Living Space
- Share of Freehold
- Living Room and Separate Kitchen/Dining Room
- Study Room and Loft Storage
- Within 0.4 Miles of Twickenham Town Centre and Station
- 0.5 Miles from St Margarets Village and Station



Second Floor



Total area: approx. 75.1 sq. metres (808.5 sq. feet)

a Websters Estate Agents 36 Broad Street, Teddington, Middlesex TW11 8QY t 020 8614 6000 e sales@mywebsters.co.uk w mywebsters.co.uk

Disclaimer

These particulars, whilst believed to be accurate are set out as a general outline only for guidance and do not constitute any part of an offer or contract. Intending purchasers should not rely on them as statements of representation of fact, but must satisfy themselves by inspection or otherwise as to their accuracy. We have not carried out a detailed survey nor tested the services, appliances and specific fittings. Room sizes should not be relied upon for carpets and furnishings. The measurements given are approximate. No person in this firm's employment has the authority to make or give any representation or warranty in respect of the property.

