



Websters
estate agents

Uxbridge Road, Hampton Hill, TW12 1AY

Detached 4 bedroom Victorian family home on a 60 ft wide plot with in/out driveway parking for 4/5 cars, a garage and a beautiful 140ft+ garden. Situated 0.5 miles from Hampton Hill Junior School and 0.8 miles from Buckingham Primary, Lady Eleanor Hollis and Hampton Boys Schools.

Attractive gable fronted property with period features, high ceilings and some original windows and doors. Currently offering 1851 sq ft of living space over 2 floors with potential to re configure the layout and extend (subject to Planning Permission and Building Regulations) to create a stunning bespoke family home.

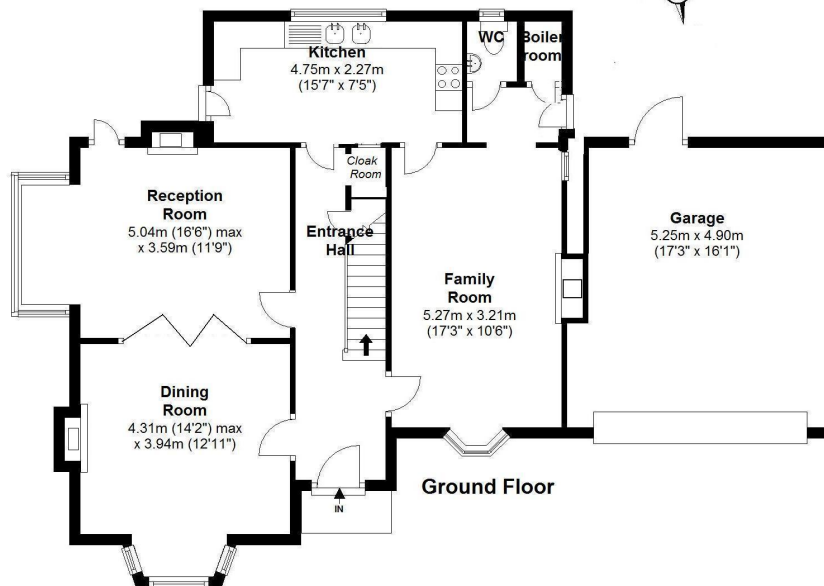
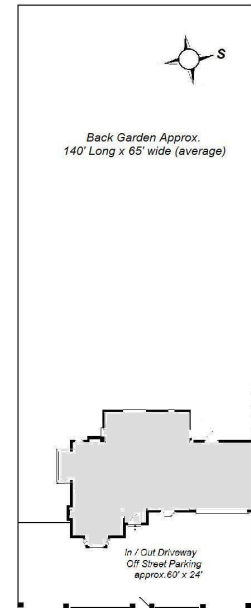
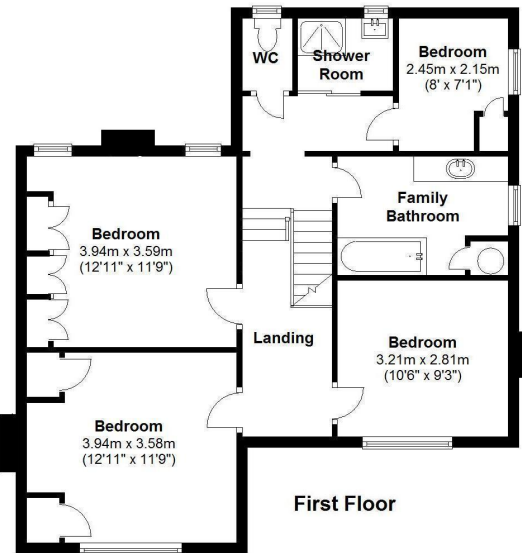
The large entrance hallway leads to the bay fronted living room with folding doors opening between 2 rooms to create a huge triple aspect living space with access onto the garden. Further doors lead to the fitted kitchen at the rear and the family room with a feature fireplace and lobby access to a w.c and a boiler room. Doors in the lobby and kitchen open onto the stunning garden with mature planting, an extensive lawn, a large workshop, shed storage and rear access to the garage.

On the first floor are 4 bedrooms, the family bathroom, a shower room, separate w.c and access to loft storage.

Located 0.5 miles from the A316 with direct access to the M3/M25 and into central London and 0.8 miles from Hampton Hill High Street and Bushy Park.
EPC E

- Detached 4 Bedroom Victorian Home
- Driveway Parking for 4/5 Cars and Garage
- Substantial Plot with 140 Ft Rear Garden
- 3 Living Rooms and Separate Kitchen
- Potential to Extend and Re-Configure Layout
- 1851 Sq Ft Living Space over 2 Floors
- Less than 0.8 Miles from Hampton Hill High Street





Total Floor Area approx.= 1,851 Sq.Feet (172 sq.metres)
{ includes Garage}

Uxbridge Road, Hampton

a Websters Estate Agents 36 Broad Street, Teddington, Middlesex TW11 8QY

t 020 8614 6000

e sales@mywebsters.co.uk w mywebsters.co.uk

Disclaimer

These particulars, whilst believed to be accurate are set out as a general outline only for guidance and do not constitute any part of an offer or contract. Intending purchasers should not rely on them as statements of representation of fact, but must satisfy themselves by inspection or otherwise as to their accuracy. We have not carried out a detailed survey nor tested the services, appliances and specific fittings. Room sizes should not be relied upon for carpets and furnishings. The measurements given are approximate. No person in this firm's employment has the authority to make or give any representation or warranty in respect of the property.

