



Jasmine Court
75 Main Street

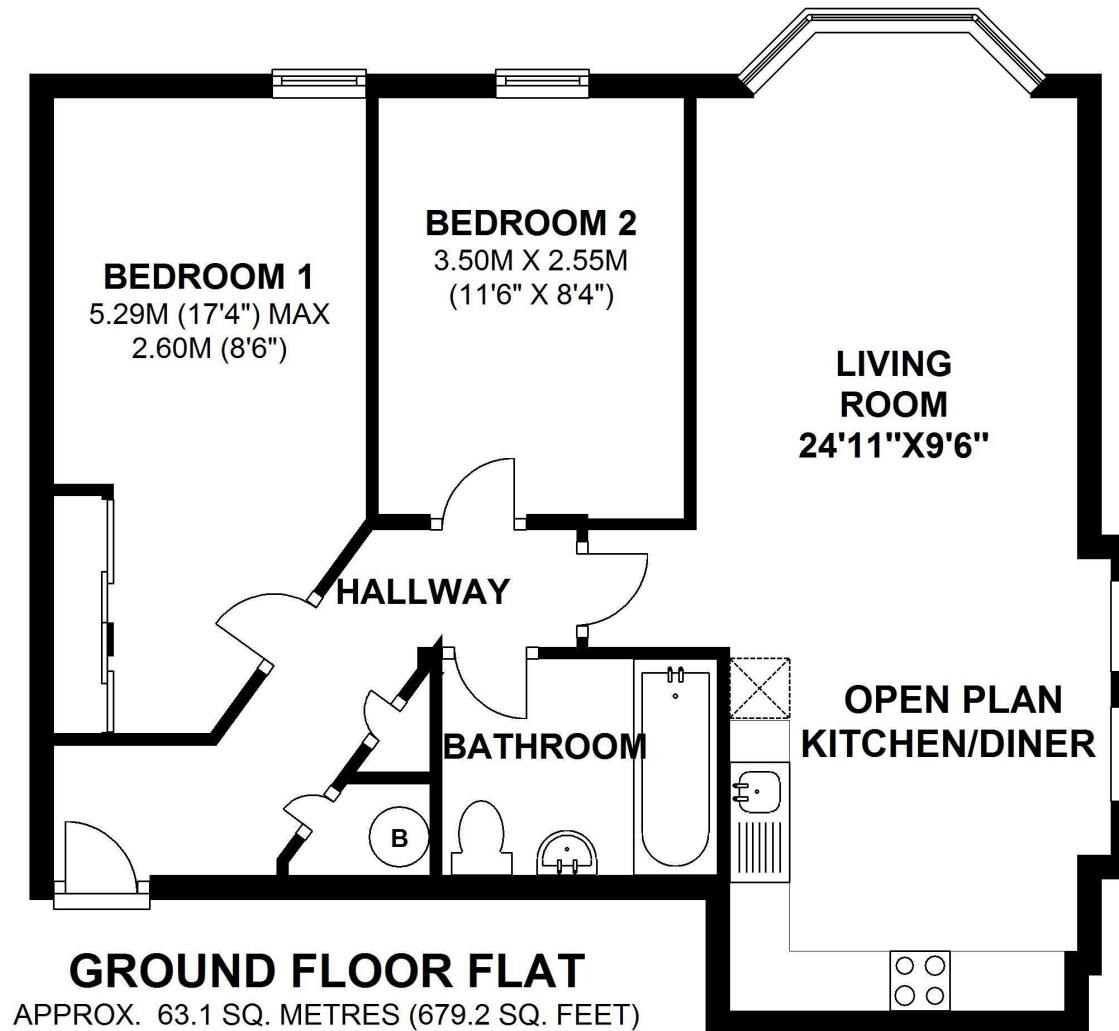
Websters
estate agents

Main Street, Hanworth, TW13 6SY

A superbly presented, ground floor 2 double bedroom apartment. This most appealing property forms part of a modern purpose built development, less than 6 years old. The property is extremely light and spacious throughout, especially the living room which has a double aspect view. The bedrooms are both doubles and the white bathroom suite is immaculate. The spacious open plan kitchen/diner will comfortably seat 4 people.

- Ground Floor
- 2 Double Bedrooms
- Modern Development less than 6 Years Old
- Gas Heating & Double Glazing
- Immaculate White Bathroom Suite
- Open Plan Kitchen/Diner
- Allocated Off Street Parking
- Security Entry Phone System





TOTAL AREA: APPROX. 63.1 SQ. METRES (679.2 SQ. FEET)

a Websters Estate Agents 36 Broad Street, Teddington, Middlesex TW11 8QY **t** 020 8614 6000 **e** sales@mywebsters.co.uk **w** mywebsters.co.uk

Disclaimer
These particulars, whilst believed to be accurate are set out as a general outline only for guidance and do not constitute any part of an offer or contract. Intending purchasers should not rely on them as statements of representation of fact, but must satisfy themselves by inspection or otherwise as to their accuracy. We have not carried out a detailed survey nor tested the services, appliances and specific fittings. Room sizes should not be relied upon for carpets and furnishings. The measurements given are approximate. No person in this firm's employment has the authority to make or give any representation or warranty in respect of the property.

