



Websters  
estate agents

# Brinsworth Close, Twickenham, TW2 5BS

Mid Terrace 2 double bedroom home with a west facing garden with no onward chain in a popular residential cul-de-sac. Situated 0.3 miles from Twickenham Green, local shops, cafes and restaurants and within 0.6 miles of Archdeacon, Trafalgar, St James, TPA and Waldegrave Girls/Co-ed Sixth Form.

Immaculately presented to offer 819 sq ft of living space over 2 floors with modern fixtures, fittings and floorings, large double glazed windows and doors and potential to loft convert (subject to Planning Permission and Building Regulations)

Entrance hallway leads to the open plan living room with space for seating, dining and an understairs study area. A door opens into the kitchen/breakfast room with a tiled floor, stylish fitted units and double doors onto the low maintenance garden with gated rear access. On the first floor are 2 double bedrooms both with built in storage and the family bathroom.

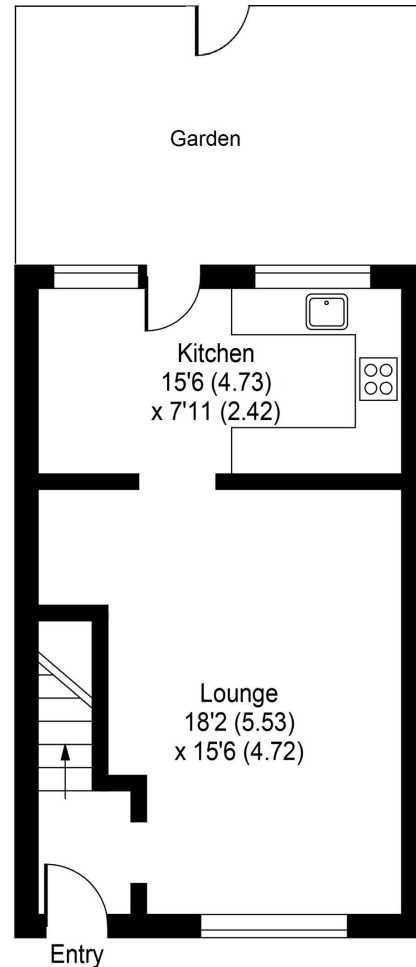
Located 0.5 miles from Kneller Gardens with a walking/cycle track along the River Crane to Crane Park and into Twickenham and within 0.8 miles of Strawberry Hill and Whitton train stations.

EPC Rating C

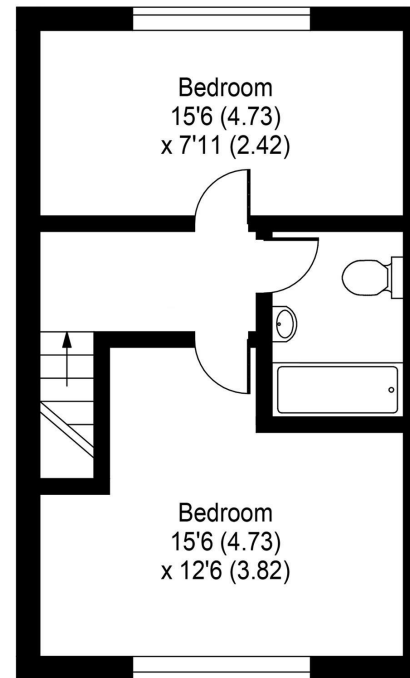
- Mid Terrace 2 Double Bedroom Home
- Private West Facing Garden
- No Onward Chain
- Potential to Loft Convert (stpp)
- Popular Residential Cul-de-Sac
- 0.3 Miles from Twickenham Green
- Within 0.6 Miles of Popular Schools



# 12 Brinsworth Close, Twickenham, TW2 5BS



**GROUND FLOOR**



**FIRST FLOOR**

Approximate Area = 819 sq ft / 76.14 sq m

**a** Websters Estate Agents 36 Broad Street, Teddington, Middlesex TW11 8QY    **t** 020 8614 6000    **e** sales@mywebsters.co.uk    **w** mywebsters.co.uk

**Disclaimer**

These particulars, whilst believed to be accurate are set out as a general outline only for guidance and do not constitute any part of an offer or contract. Intending purchasers should not rely on them as statements of representation of fact, but must satisfy themselves by inspection or otherwise as to their accuracy. We have not carried out a detailed survey nor tested the services, appliances and specific fittings. Room sizes should not be relied upon for carpets and furnishings. The measurements given are approximate. No person in this firm's employment has the authority to make or give any representation or warranty in respect of the property.

