



Websters
estate agents
01203 888010
www.websters.co.uk
For Sale

Websters
estate agents

Andover Road, Twickenham, TW2 6PD

Mid Terrace 2 bedroom Victorian home in a highly regarded residential location. Situated just 0.3 miles from Twickenham Green, local shops, cafes and restaurants and within 0.4 miles of Archdeacon, TPA and Trafalgar Primary Schools and 0.6 miles from St Richard Reynolds and Waldegrave Girls/Co-ed Sixth Form.

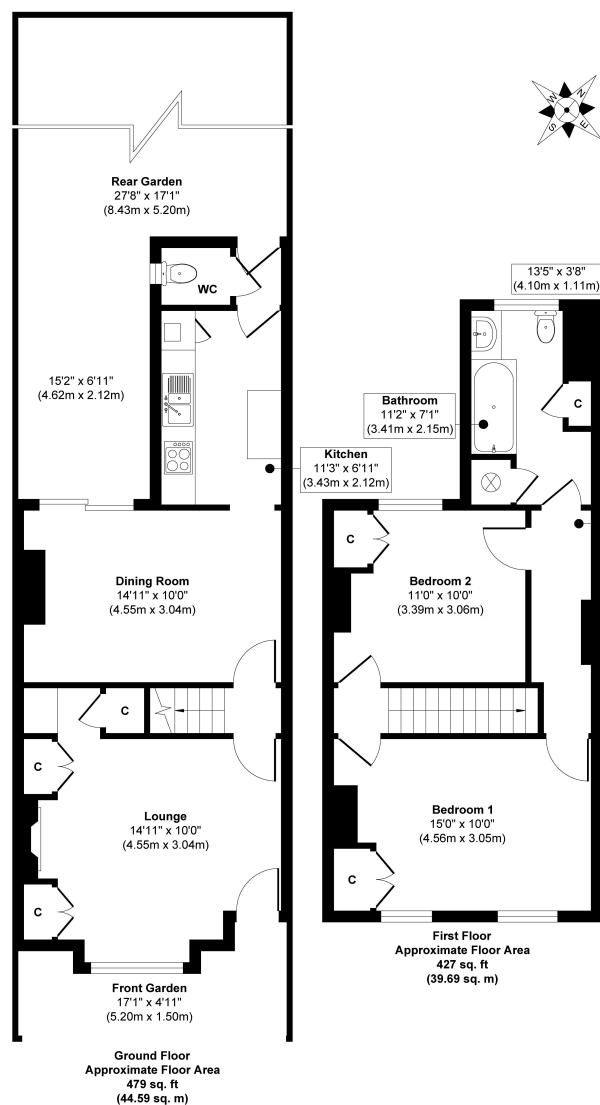
In need of some updating but tastefully presented to offer 906 sq ft of well balanced living space over 2 floors with potential to extend, reconfigure the layout and loft convert to create a bespoke family home (subject to Planning Permission and Building Regulations)

Front door opens into the bay fronted living with built in storage, a feature fireplace and door into the dining room at the rear. This spacious room overlooks the garden and has access to the kitchen and a w.c. Sliding doors open onto the paved rear garden with shed storage and mature planting. On the first floor are 2 double bedrooms, the family bathroom and hatch access to loft storage.

Located 0.1 mile from Kneller Gardens with a walking and cycle track along the River Crane to Crane Park and Twickenham Station and 0.7 miles from Strawberry Hill train station. EPC Rating D

- Mid Terrace Victorian Home
- 2 Double Bedrooms and Upstairs Bathroom
- Potential to Extend and Loft Convert (stpp)
- Currently 906 Sq Ft of Living Space over 2 Floors
- 2 Living Rooms and Separate Kitchen
- Within 0.6 Miles of Popular Schools
- Under 1 Mile from Twickenham and Strawberry Hill Stations





Approx. Gross Internal Floor Area 906 sq. ft / 84.28 sq. m

Illustration for identification purposes only, measurements are approximate, not to scale.
Produced by Elements Property

a Websters Estate Agents 36 Broad Street, Teddington, Middlesex TW11 8QY

t 020 8614 6000

e sales@mywebsters.co.uk **w** mywebsters.co.uk

Disclaimer

These particulars, whilst believed to be accurate are set out as a general outline only for guidance and do not constitute any part of an offer or contract. Intending purchasers should not rely on them as statements of representation of fact, but must satisfy themselves by inspection or otherwise as to their accuracy. We have not carried out a detailed survey nor tested the services, appliances and specific fittings. Room sizes should not be relied upon for carpets and furnishings. The measurements given are approximate. No person in this firm's employment has the authority to make or give any representation or warranty in respect of the property.

