



Summer
Cottage

18

19

Websters
estate agents

First Cross Road, Twickenham, TW2 5QA

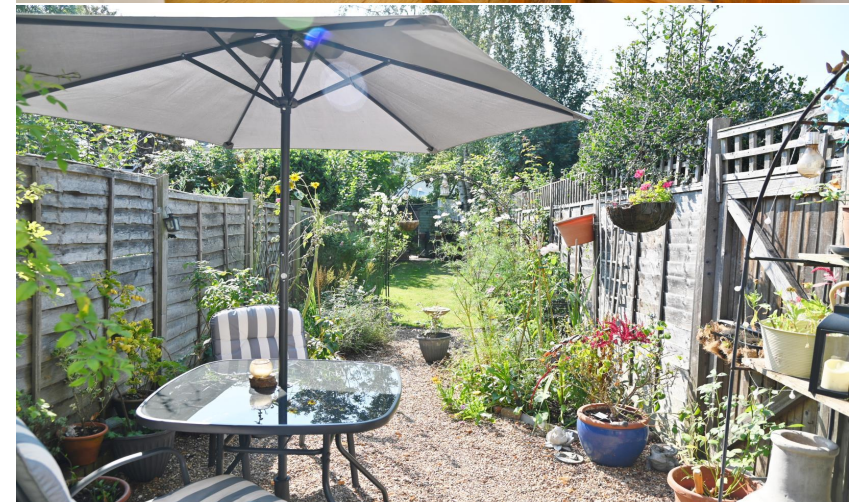
Mid Terrace 2 double bedroom Victorian 'Summer Cottage' directly overlooking Twickenham Green with a private front and lovely 77ft west facing garden. Situated just 0.1 mile from local shops, cafes and restaurants and only 0.5 miles from Strawberry Hill Station

Immaculately presented to offer 538 sq ft of living space over 2 floors with high specification fixtures, fittings and floorings, double glazed windows and doors, some plantation style shutters, charming period features and neutral decor throughout.

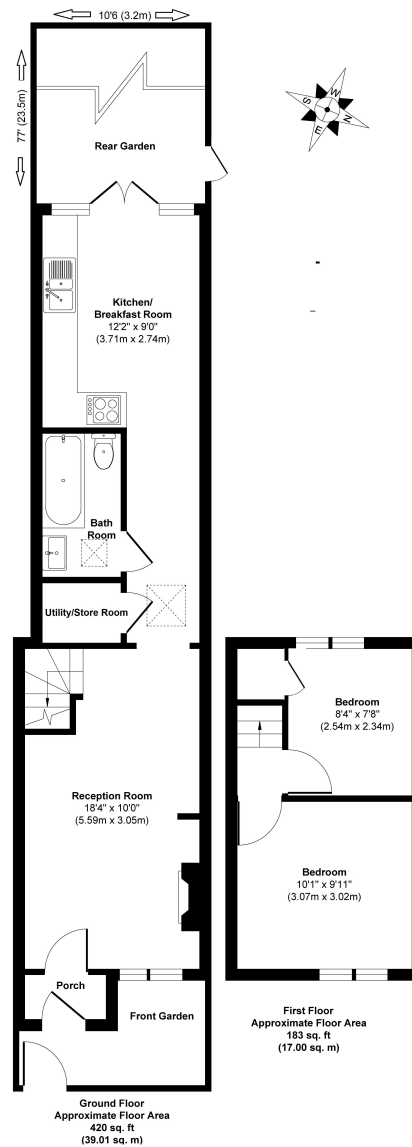
Recently built porch leads into the spacious open plan living room with a feature fireplace, built in storage, an understairs study area. At the rear is a hallway with a roof light and doors to the utility/storage room, the family bathroom and open access into the light filled kitchen/dining room at the rear. Doors open onto the larger than average garden with a patio, lawn, mature planting and space for a greenhouse and shed. On the first floor are 2 double bedrooms with built in wardrobes and hatch access to loft storage

Located within 0.3 miles of Archdeacon, Trafalgar, TPA and Kneller Gardens with a walking/cycle track along the River Crane to Crane Park and into Twickenham and within 0.9 miles of Twickenham mainline station.
EPC Rating C

- Mid Terrace Victorian 'Summer Cottage'
- Secluded 77Ft West Facing Garden
- 2 Double Bedrooms and Loft Storage
- Living Room, Kitchen/Dining Room and Utility Room
- Directly Overlooking Twickenham Green
- 0.1 Mile from Local Shops and Cafes
- 0.5 Miles from Strawberry Hill Station



Summer Cottage, First Cross Road



Approx. Gross Internal Floor Area 603 sq. ft / 56.01 sq. m

Illustration for identification purposes only, measurements are approximate, not to scale.
Produced by Elements Property

a Websters Estate Agents 36 Broad Street, Teddington, Middlesex TW11 8QY

t 020 8614 6000

e sales@mywebsters.co.uk **w** mywebsters.co.uk

Disclaimer

These particulars, whilst believed to be accurate are set out as a general outline only for guidance and do not constitute any part of an offer or contract. Intending purchasers should not rely on them as statements of representation of fact, but must satisfy themselves by inspection or otherwise as to their accuracy. We have not carried out a detailed survey nor tested the services, appliances and specific fittings. Room sizes should not be relied upon for carpets and furnishings. The measurements given are approximate. No person in this firm's employment has the authority to make or give any representation or warranty in respect of the property.

