



Websters
estate agents

Villiers Avenue, Twickenham, TW2 6BL

Semi Detached 4 bedroom home with driveway parking, a west facing garden and no onward chain. Situated in a quiet and highly regarded residential area only 0.2 miles from Crane Park, 0.3 miles from local shops and within 0.7 miles of Heathfield and Bishop Perrin Primary and Turing House School.

Extended at the rear and loft converted to offer 1222 sq ft of well proportioned living space over 2 floors with modern fixtures, fittings and floorings, double glazed windows and doors and potential to reconfigure the layout to create a stunning open plan kitchen/family room overlooking the garden.

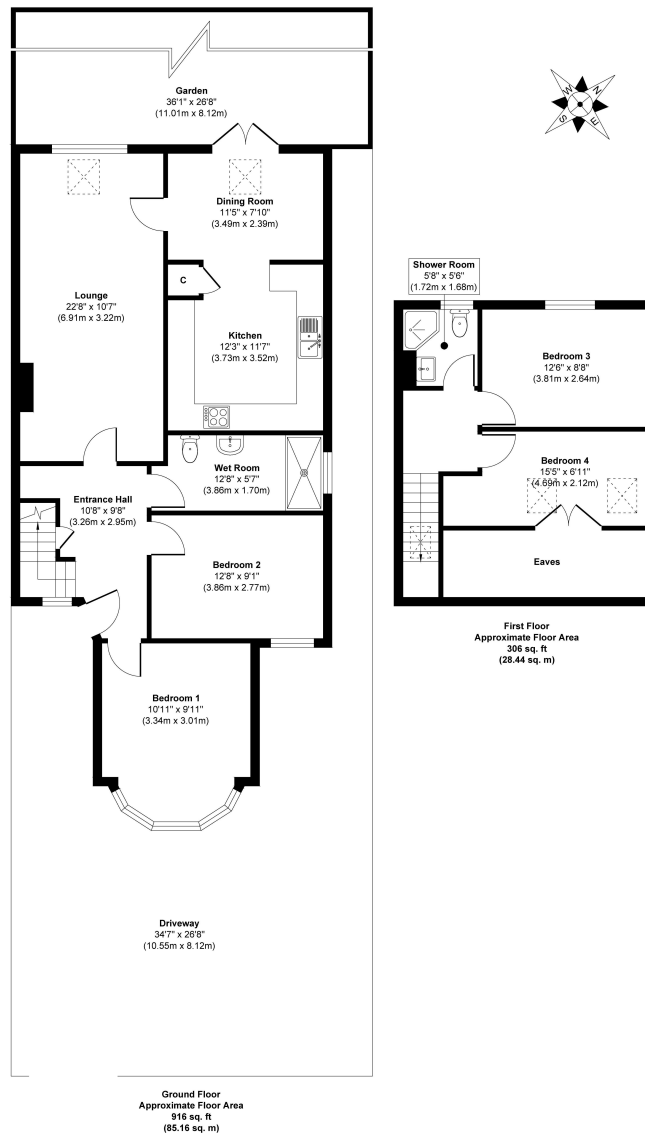
Front door opens into the hallway with access to 2 double bedrooms at the front, the spacious wetroom and the living room with a door into the dining room and fitted kitchen. Double doors open onto the garden with a patio, lawn, shed storage and side access with a secure storage area. On the first floor 2 bedrooms, eaves storage and a shower room.

Located within 1 mile of Whitton town centre shops, cafes, restaurants and mainline train station and just 0.7 miles from the A316 with direct access to the M3/M25 and into central London.

EPC Rating E

- Semi Detached 1222 Sq Ft Home
- 4 Bedrooms and 2 Bathrooms
- Driveway Parking and West Facing Garden
- No Onward Chain
- Well Balanced Living Space over 2 Floors
- 0.2 Miles from Crane Park
- Within 0.7 Miles of Popular Schools





Disclaimer

These particulars, whilst believed to be accurate are set out as a general outline only for guidance and do not constitute any part of an offer or contract. Intending purchasers should not rely on them as statements of representation of fact, but must satisfy themselves by inspection or otherwise as to their accuracy. We have not carried out a detailed survey nor tested the services, appliances and specific fittings. Room sizes should not be relied upon for carpets and furnishings. The measurements given are approxiamte. No person in this firms employment has the authority to make or give any representation or warranty in respect of the property.

