



Websters
estate agents

Wordsworth Road, Hampton, TW12 1EW

Mid Terrace 2 bedroom home with a south facing garden and a separate garage just 0.2 miles from bus stops towards Kingston and Heathrow and only 0.3 miles from Hampton Common Parkland.

With no onward chain, tastefully presented and offering 688 sq ft of well balanced living space over 2 floors with modern fixtures and fittings, double glazed windows and doors and potential to loft convert (subject to Planning Permission and Building Regulations)

Entrance hallway leads to storage, the fitted kitchen and the living/dining room at the rear. Patio doors open onto the south facing garden with a patio, lawn and gated rear access with a pathway leading to the garage block. On the first floor are 2 double bedrooms, the family bathroom and hatch access to loft storage.

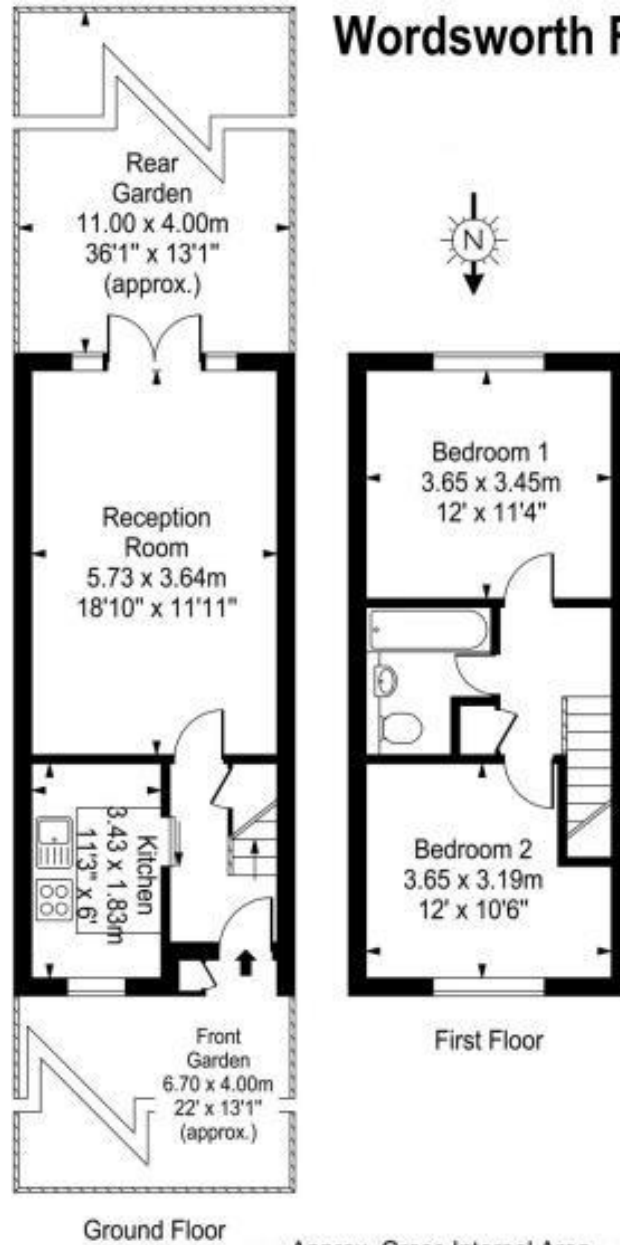
Situated 0.4 miles from Buckingham Primary and Hampton High Schools

EPC Rating E

- Mid Terrace 2 Bedroom Home
- South Facing Garden and Private Garage
- No Onward Chain
- Potential to Loft Convert (stpp)
- Open Plan Living Room and Separate Kitchen
- Popular Residential Location
- 0.2 Miles from Bus Stops



Wordsworth Road



Approx. Gross Internal Area
64 Sq M - 688 Sq Ft

a Websters Estate Agents 36 Broad Street, Teddington, Middlesex TW11 8QY t 020 8614 6000 e sales@mywebsters.co.uk w mywebsters.co.uk

Disclaimer

These particulars, whilst believed to be accurate are set out as a general outline only for guidance and do not constitute any part of an offer or contract. Intending purchasers should not rely on them as statements of representation of fact, but must satisfy themselves by inspection or otherwise as to their accuracy. We have not carried out a detailed survey nor tested the services, appliances and specific fittings. Room sizes should not be relied upon for carpets and furnishings. The measurements given are approximate. No person in this firm's employment has the authority to make or give any representation or warranty in respect of the property.

