



MANOR VALE  
TW8

£350,000

Brentford





**MANOR VALE,  
TW8**  
**£350,000**



Reception Room



Kitchen



Two Bedrooms



Bathroom



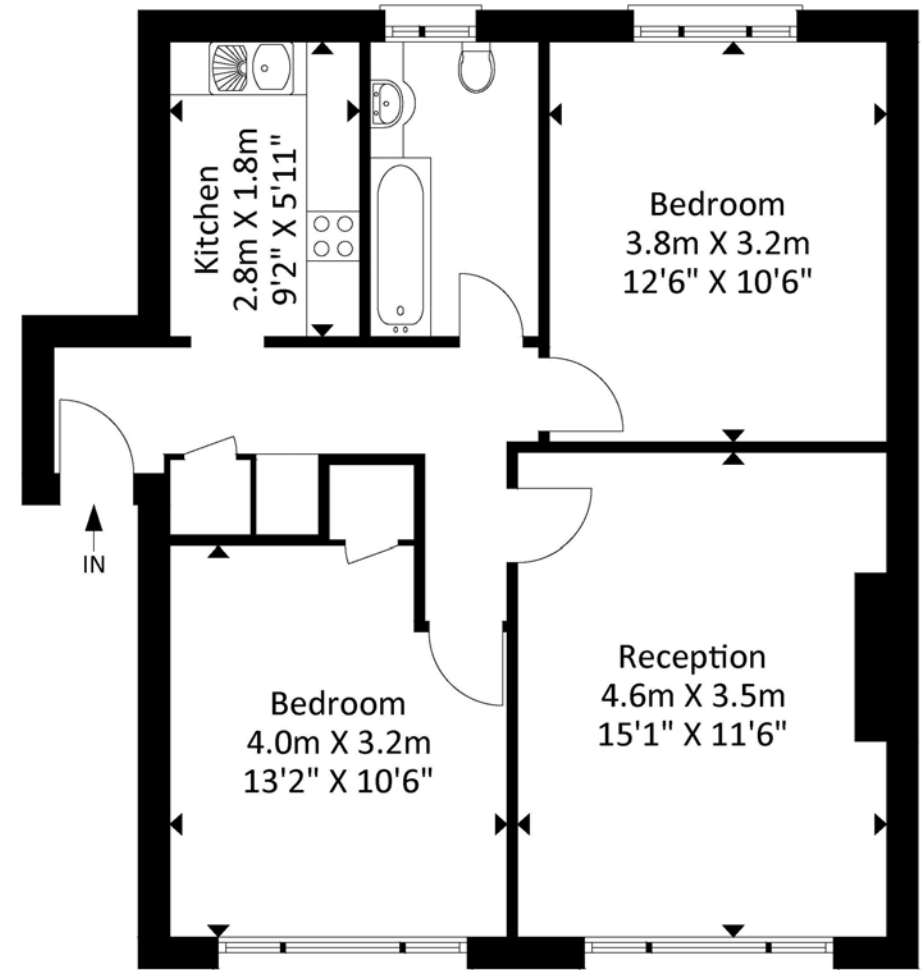
Residents Parking

This two bedroom flat is set in a purpose built Art-Deco style building and includes a communal garden. With its generously sized interiors, convenient location and potential to personalise to your own taste; we think that this property ticks all the boxes.

You won't have to travel far to find friendly neighbourhood shops as the locals tell us that the retailers clustered around both Brentford & Boston Manor Station are friendly as well as convenient spots to pick up some shopping.

EPC RATING: E  
LOCAL AUTHORITY: Hounslow  
COUNCIL TAX BAND: C  
TERM: 125 Years from December 1977

## Manor Vale



Second Floor  
Approximate Floor Area  
636.14 sq ft  
( 59.10 sq m)

Approximate Gross Internal Area = 59.10 sq m / 636.14 sq ft  
Illustration for identification purposes only, measurements are approximate, not to scale.

Your local independent  
award winning estate agents



## Northfields

130-132 Northfield Avenue,  
Ealing W13 9RT  
Sales: 020 8840 6666  
E: nasales@northfields.co.uk

020 8840 6666

[www.northfields.co.uk](http://www.northfields.co.uk)

**CONTACT**

*Us today*

TO FIND OUT

**MORE**