



3

09 0000

5

Websters
estate agents

Websters
estate agents

Crane Road, Twickenham, TW2 6RX

Attractive Mid Terrace 4 bedroom Victorian family home in a popular residential location with a west facing garden and home office. Situated just 0.2 miles from Twickenham Green, local shops, cafes and restaurants and less than 0.8 miles from Twickenham and Strawberry Hill train stations.

Extended, loft converted and refurbished by the current owners to offer an impressive and bespoke 1448 sq ft of living space over 3 floors (inc home office) with high specification fixtures, fittings and floorings, energy efficient heating, lighting and appliances, double glazed windows and doors, charming period features and neutral decor throughout.

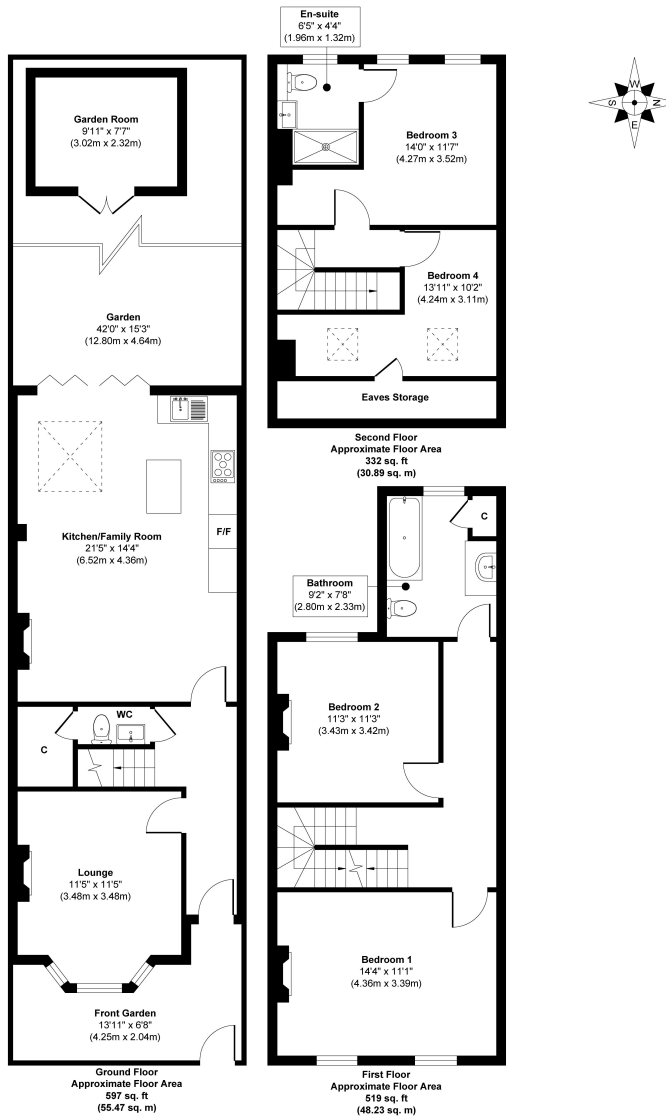
Entrance hallway leads to the bay fronted living room, the understairs w.c and the open plan kitchen/family room at the rear. This stunning light filled room has wooden flooring, a log burner, space for seating and dining and a stylish fitted kitchen. Folding doors open onto the garden with a large sun deck, lawn, purpose built home office and storage. On the first floor are 2 double bedrooms and the spacious family bathroom with a cupboard for the washing machine and dryer. Stairs lead up to the main bedroom with an en-suite shower room and a large single room with eaves storage which is ideal for use as walk in wardrobe/study or bedroom.

With residents permit parking and located less than 0.3 miles from Archdeacon and outstanding Twickenham Primary Academy, 0.5 miles from St Richard Reynolds and 0.8 miles from Waldegrave Girls School/Co-ed Sixth Form.

EPC Rating C

- Mid Terrace 4 Bedroom Home
- West Facing Garden with a Home Office
- 1448 Sq Ft of Living Space over 3 Floors
- High Specification Throughout
- Living Room and Large Kitchen/Family Room
- Within 0.8 Miles of Twickenham and Strawberry Hill Stations
- Close to Numerous Popular Schools





Approx. Gross Internal Floor Area 1448 sq. ft / 134.59 sq. m

Illustration for identification purposes only, measurements are approximate, not to scale.
Produced by Elements Property

a Websters Estate Agents 36 Broad Street, Teddington, Middlesex TW11 8QY

t 020 8614 6000

e sales@mywebsters.co.uk **w** mywebsters.co.uk

Disclaimer

These particulars, whilst believed to be accurate are set out as a general outline only for guidance and do not constitute any part of an offer or contract. Intending purchasers should not rely on them as statements of representation of fact, but must satisfy themselves by inspection or otherwise as to their accuracy. We have not carried out a detailed survey nor tested the services, appliances and specific fittings. Room sizes should not be relied upon for carpets and furnishings. The measurements given are approximate. No person in this firm's employment has the authority to make or give any representation or warranty in respect of the property.

