



Websters  
estate agents



# Cole Park Road, Twickenham, TW1 1JA

Open day viewings with closing date for all offers on 28th February 2014.

Attractive 1700 sq ft detached 1930s house with original period features. Bought off original plans and lived in by the same family ever since.

Now in need of complete modernisation and offering huge potential to become a spectacular family home by extending to the side/rear and loft converting (subject to planning permission and building regulations)

Original spacious entrance hall leads to the 2 reception rooms, kitchen at the rear with garden access and the downstairs w.c. Upstairs are 4 good sized bedrooms and the family bathroom.

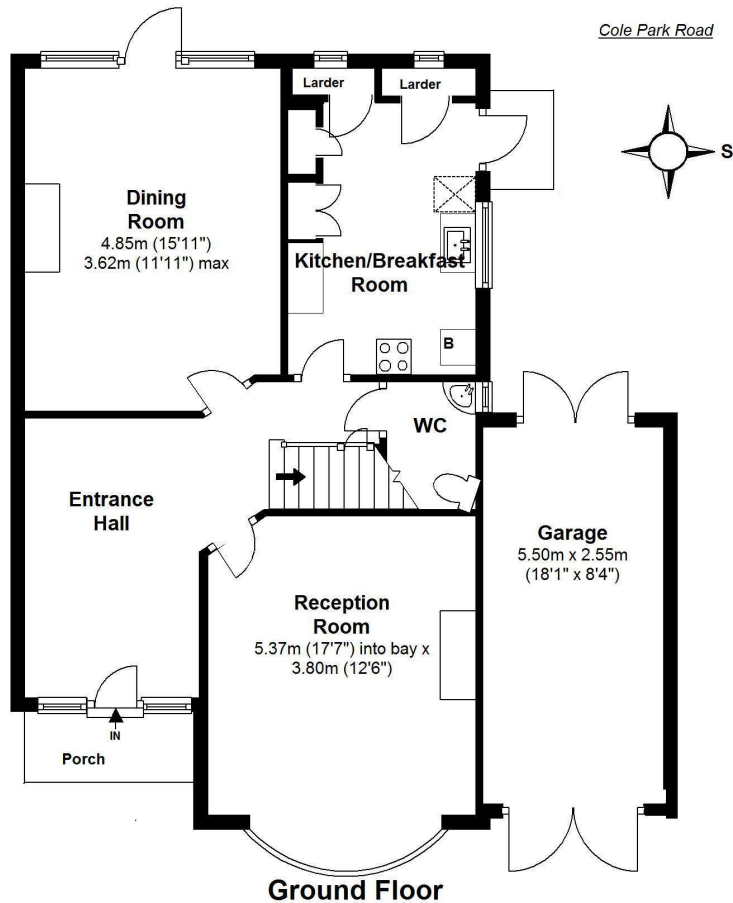
To the front of the property is a pretty garden, driveway parking, an integral garage and side access to the back garden.

Situated in a popular residential location just 0.8 miles from Twickenham mainline rail station/town and only 1.3 miles from Richmond town centre and the River Thames.

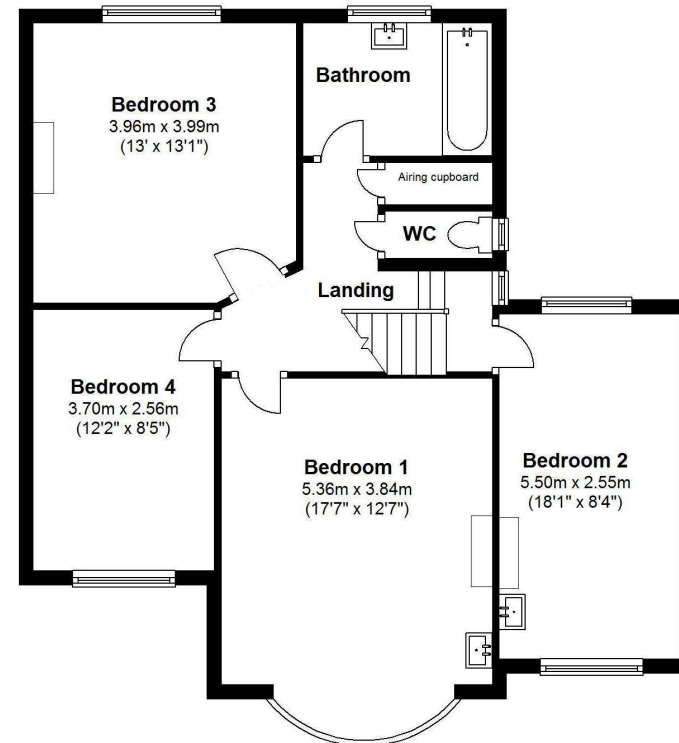
EPC Rating F

- Detached 1930s Family Home
- Requiring Complete Modernisation
- Large Entrance Hallway
- 2 Reception Rooms
- 4 Bedrooms
- Driveway Parking and Garage
- Potential to Extend and Loft Convert (stpp)





Floor area approx.= 886 Sq.Feet (82.29 sq.metres)



Floor area approx.= 814 Sq.feet (75.58 sq.metres)

Gross Floor area approx.=1,700 Sq.Feet (157.87 sq.metres)  
(includes Garage)

a Websters Estate Agents 36 Broad Street, Teddington, Middlesex TW11 8QY t 020 8614 6000 e sales@mywebsters.co.uk w mywebsters.co.uk

**Disclaimer**  
These particulars, whilst believed to be accurate are set out as a general outline only for guidance and do not constitute any part of an offer or contract. Intending purchasers should not rely on them as statements of representation of fact, but must satisfy themselves by inspection or otherwise as to their accuracy. We have not carried out a detailed survey nor tested the services, appliances and specific fittings. Room sizes should not be relied upon for carpets and furnishings. The measurements given are approximate. No person in this firm's employment has the authority to make or give any representation or warranty in respect of the property.



