



Websters
estate agents

Craneford Way, Twickenham, TW2 7SQ

First floor 2 bedroom purpose built maisonette with a private garden and views over open playing fields, in a popular residential location just 0.5 miles from Twickenham mainline train station.

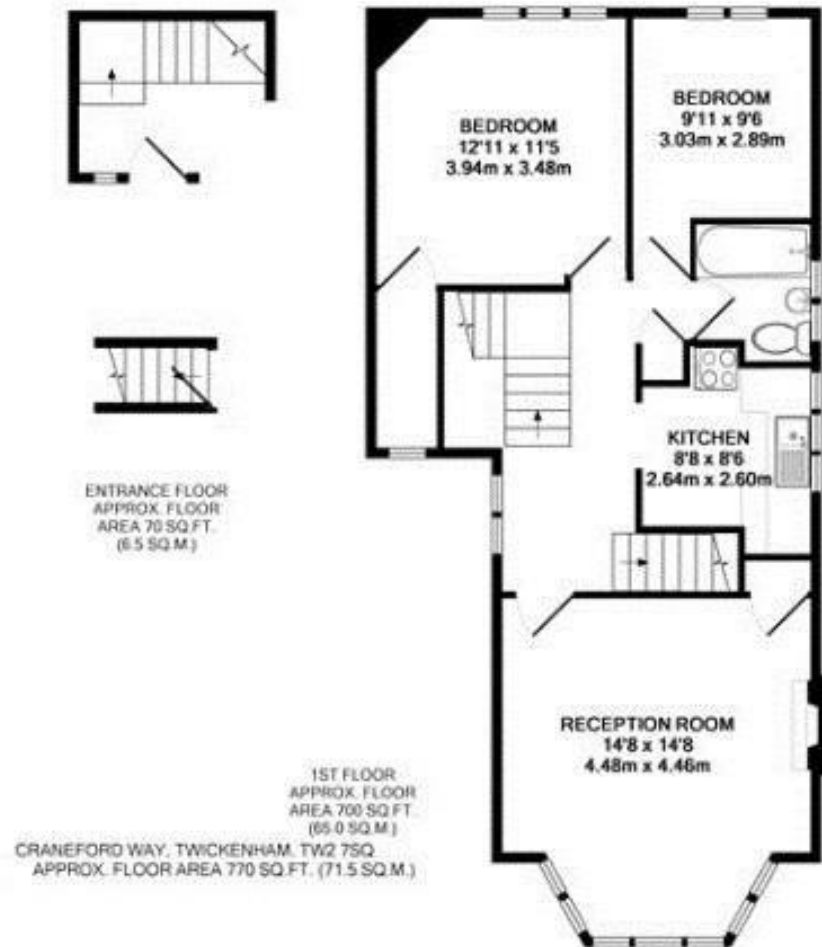
Superbly presented throughout, this delightful home offers in the region of 770 sq ft of well balanced living space with modern fixtures, fittings and flooring and pleasing light neutral décor.

Front entrance on the ground floor leads up stairs into the hallway. Doors open into the 2 double bedrooms, the spacious bay fronted living room, the luxury family bathroom and the fully fitted kitchen with a door to the external staircase which leads down to the private garden.

Only 0.6 miles from Twickenham town centre and the A316 with direct access to the M3/central London and just 1 mile from Marble Hill Park and the River Thames.
EPC Rating TBC

- First Floor Purpose Built Maisonette
- Private Rear Garden
- Beautifully Presented Throughout
- 2 Double Bedrooms
- Living Room and Seperate Kitchen
- Popular Twickenham Location
- 0.5 Miles from Twickenham Train Station





a Websters Estate Agents 36 Broad Street, Teddington, Middlesex TW11 8QY

t 020 8614 6000

e sales@mywebsters.co.uk w mywebsters.co.uk

Disclaimer

These particulars, whilst believed to be accurate are set out as a general outline only for guidance and do not constitute any part of an offer or contract. Intending purchasers should not rely on them as statements of representation of fact, but must satisfy themselves by inspection or otherwise as to their accuracy. We have not carried out a detailed survey nor tested the services, appliances and specific fittings. Room sizes should not be relied upon for carpets and furnishings. The measurements given are approximate. No person in this firm's employment has the authority to make or give any representation or warranty in respect of the property.

