



St Anns Park, Virginia Water, Surrey

£6,250 Per calendar month

BUCKINGHAM'S





**A well presented, spacious 4 bedroom detached house in the highly sought after St Ann's Park development. With a contemporary kitchen/dining/breakfast room and master en-suite, southerly facing garden, and access too communal facilities including tennis courts and swimming pool. Unfurnished. Council Tax Band H. EP**

Fees for tenants: Holding fee equivalent to one weeks rent, amendments to Tenancy Agreement after the document has been signed £50, change of sharer £50, stamp duty land tax (if total rent exceeds £125,000), 3% above the base rate of Bank of England per annum (calculated daily) for late/unpaid/returned rent payments, lost/damaged/broken keys/fobs or security devices at cost, deposit of five weeks rent if annual rent is less than £50,000 or six weeks rent if annual rent is £50,000 or more, all including VAT.

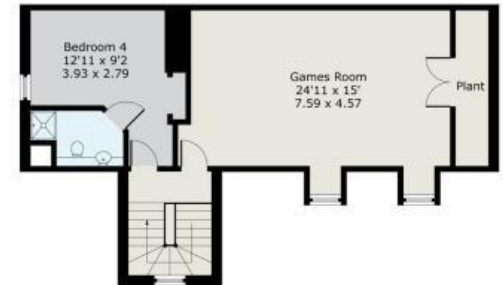
**4 Aspen Court, St Ann's Park, Virginia Water**

Approximate Gross Internal Floor Area :	
Ground Floor	165 sq m / 1780 sq ft
First Floor	98 sq m / 1055 sq ft
Second Floor	70 sq m / 757 sq ft
<b>Total</b>	<b>333 sq m / 3592 sq ft</b>

**Ground Floor**



**Second Floor**



**First Floor**



Ref: 4ACB012609142 Buckingham  
 HPI ©2014 Tel: 07814 00 77 21 matt@hollandphotoimaging.com  
 Not to Scale. Any Areas, measurements or distances given are maximum and approximate only, no decisions without checking should be made when reliant upon them.

6 Station Approach Virginia Water Surrey GU25 4DL  
 01344 845050  
 www.buckingham.com  
 lettings@buckingham.com

