



Websters  
estate agents

# Luther Road, Teddington, TW11 8PU

Mid Terrace 2 double bedroom Victorian family home with a loft/study room in a popular quiet residential cul de sac location only 0.2 miles from Teddington town centre shops, bars and restaurants, 0.4 miles from Teddington mainline train station and 0.6 miles from Bushy Park.

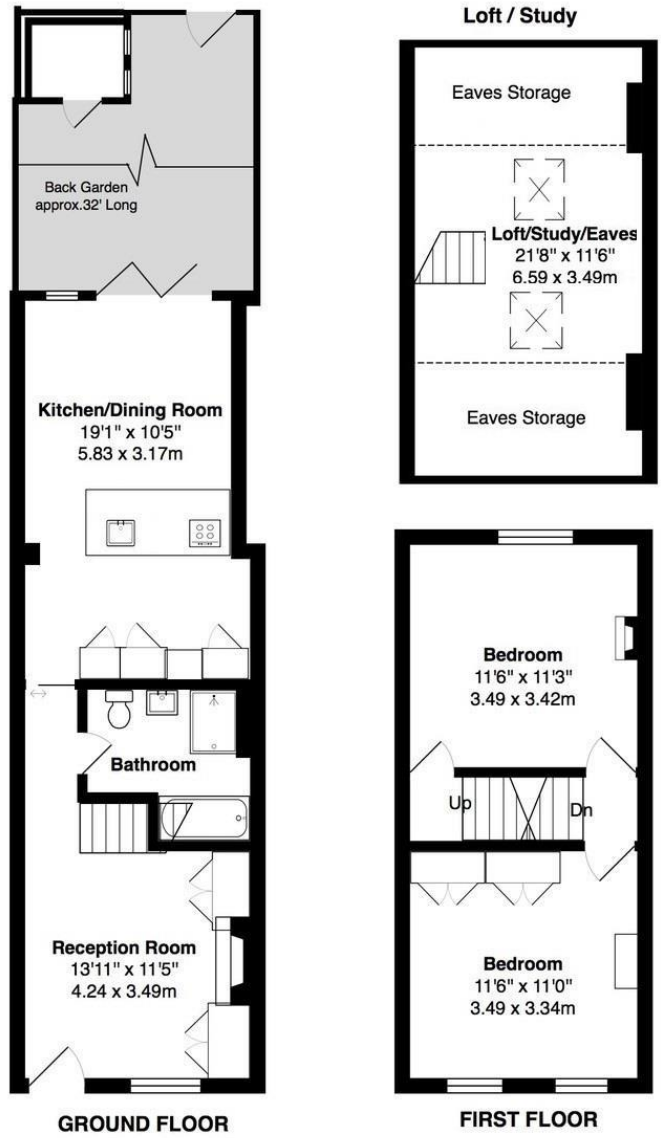
Extended at the rear and completely refurbished to an impressive standard by the current owners to offer 969 sq ft of stylish contemporary living space over 3 floors (including the loft room). Immaculately presented to retain charming period features with the addition of high specification fixtures, fittings and floorings, sash double glazed windows, underfloor heating downstairs, HEOS integrated sound system, and energy efficient appliances, boiler and lighting.

Front door opens into the living room with a wood burning stove, built in storage and access to the internal hallway with doors to the luxury family bathroom and the kitchen/dining room at the rear. This stunning room has a bespoke integrated kitchen, space for dining/seating and a fabulous vaulted ceiling. Folding doors open onto the low maintenance garden with shed storage and secure gated pedestrian access at the rear. On the first floor are 2 double bedrooms the front with built in wardrobes and the rear with access to a fixed ladder leading up to the converted loft room. This spacious room has velux roof windows and eaves storage and is ideal for use as a study/hobby room or occasional bedroom.

Situated only 0.1 mile from St Mary's & St Peter's Primary, 0.7 miles from Stanley Primary and 0.9 miles from Teddington footbridge across the Thames to the Lock, Ham Lands and towpath walks towards Richmond and Hampton Court Palace. EPC Rating D

- Mid Terrace Victorian Home
- 2 Double Bedrooms and Loft Room
- Extended and Fully Refurbished
- High Specification Throughout
- Stunning Kitchen/Dining Room and Separate Living Room
- Popular Teddington Cul-de-Sac Location
- 0.4 Miles from Teddington Train Station





TOTAL FLOOR AREA approx 969 Sq.Feet (90 sq.metres)

FLOOR AREA approx 721 Sq.Feet (67 sq.metres)

Loft/Study & eaves storage approx 248 sq.feet

**a** Websters Estate Agents 36 Broad Street, Teddington, Middlesex TW11 8QY

**t** 020 8614 6000

**e** sales@mywebsters.co.uk **w** mywebsters.co.uk

**Disclaimer**

These particulars, whilst believed to be accurate are set out as a general outline only for guidance and do not constitute any part of an offer or contract. Intending purchasers should not rely on them as statements of representation of fact, but must satisfy themselves by inspection or otherwise as to their accuracy. We have not carried out a detailed survey nor tested the services, appliances and specific fittings. Room sizes should not be relied upon for carpets and furnishings. The measurements given are approximate. No person in this firm's employment has the authority to make or give any representation or warranty in respect of the property.

