



Websters  
estate agents



# 60 St Margarets Grove, Twickenham, TW1 1JG

Immaculate bay fronted Victorian house in a central St Margarets village location. Fully extended and refurbished throughout. This family home balances modern additions and decor with period features and offers 1300 sq ft of light and airy contemporary living space over 3 floors.

Entrance hallway leads to dual aspect reception room, downstairs w.c and the amazing kitchen/family/dining room at the rear of the property. Bi-fold doors open onto the lovely south facing garden.

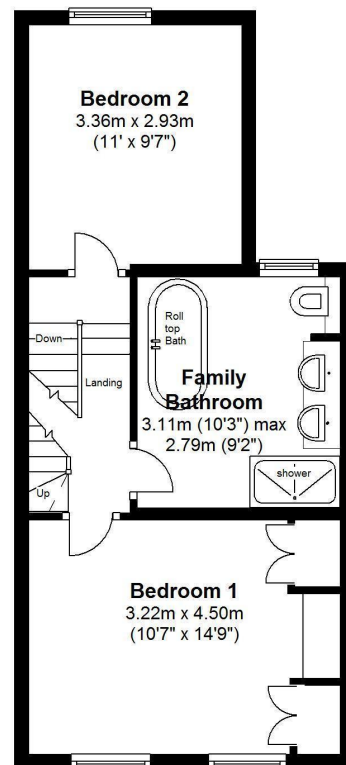
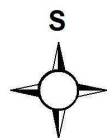
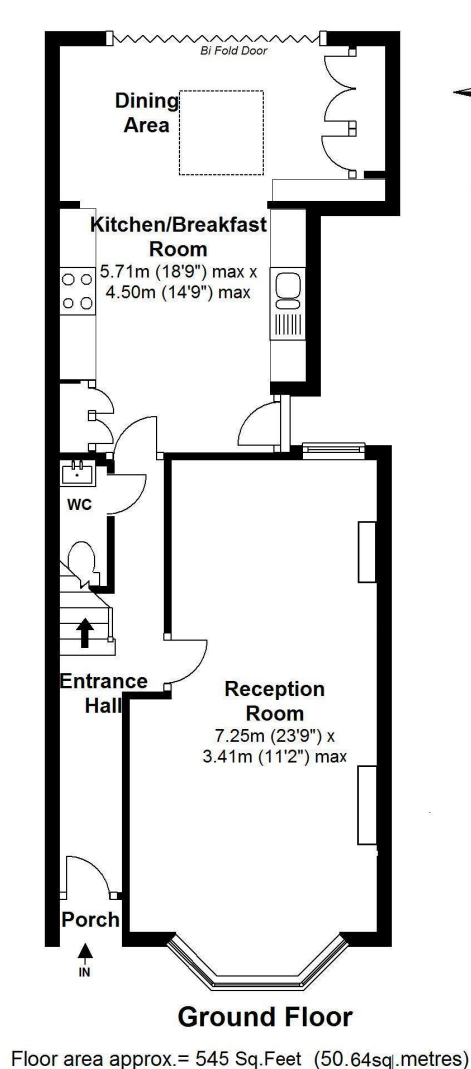
Upstairs are 2 double bedrooms and the luxury period style family bathroom. On the second floor are 2 further bedrooms, one with an ensuite shower room.

Situated only 300 yards from Moormead Park, St Margarets train station and village shopping area and just 1 mile from Richmond upon Thames. EPC rating D.

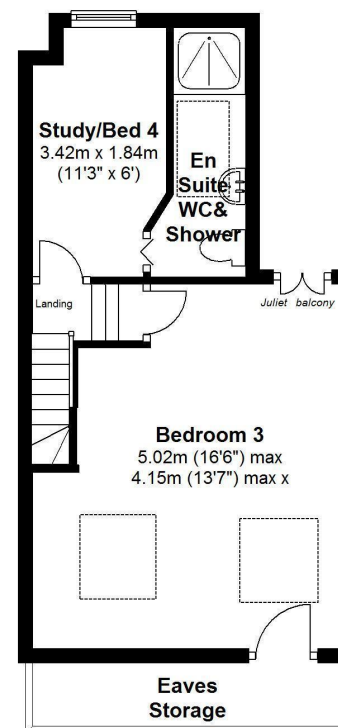
- End of Terrace Victorian House
- Immaculate Condition
- Separate Reception Room
- Contemporary Kitchen/Family/Dining Room
- 4 Bedrooms
- 2 Luxury Bathrooms
- 50ft South Facing Garden
- 0.3 Miles from St Margarets Village



St. Margaret's Grove



Floor area approx. = 423 Sq. Feet (39.30sq. metres)



Floor area approx. = 331 Sq. feet (30.73sq. metres)

Gross Floor area approx. = 1,300 Sq. Feet (121sq. metres)

**a** Websters Estate Agents 36 Broad Street, Teddington, Middlesex TW11 8QY

**t** 020 8614 6000

**e** sales@mywebsters.co.uk **w** mywebsters.co.uk

**Disclaimer**

These particulars, whilst believed to be accurate are set out as a general outline only for guidance and do not constitute any part of an offer or contract. Intending purchasers should not rely on them as statements of representation of fact, but must satisfy themselves by inspection or otherwise as to their accuracy. We have not carried out a detailed survey nor tested the services, appliances and specific fittings. Room sizes should not be relied upon for carpets and furnishings. The measurements given are approximate. No person in this firm's employment has the authority to make or give any representation or warranty in respect of the property.



