



Northfields

QUEENSWAY

W2

£1,625 per month

Bayswater





# QUEENSWAY , W2

## £1,625 per month



Reception Room



Kitchen



Bedroom



1 Bathroom



Set within this well maintained mansion block is this spacious studio apartment. Located on the second floor (with lift) and with a resident porter this apartment will make a great accommodation for a single professional or couple. The high ceilings and large windows makes the apartment feel larger than average and also has a neatly appointed separate kitchen and ample storage. Only moments away from the hustle and bustle of Queensway giving you access to many restaurants, pubs, bars and also Whiteleys Shopping Centre. Hyde Park is nearby for those sunny days and local tube stations such as Bayswater (Circle and District Line) and Queensway (Central line) are only seconds away.

EPC RATING: D

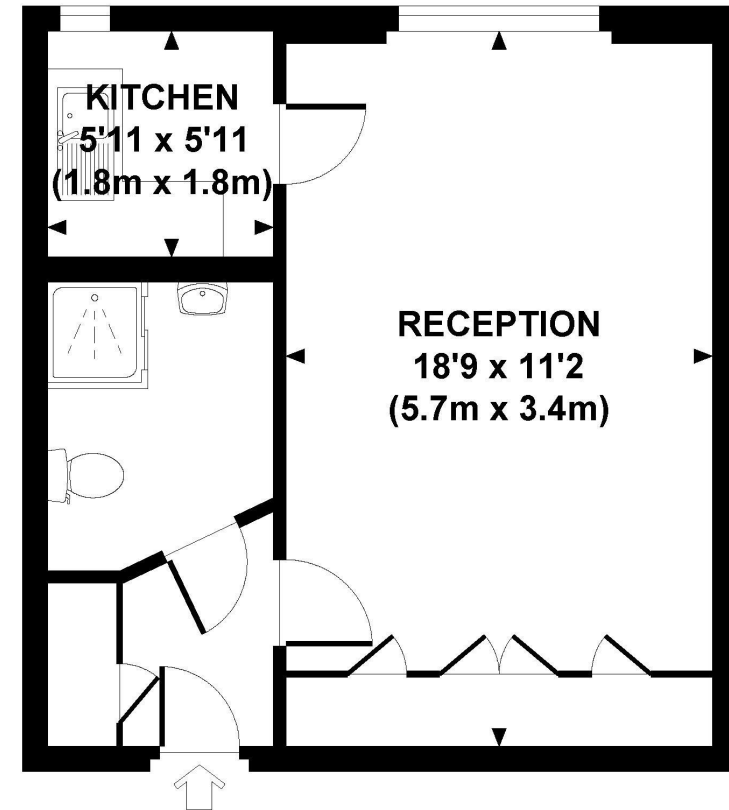
LOCAL AUTHORITY: City of Westminster

To move into this property you will need to pay rent in advance (usually monthly in advance) as well as a deposit of 5 weeks rent (or have a Zero Deposit policy in place if applicable.) Details of permitted payments and default fees can be found in our Tenant Guide and Tenancy Agreement.

Most tenancies are Assured Shorthold Tenancies. If you are not renting this property under an Assured Shorthold Tenancy or licence agreement then you will also have to pay the following prior to the commencement of a tenancy: Administration fee (£300 inclusive of VAT); Referencing fee (£75 per tenant/guarantor); Inventory check (prices vary depending on size and furnishing of the property.)

Please note, the rent advertised is pure rent and does not include any additional services such as council tax, water rates or utilities.

**PRINCESS COURT**  
Approximate Gross Internal Area 325 sq ft / 30.2 sq m



**SECOND FLOOR**  
**GROSS INTERNAL**  
**FLOOR AREA 325 SQ FT**

Although every attempt has been made to ensure accuracy, all measurements are approximate. The floor plan's for illustrative purposes only and not to scale. Measured in accordance to RICS standards. DE-PHOTOGRAPHY.NET

Your local independent,  
award winning estate agents



## Shepherds Bush

127 Askew Road,  
Shepherds Bush W12 9AU  
Lettings: 020 8740 8833  
E: enquiries@northfields.co.uk

020 8740 8833

[www.northfields.co.uk](http://www.northfields.co.uk)

CONTACT

Us today

TO FIND OUT

MORE



Northfields

QUEENSWAY  
W2

£1,625 per week

Bayswater





# QUEENSWAY , W2

£1,625 per week



Reception Room



Kitchen



Bedroom



1 Bathroom



Set within this well maintained mansion block is this spacious studio apartment. Located on the second floor (with lift) and with a resident porter this apartment will make a great accommodation for a single professional or couple. The high ceilings and large windows makes the apartment feel larger than average and also has a neatly appointed separate kitchen and ample storage. Only moments away from the hustle and bustle of Queensway giving you access to many restaurants, pubs, bars and also Whiteleys Shopping Centre. Hyde Park is nearby for those sunny days and local tube stations such as Bayswater (Circle and District Line) and Queensway (Central line) are only seconds away.

EPC RATING: D

LOCAL AUTHORITY: City of Westminster

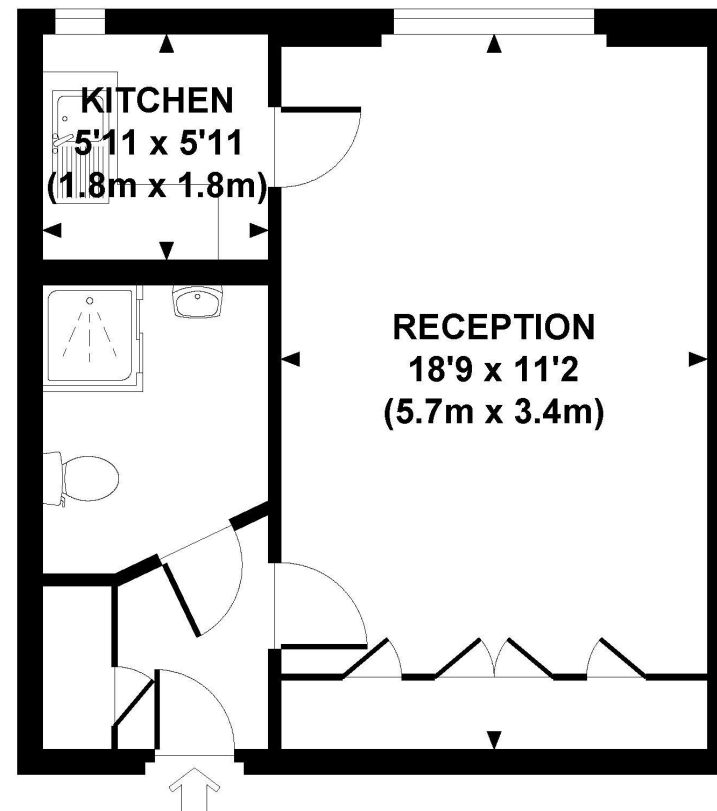
To move into this property you will need to pay rent in advance (usually monthly in advance) as well as a deposit of 5 weeks rent (or have a Zero Deposit policy in place if applicable.) Details of permitted payments and default fees can be found in our Tenant Guide and Tenancy Agreement.

Most tenancies are Assured Shorthold Tenancies. If you are not renting this property under an Assured Shorthold Tenancy or licence agreement then you will also have to pay the following prior to the commencement of a tenancy: Administration fee (£300 inclusive of VAT); Referencing fee (£75 per tenant/guarantor); Inventory check (prices vary depending on size and furnishing of the property.)

Please note, the rent advertised is pure rent and does not include any additional services such as council tax, water rates or utilities.

## PRINCESS COURT

Approximate Gross Internal Area 325 sq ft / 30.2 sq m



**SECOND FLOOR**  
**GROSS INTERNAL**  
**FLOOR AREA 325 SQ FT**

Although every attempt has been made to ensure accuracy, all measurements are approximate. The floor plan's for illustrative purposes only and not to scale. Measured in accordance to RICS standards. DE-PHOTOGRAPHY.NET



Your local independent,  
award winning estate agents



## Shepherds Bush

127 Askew Road,  
Shepherds Bush W12 9AU  
Lettings: 020 8740 8833  
E: enquiries@northfields.co.uk

020 8740 8833

[www.northfields.co.uk](http://www.northfields.co.uk)

CONTACT

Us today

TO FIND OUT

MORE