



Websters
estate agents

Laurel Road, Hampton Hill, TW12 1JH

Mid Terrace 3 bedroom home in a popular, quiet residential location with a west facing garden. Situated just 0.1 mile from direct access to Bushy Park, 0.2 miles from Hampton Hill High Street and 0.6 miles from Teddington town centre.

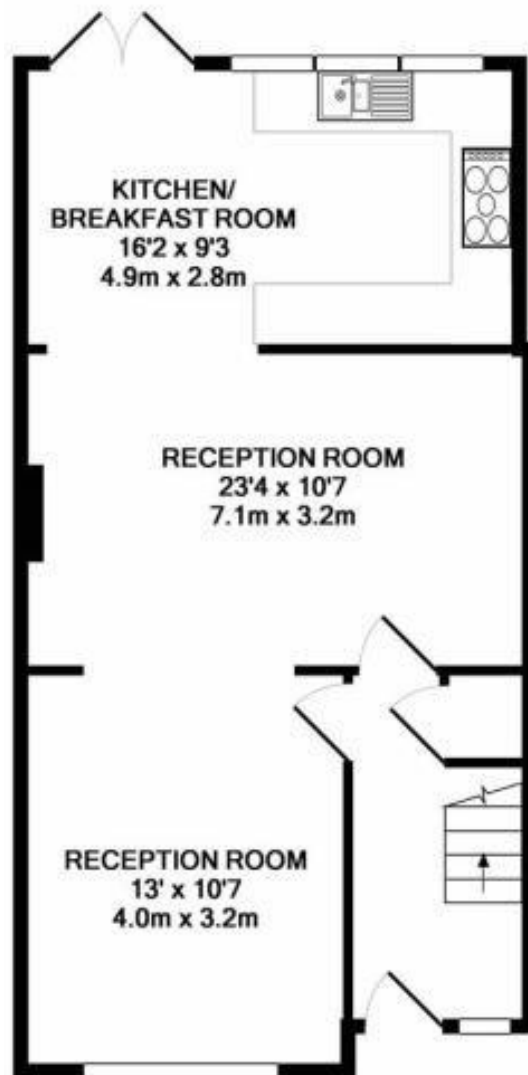
Extended at the rear to offer 884 sq ft of well balanced living space over 2 floors with modern fixtures, fittings and floorings, double glazed windows and doors, a recently replaced main roof, neutral decor and potential to loft convert (subject to Planning Permission and Building Regulations).

Entrance hallway leads to the open plan living room with wood flooring, a wood burning stove and space for seating and dining. Glass doors open to the light filled kitchen with stylish fitted units and integrated appliances. Patio doors open onto the garden with a sundeck and steps down to the lawn with mature planting, shed storage and gated rear access. On the first floor are 3 bedrooms, the family bathroom and hatch access to loft storage.

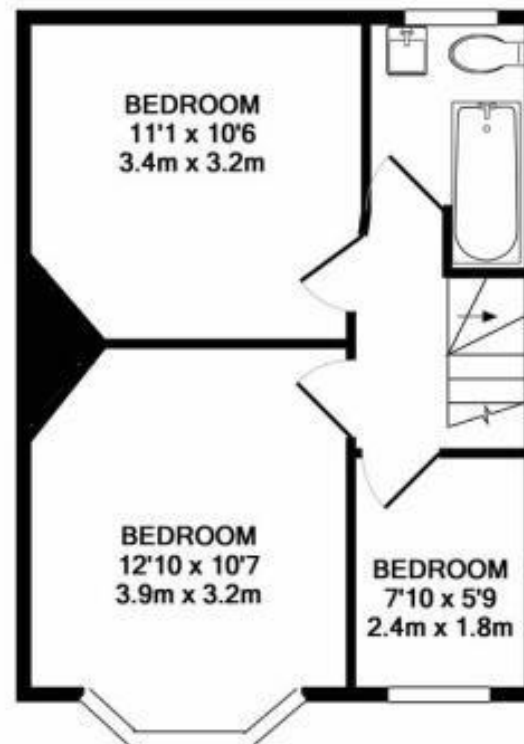
Located 0.5 miles from Hampton Hill Junior and Turing Secondary Schools, 0.7 miles from Stanley Primary, St Mary's & St Peters Primary and Fulwell train station and within 0.9 miles of Waldegrave Girls School/Sixth Form.
EPC Rating D

- Mid Terrace 3 Bedroom Home
- Popular Residential Location
- Fabulous West Facing Garden
- Potential to Loft Convert (stpp)
- Tastefully Presented Throughout
- 0.1 Mile from Gate Access to Bushy Park
- 0.2 Miles from Hampton Hill High Street





GROUND FLOOR
APPROX. FLOOR
AREA 523 SQ.FT.
(48.6 SQ.M.)



1ST FLOOR
APPROX. FLOOR
AREA 361 SQ.FT.
(33.5 SQ.M.)



TOTAL APPROX. FLOOR AREA 884 SQ.FT. (82.2 SQ.M.)

[a](#) Websters Estate Agents 36 Broad Street, Teddington, Middlesex TW11 8QY [t](#) 020 8614 6000 [e](#) sales@mywebsters.co.uk [w mywebsters.co.uk](http://mywebsters.co.uk)

Disclaimer

These particulars, whilst believed to be accurate are set out as a general outline only for guidance and do not constitute any part of an offer or contract. Intending purchasers should not rely on them as statements of representation of fact, but must satisfy themselves by inspection or otherwise as to their accuracy. We have not carried out a detailed survey nor tested the services, appliances and specific fittings. Room sizes should not be relied upon for carpets and furnishings. The measurements given are approximate. No person in this firm's employment has the authority to make or give any representation or warranty in respect of the property.

