



Websters  
estate agents



# Lion Road, Twickenham, TW1 4JF

Mid Terrace larger than average 2 double bedroom Victorian home with a private west facing garden. Situated in a popular residential location just 0.2 miles from Twickenham Green, town centre shops, cafes and restaurants and just 0.6 miles from Twickenham mainline train station.

Immaculately presented to offer 902 sq ft of living space over 2 floor with high specification fixtures, fittings and floorings, double glazed windows and doors, neutral decor throughout and potential to add a single bedroom/study on the first floor (subject to Planning Permission and Building Regulations)

Front door opens into the spacious living/family room with a generous lounge area, space for a large dining table, a dedicated study/work area and access to stunning kitchen/breakfast room. This light filled room has a stylish well appointed kitchen with integrated appliances, plenty of storage and space for a breakfast table. Double doors open onto the west facing garden with a patio, lawn and shed storage. On the first floor are 2 large double bedrooms, the family bathroom and hatch access to loft storage.

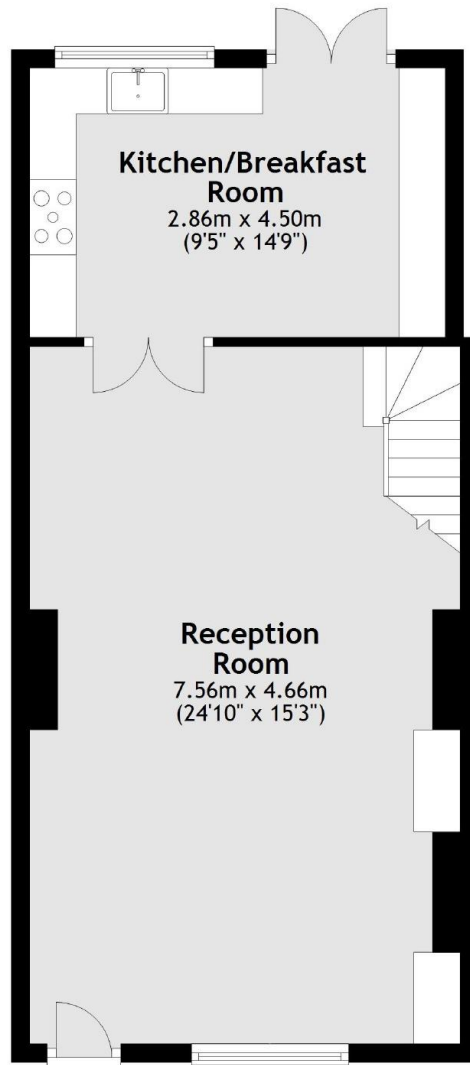
Located 0.6 miles from Strawberry Hill village and station, Church Street shops, restaurants and Twickenham Riverside with a towpath walk past Marble Hill Park to Richmond upon Thames.

EPC Rating C

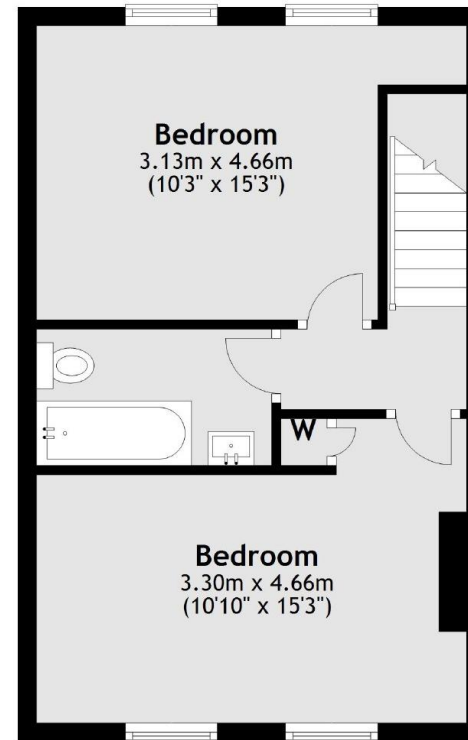
- Mid Terrace Victorian Home
- 2 Double Bedrooms and Upstairs Bathroom
- Living/Dining Room and Separate Kitchen/Breakfast Room
- 902 Sq Ft of Living Space over 2 Floors
- Immaculately Presented Throughout
- 0.2 Miles from Twickenham Green
- 0.6 Miles from Twickenham Station



## Ground Floor



## First Floor



Total area: approx. 83.8 sq. metres (902.4 sq. feet)

[a](#) Websters Estate Agents 36 Broad Street, Teddington, Middlesex TW11 8QY [t](#) 020 8614 6000 [e](#) sales@mywebsters.co.uk [w](#) mywebsters.co.uk

### Disclaimer

These particulars, whilst believed to be accurate are set out as a general outline only for guidance and do not constitute any part of an offer or contract. Intending purchasers should not rely on them as statements of representation of fact, but must satisfy themselves by inspection or otherwise as to their accuracy. We have not carried out a detailed survey nor tested the services, appliances and specific fittings. Room sizes should not be relied upon for carpets and furnishings. The measurements given are approximate. No person in this firm's employment has the authority to make or give any representation or warranty in respect of the property.



