



Websters
estate agents

Hamilton Road, Twickenham, TW2 6SN

Attractive Victorian 2 double bedroom cottage in a quiet cul-de-sac location only 0.2 miles from Twickenham Green, local shops, bars and restaurants.

Immaculately presented throughout, this delightful cottage has charming period features, fireplaces and flooring and offers 801 sq ft of welcoming living space, with light and neutral decor over 2 floors. Potential to extend to the side/rear on the ground floor (subject to planning permission and building regulations).

Entrance hallway leads to the living room at the front and the dining room at the rear of the property. A door opens into the kitchen which has been extended and provides high specification units with integrated appliances and a stone tiled floor. Double doors open directly onto the courtyard garden. Upstairs are 2 double bedrooms and the luxury period style family bathroom.

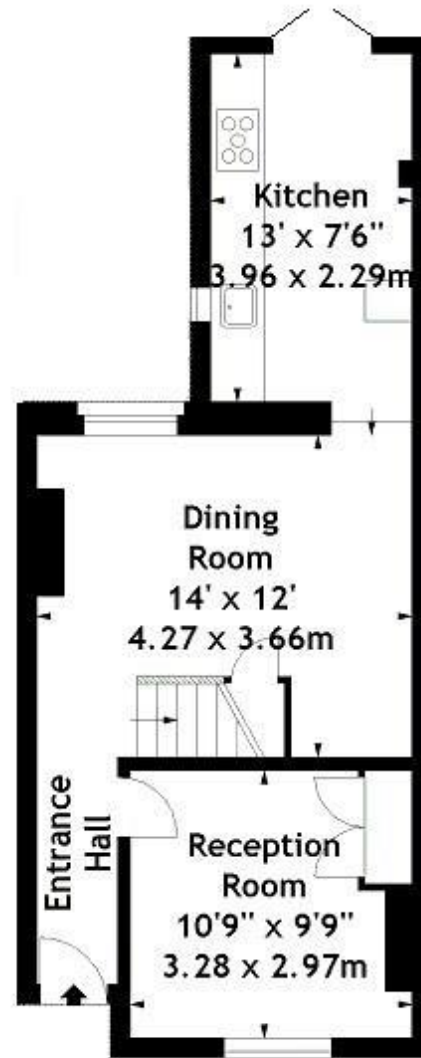
With unrestricted road parking and located only 0.7 miles from Strawberry Hill and Twickenham train stations.

EPC Rating C

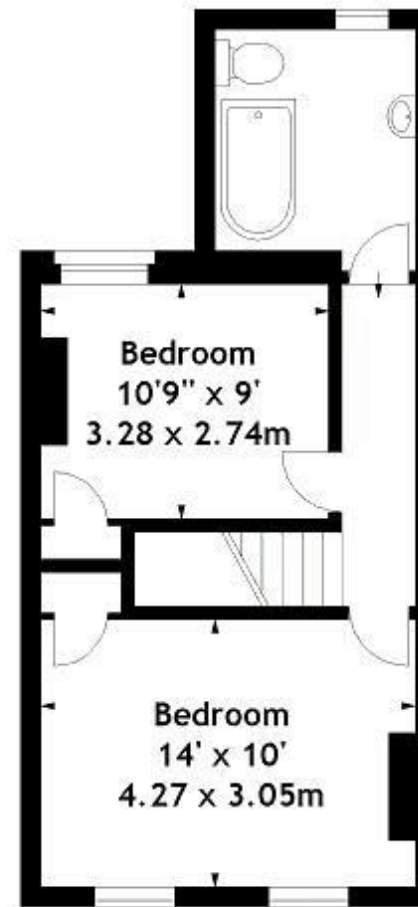
- Victorian Bay Fronted Cottage
- 2 Double Bedrooms
- Twickenham Green Location
- Upstairs Luxury Family Bathroom
- Charming Period Features
- Rear Courtyard Garden
- 0.7 Miles from Strawberry Hill and Twickenham Station



Hamilton Road, TW2
Approx. Gross Internal Area
801 Sq Ft - 74.41 Sq M



Ground Floor



First Floor

[a](#) Websters Estate Agents 164 Heath Road, Twickenham, Middlesex TW1 4BN [t](#) 020 8892 3343 [e](#) info@mywebsters.co.uk [w](#) mywebsters.co.uk

Disclaimer

These particulars, whilst believed to be accurate are set out as a general outline only for guidance and do not constitute any part of an offer or contract. Intending purchasers should not rely on them as statements of representation of fact, but must satisfy themselves by inspection or otherwise as to their accuracy. We have not carried out a detailed survey nor tested the services, appliances and specific fittings. Room sizes should not be relied upon for carpets and furnishings. The measurements given are approximate. No person in this firm's employment has the authority to make or give any representation or warranty in respect of the property.

