



Websters
estate agents
020 8892 3343 For Sale
mywebsters.co.uk

Websters
estate agents

Churchview Road, Twickenham, TW2 5BX

Investment Opportunity.

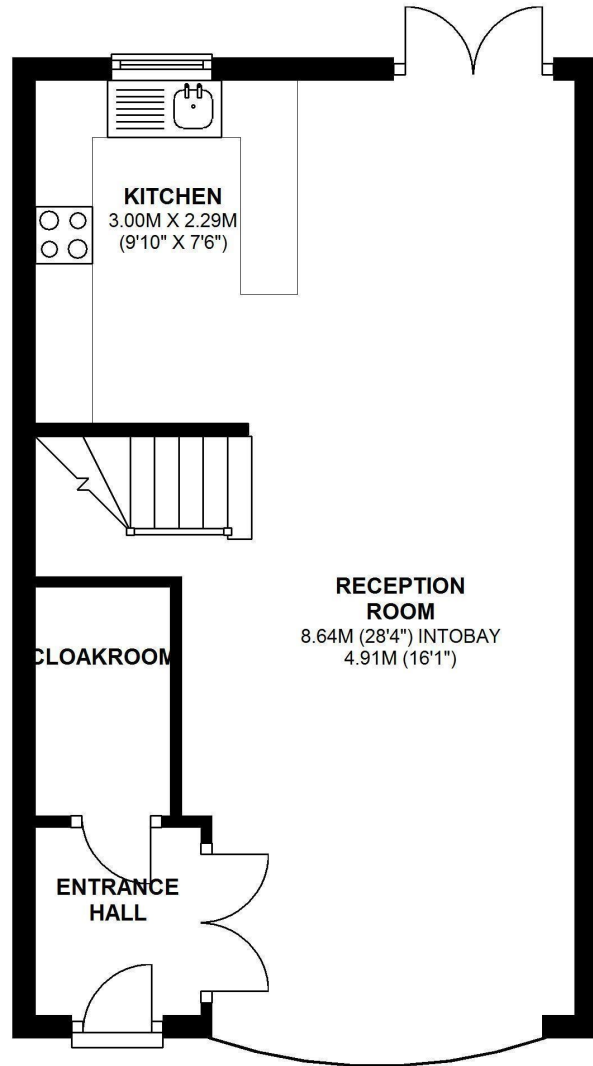
A very well kept, 3 double bedroom modern Neo Georgian style family home conveniently located 200 yards from Twickenham Green.

The ground floor has a light and spacious 28 ft through lounge, open plan dining and kitchen area opening onto a patio and west facing courtyard garden. There are 3 double bedrooms and a white modern bathroom suite upstairs.

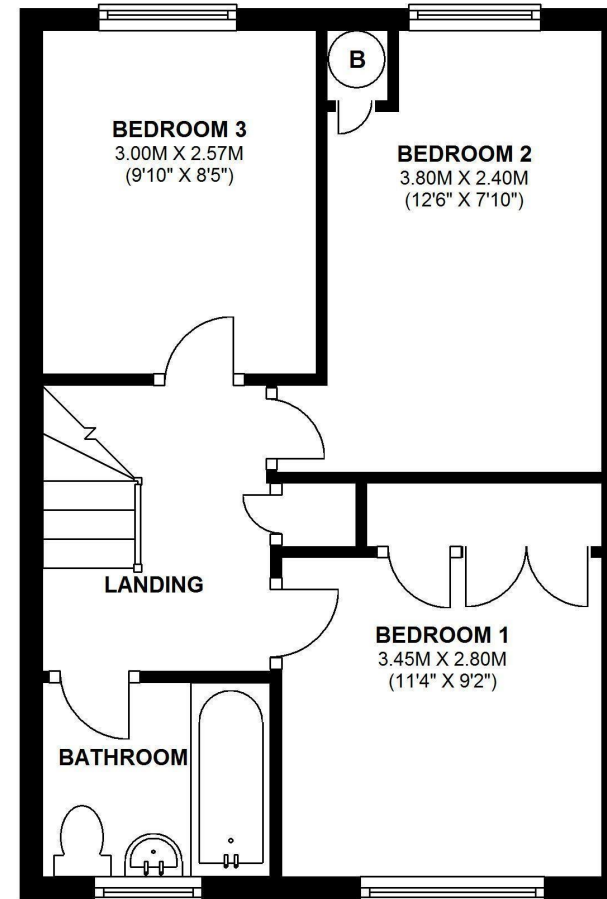
Outside, the house is sold with a single garage in an adjacent block. The current tenants have a 12 month (AST) assured short hold tenancy with a 6 month break clause, signed in Feb 2013.

- Investment Opportunity
- Neo Georgian Family Home
- 3 Double Bedrooms
- 28ft Through Lounge
- Open Plan Kitchen/Dining Area
- Upstairs White Modern Bathroom Suite
- Gas Heating & Double Glazing
- 200 Yards from Twickenham Green





GROUND FLOOR APPROX.41.05SQ.METRES (442 SQ FEET)



FIRST FLOOR APPROX.39.65SQ METRES(427 SQ.FEET)

a Websters Estate Agents 36 Broad Street, Teddington, Middlesex TW11 8QY

t 020 8614 6000

e sales@mywebsters.co.uk **w** mywebsters.co.uk

Disclaimer

These particulars, whilst believed to be accurate are set out as a general outline only for guidance and do not constitute any part of an offer or contract. Intending purchasers should not rely on them as statements of representation of fact, but must satisfy themselves by inspection or otherwise as to their accuracy. We have not carried out a detailed survey nor tested the services, appliances and specific fittings. Room sizes should not be relied upon for carpets and furnishings. The measurements given are approximate. No person in this firm's employment has the authority to make or give any representation or warranty in respect of the property.

