



Websters
estate agents

Mon-Fri
8.30am-6.30pm
P Permit
holders
only

91

839

Alfred Road, Kingston upon Thames, KT1 2TZ

Detached 3 bedroom family home in a popular residential area with no onward chain. Situated just 0.3 miles from local shops, St John's and King Athelstan Primary Schools and 0.6 miles from Hollyfield and Surbiton High Schools.

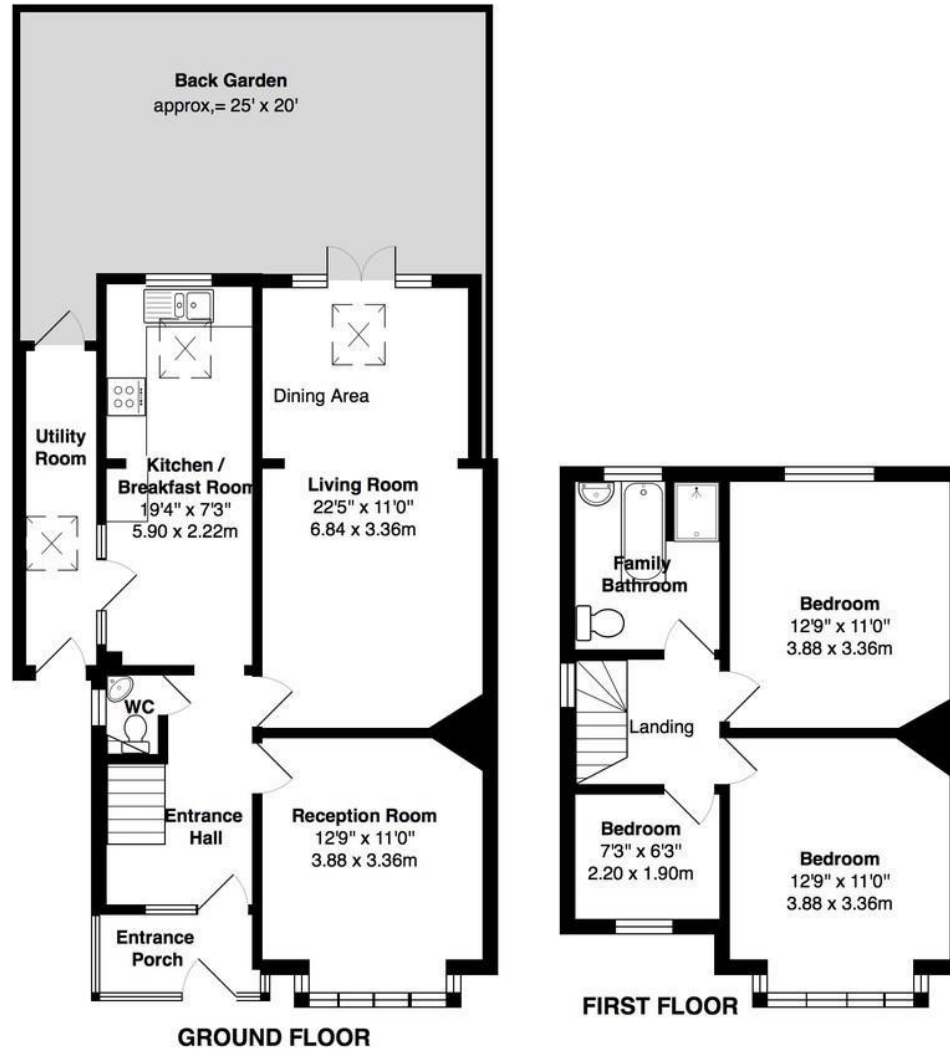
Extended at the rear and side to offer 1163 sq ft of well presented living space over 2 floors with modern fixtures and fittings, double glazed windows and doors and potential to loft convert and reconfigure the layout (subject to Planning Permission and Building Regulations).

Front porch opens into the entrance hallway with doors to the bay fronted living room, a w.c, the fitted kitchen with a separate utility area and the dining/family room. A door opens onto the low maintenance garden with shed storage. On the first floor are 3 bedrooms, the family bathroom and access to loft storage.

Located 0.7 miles from Kingston town centre shops, restaurants and leisure facilities and just 0.9 miles from Kingston train station and Surbiton town centre and train station.
EPC Rating D

- Detached 3 Bedroom Home
- No Onward Chain
- Potential to Loft Convert (stpp)
- Desirable Residential Location
- Currently 1163 Sq Ft of Living Space over 2 Floors
- Less Than 0.6 Miles From Popular Schools
- 0.7 Miles from Kingston Town Centre





TOTAL FLOOR AREA approx. = 1,163 Sq. Feet (108 sq metres)

a Websters Estate Agents 36 Broad Street, Teddington, Middlesex TW11 8QY t 020 8614 6000 e sales@mywebsters.co.uk w mywebsters.co.uk

Disclaimer
These particulars, whilst believed to be accurate are set out as a general outline only for guidance and do not constitute any part of an offer or contract. Intending purchasers should not rely on them as statements of representation of fact, but must satisfy themselves by inspection or otherwise as to their accuracy. We have not carried out a detailed survey nor tested the services, appliances and specific fittings. Room sizes should not be relied upon for carpets and furnishings. The measurements given are approximate. No person in this firm's employment has the authority to make or give any representation or warranty in respect of the property.

