



CONWAY CRESCENT
UB6

£490,000

Perivale



Conway Crescent Ealing

Approximate Gross Internal Area
868 sq ft / 80.6 sq m

CONWAY CRESCENT, UB6

£490,000



Two Reception Room



Kitchen



Three Bedrooms



Bathroom

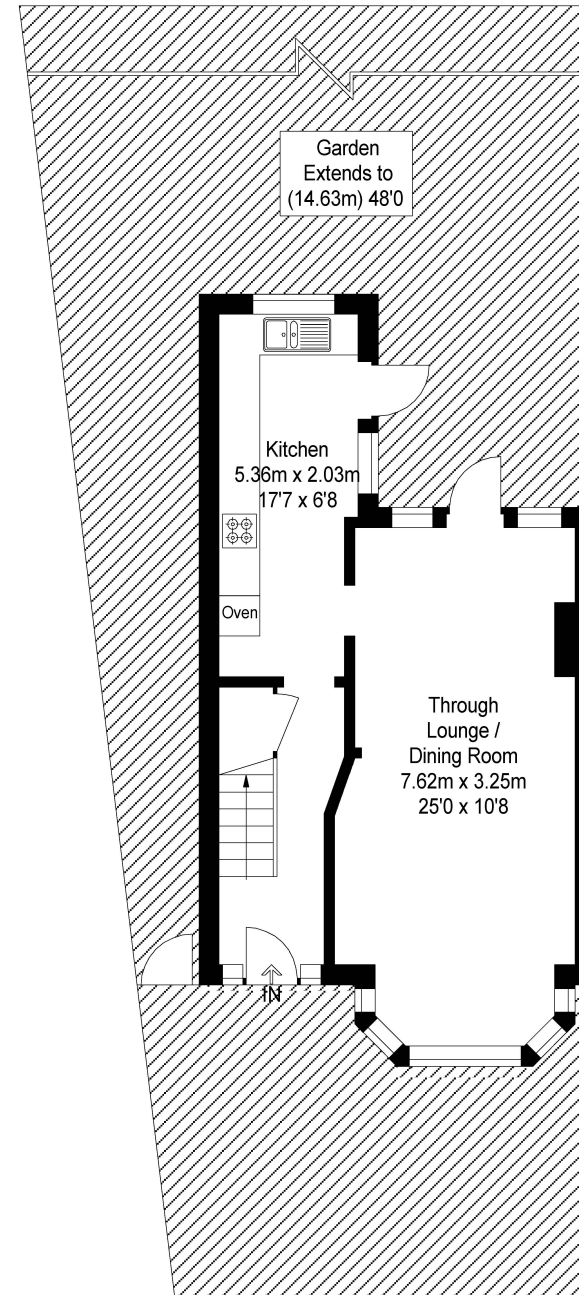


On Street Parking

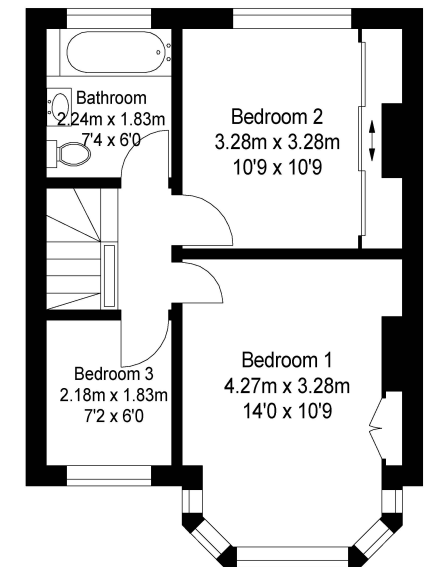
A lovely three bedroom semi-detached house, located in the popular Medway village. The property offers good space for entertaining, with a through 25ft lounge opening to a modern 17ft extended kitchen. Situated within easy Perivale underground station and local amenities.

The property also falls in the catchment area for the outstanding Selborne Primary school

EPC RATING: D
LOCAL AUTHORITY: Ealing
COUNCIL TAX BAND: D



Ground Floor
472 sq ft / 43.8 sq m



First Floor
396 sq ft / 36.8 sq m

Cube Property Marketing © 2019
Illustration for identification purposes only,
measurements are approximate, not to scale.

Your local independent
award winning estate agents



Pitshanger

1 Albert Terrace
Ealing
London W5 1PL
Sales: 020 8998 3111
E: pittscales@northfields.co.uk

020 8998 3111

www.northfields.co.uk

MORE

TO FIND OUT

Us today

CONTACT