



Websters
estate agents
020 8892 3342
mywebsters.co.uk
For Sale

Websters
estate agents

Bramley Close, Twickenham, TW2 7EU

Ground Floor 2 bedroom Maisonette with a garage, driveway parking and a private garden. Situated in a quiet residential area just 0.3 miles from Whitton town centre shops, cafes and restaurants and 0.4 miles from Whitton mainline train station.

With no onward chain and offering 528 sq ft of well balanced living space with double glazed windows, storage cupboards, secure gated access to the front door and the driveway and potential to update/modernise to create a stunning home.

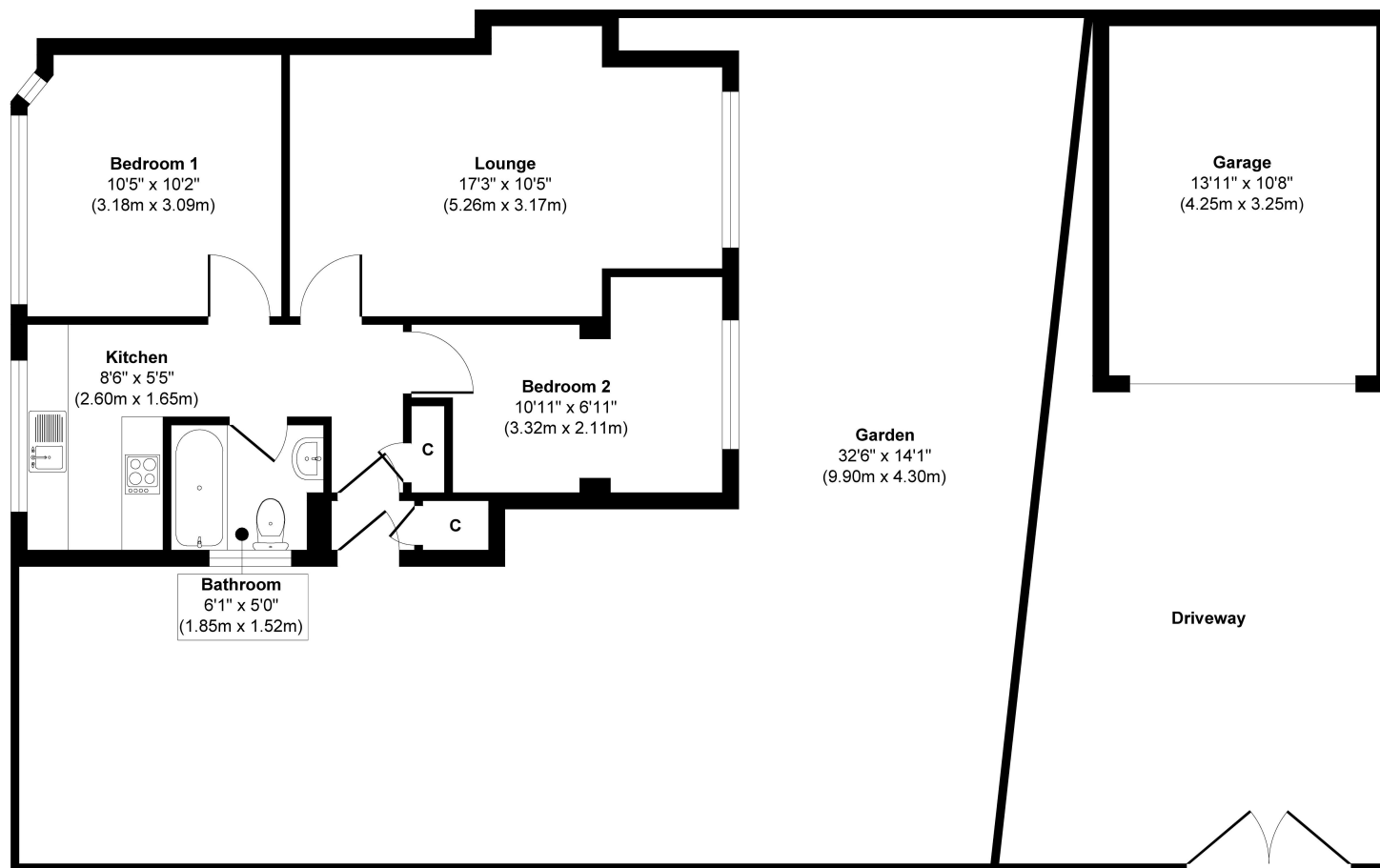
With shared courtyard access from the side of the property, the private front door opens into the hallway with access to the 2 bedrooms, the shower room, the living/dining room overlooking the garden and the separate fitted kitchen. Double gates at the side lead to the driveway, garage and mature rear garden.

Located 0.2 miles from Murray Park and less than 1 mile from the A316 with direct access to the M3/M25 and central London.

EPC Rating D

- Ground Floor 2 Bedroom Maisonette
- Driveway Parking Space and Garage
- Private Rear Garden
- No Onward Chain
- In Need of Updating
- Popular Residential Area
- 0.4 Miles from Whitton Train Station





Floor Plan
Approximate Floor Area
528 sq. ft
(49.13 sq. m)

Approx. Gross Internal Floor Area 528 sq. ft / 49.13 sq. m

a Websters Estate Agents 36 Broad Street, Teddington, Middlesex TW11 8QY

t 020 8614 6000

e sales@mywebsters.co.uk **w** mywebsters.co.uk

Disclaimer

These particulars, whilst believed to be accurate are set out as a general outline only for guidance and do not constitute any part of an offer or contract. Intending purchasers should not rely on them as statements of representation of fact, but must satisfy themselves by inspection or otherwise as to their accuracy. We have not carried out a detailed survey nor tested the services, appliances and specific fittings. Room sizes should not be relied upon for carpets and furnishings. The measurements given are approximate. No person in this firm's employment has the authority to make or give any representation or warranty in respect of the property.

