



LC72 NXT

Websters
estate agents

Gloucester Road, Twickenham, TW2 6NF

Mid Terrace 4 bedroom home with driveway parking and a 90ft west facing garden in a popular residential location. Situated 0.3 miles from Crane Park , 0.7 miles from Twickenham Green and within 0.8 miles of Trafalgar, Archdeacon, St James Primary and Waldegrave Girls/Co-ed Sixth Form.

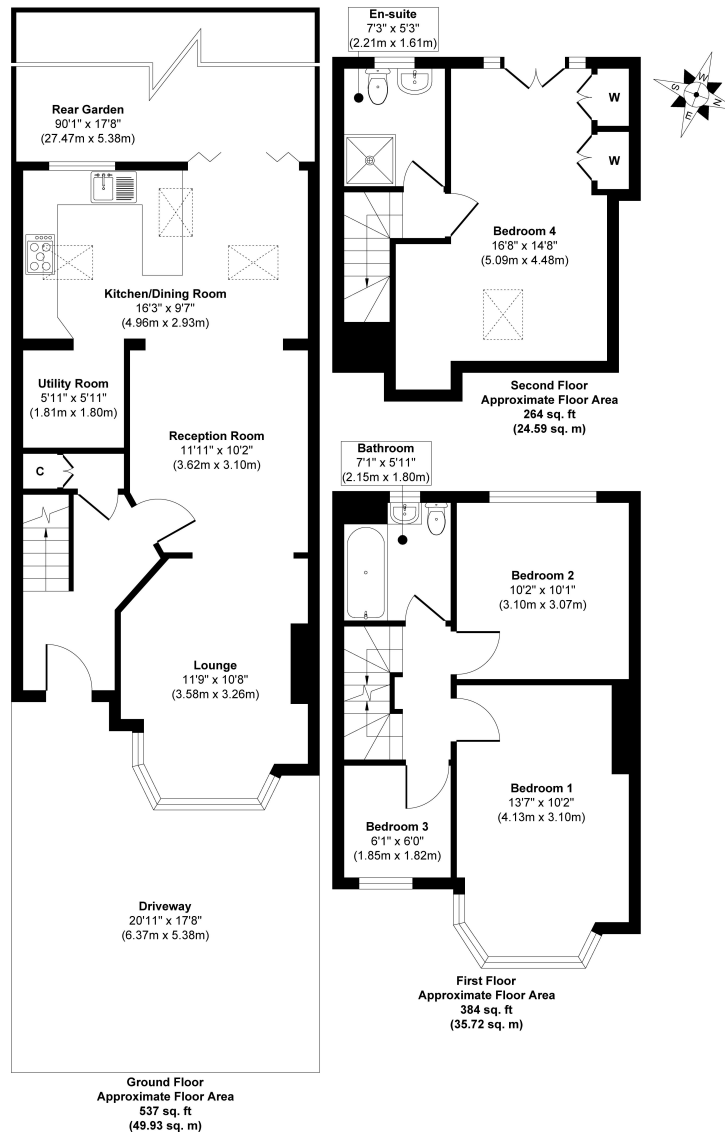
Extended and loft converted to offer 1185 sq ft of well balanced living space over 3 floors with modern fixtures, fittings and floorings, double glazed windows and doors and potential to update/further extend/re-configure the layout (subject to Plannong Permission and Building Regulations)

Entrance hallway leads to the open plan living/dining room with access to the kitchen/breakfast room with fitted units, space for dining and a separate utility room. Doors open onto the mature garden with a patio, lawn, shed storage and gated rear access. On the first floor are 3 bedroom and the family bathroom. Stairs lead up to the main bedroom with an en-suite shower room, built in storage and a juliet balcony overlooking the garden.

Located 0.5 miles from Whitton Town Centre and mainline train station and just 0.3 miles from the A316 with direct access to the M3/M25 and into central London.
EPC Rating D

- Mid Terrace 4 Bedroom Home
- 90 Ft West Facing Garden and Driveway Parking
- Extended and Loft Converted
- Popular Counties Estate Location
- 1185 Sq Ft of Living Space over 3 Floors
- Within 0.8 Miles of Popular Schools
- 0.5 Miles from Whitton Train Station





Disclaimer

These particulars, whilst believed to be accurate are set out as a general outline only for guidance and do not constitute any part of an offer or contract. Intending purchasers should not rely on them as statements of representation of fact, but must satisfy themselves by inspection or otherwise as to their accuracy. We have not carried out a detailed survey nor tested the services, appliances and specific fittings. Room sizes should not be relied upon for carpets and furnishings. The measurements given are approximate. No person in this firm's employment has the authority to make or give any representation or warranty in respect of the property.

