



Websters
estate agents

Andover Road, Twickenham, TW2 6PD

End of Terrace 3 bedroom Victorian home in a highly regarded residential location. Situated just 0.3 miles from Twickenham Green, local shops, cafes and restaurants and 0.7 miles from Strawberry Hill train station,

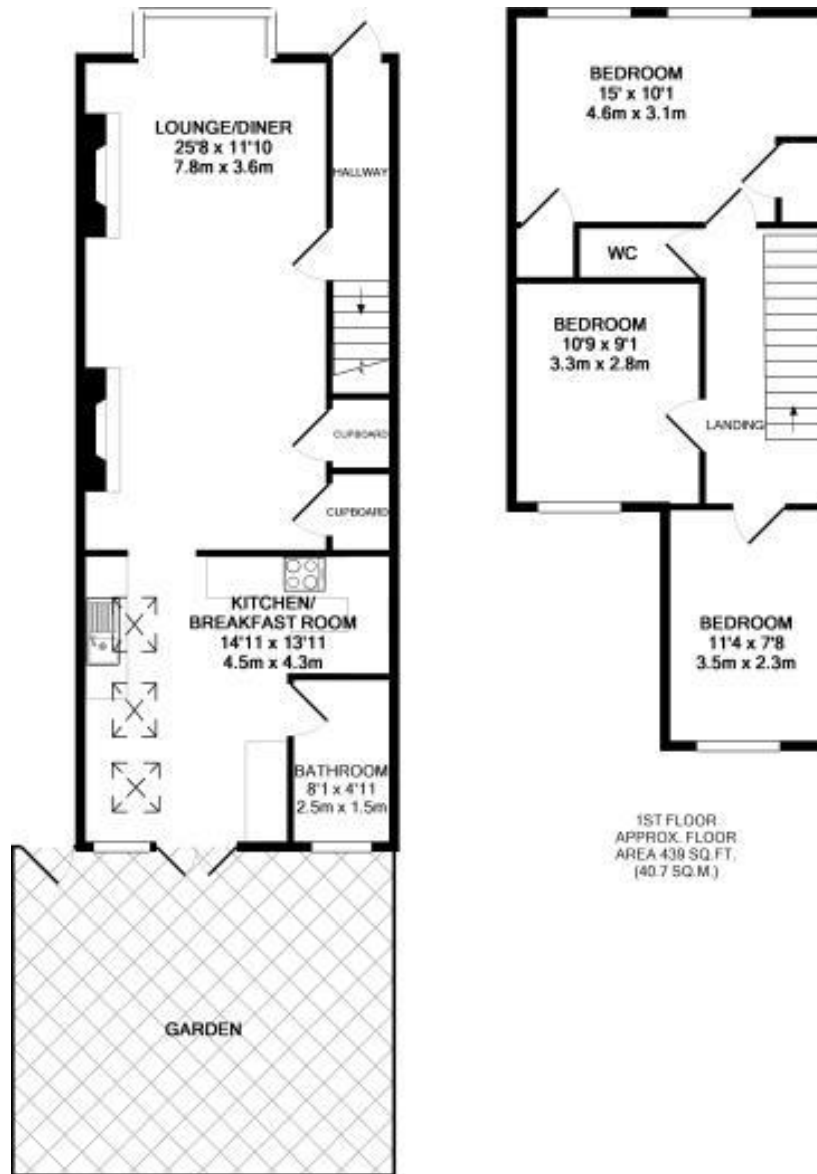
Extended at the rear to offer 1010 sq ft of well balanced living space over 2 floors with high specification fixtures, fittings and floorings, double glazed windows and doors and potential to loft convert (subject to Planning Permission and Building Regulations).

Entrance hallway leads to the bay fronted, open plan living/dining room with wood flooring, a feature fireplace, built in storage and access to the kitchen/breakfast room at the rear. This light filled room has velux roof windows, fitted units, space for dining/seating and a door to the family bathroom. Double doors open onto the garden with a patio, lawn, shed storage and gated side access. On the first floor are 3 bedrooms and hatch access to loft storage.

Located 0.4 miles from Archdeacon and Trafalgar Primary Schools, St Richard Reynolds and Waldegrave Girls/Co-ed Sixth Form.
EPC Rating D

- End of Terrace 3 Bedroom Home
- 1010 Sq Ft of Living Space over 2 Floors
- Potential to Loft Convert (stpp)
- Open Plan Living Room and Kitchen/Breakfast Room
- Immaculately Presented Throughout
- 0.3 Miles from Twickenham Green
- Within 0.4 Miles of Popular Schools





1ST FLOOR
APPROX. FLOOR
AREA 438 SQ. FT.
(40.7 SQ. M.)

GROUND FLOOR
APPROX. FLOOR
AREA 572 SQ. FT.
(53.1 SQ. M.)

TOTAL APPROX. FLOOR AREA 1010 SQ. FT. (93.9 SQ. M.)

a Websters Estate Agents 36 Broad Street, Teddington, Middlesex TW11 8QY t 020 8614 6000 e sales@mywebsters.co.uk w mywebsters.co.uk

Disclaimer

These particulars, whilst believed to be accurate are set out as a general outline only for guidance and do not constitute any part of an offer or contract. Intending purchasers should not rely on them as statements of representation of fact, but must satisfy themselves by inspection or otherwise as to their accuracy. We have not carried out a detailed survey nor tested the services, appliances and specific fittings. Room sizes should not be relied upon for carpets and furnishings. The measurements given are approximate. No person in this firm's employment has the authority to make or give any representation or warranty in respect of the property.

